



# EDG FIELDSCOPES/BINOCULARS

EDG Fieldscope 85/85-A/65/65-A

85 VR **NEW** /85-A VR **NEW**

EDG 7×42/8×42/10×42/8×32/10×32

# EDG

THE CUTTING EDGE IN SPORT OPTICS

Founded in 1917, Nikon has been making binoculars for more than 90 years, constantly pushing the envelope to come up with new and innovative technologies that enhance people's vision. The ED glass used in our NIKKOR lenses, for example, is celebrated by the world's top professional photographers for its exceptionally sharp, clear images. While the optics used in Nikon steppers — used to manufacture semiconductors — are able to resolve images with nanometric precision, making them some of the most exacting devices ever developed. Now we're taking that passion to new heights with our unprecedented lineup of extraordinary sport optics, Nikon EDG.

EDG redefines the way you view nature, with a striking extra dimension of edge-to-edge sharpness, superior colour fidelity, and much more. See whites in a different way — pure and untainted. Nikon's optical innovations — including our renowned ED (Extra-low Dispersion) glass, dielectric high-reflective multilayer prism coating, field-flattener lens system, advanced multilayer coating applied to all lens elements and prisms, phase-correction coating on the roof prism, and the VR (Vibration Reduction) system newly employed in Nikon's EDG Fieldsopes for measurably comfortable viewing — set the stage for an exhilarating new viewing experience. And it's all combined synergistically in a rugged, finely balanced body that's a pleasure to hold and use.

Discover for yourself the extraordinary benefits of Nikon EDG.

# A More Brilliant Natural World

**EDG FIELDSCOPES**  
85/85-A/65/65-A

**EDG VR FIELDSCOPES** NEW  
85 VR/85-A VR

The world's first Fieldsopes featuring Nikon's lens-shift type VR (Vibration Reduction) system\*1. VR reduces vibrations to approx. 1/8\*2 during observation, providing the equivalent of a shutter speed that's approx. 2 stops\*2 faster in digiscoping. This system maximises the EDG Fieldscope's performance, ensuring stress-free, comfortable vision.



**EDG BINOCULARS**  
7x42/8x42/10x42/8x32/10x32

\*1 As of October, 2011  
\*2 Based on Nikon Fieldscope measuring standard (used with tripod)



**Experience comfortable viewing with minimised blur achieved by Nikon's original VR (Vibration Reduction) system**

For the first time in the world, Nikon incorporates its lens-shift type VR (Vibration Reduction) system that is based on technologies developed for NIKKOR VR lenses into EDG Fieldscopes, to reduce image blur caused by vibrations and realise comfortable viewing. Even slight vibrations transmitted from a tripod can be reduced. This VR system opens the door to a new world of "vision with the highest tranquility".

**Stress-free observation realised by reducing vibrations to approx. 1/8\* with Nikon's VR (Vibration Reduction) system**

In pursuit of more stable vision, EDG Fieldscope 85 VR/85-A VR employs Nikon's VR system that utilises the basic mechanism developed in NIKKOR lenses and algorithms optimised for Fieldscopes. As a result, external vibrations caused by wind, operational vibrations during focusing, panning or tilting, all occurring while mounted on a tripod, are accurately compensated. While reducing vibrations during observation to approx. 1/8\*, it also provides the equivalent of a shutter speed approx. 2 stops\* faster in digiscoping. Annoying image blur that is likely to occur during observation and in digiscoping, especially in windy or other bad conditions, is greatly reduced.

\*Based on Nikon Fieldscope measuring standard (used with tripod)



\* Simulated images

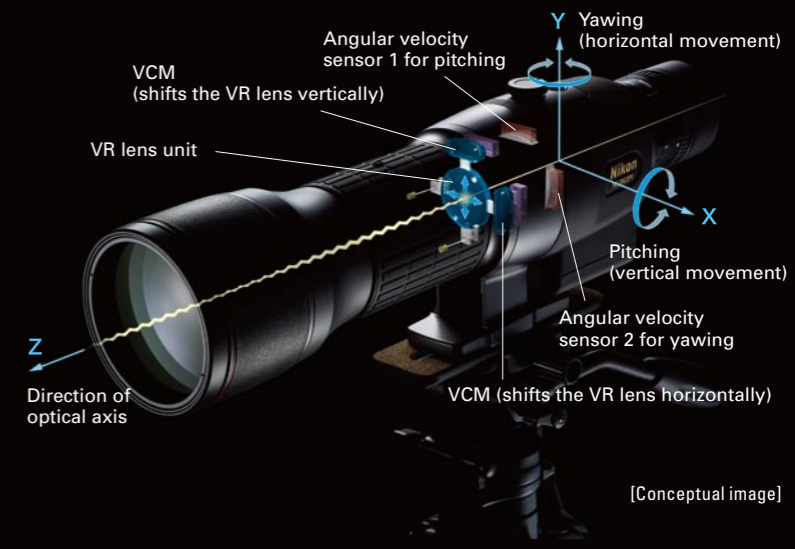
**Superior operability and reliability — easy-to-press VR button and VR lock knob for safe transportation**

After turning the VR lock knob, pressing the VR button once sets VR on. Easy operation is ensured without disturbing your observation. LED which lights up when VR is on can be confirmed from above or from the eyepiece side. The VR lock knob mechanically fixes the VR optical system for safe transportation.



**Precise sensing mechanism and control reduce vibrations — two vibration detection sensors and VCMs (Voice Coil Motor)**

Two vibration detection sensors detect pitching (vertical movement) and yawing (horizontal movement), then via high-speed calculation, the direction and size of vibration can be computed. Based on the results, two Voice Coil Motors command the vibration reduction optical system accurately and quickly to eliminate image blur caused by vibrations.



[Conceptual image]

**No hassle even if batteries are exhausted — readily available AA-size batteries**

The power source is readily available AA-size alkaline batteries. When AA-size alkaline batteries are used, approx. 17-hour drive is possible. Auto power off function automatically disables the VR system approx. 30 minutes after it is turned on to save battery power. Pressing the VR button during activation turns power OFF.



\*Battery life varies depending on conditions, temperature and vibration



EDG Fieldscope 85 VR

EDG Fieldscope 85-A VR



EDG Fieldscope 85 VR + FSA-L2 + Nikon Digital SLR Camera

## Capture images at any moment, the way you imagine them: a new realm of digiscoping beauty.

Besides observation, EDG Fieldscopes are designed for digiscoping, allowing smooth connections to a digital camera for spectacular telephoto pictures. The advanced optical system, well-balanced body, smooth focusing and newly added VR system that reduces image blur by providing the equivalent of shooting at a shutter speed up to approx. 2 stops\* faster — all these and more will let you capture beautiful moments of high precision and image quality. Uniquely Nikon, uniquely EDG.

### Advantages of Nikon's VR system

With VR operating, image blur caused by vibrations during observation is reduced to approx. 1/8\*, making composition easy. Also, this enhances focusing accuracy even when using manual focus during super-telephoto digiscoping. The system provides an effect equivalent to a shutter speed approx. 2 stops\* faster and is especially effective when digiscoping in bad conditions such as when a tripod is buffeted by wind.

\* Based on Nikon Fieldscope measuring standard (used with tripod)



EDG Fieldscope 85 VR + FSA-L2 + D7000



EDG Fieldscope 85 + FSA-L2 + D300S

Azahari Reyes @ Jason



EDG Fieldscope 85 VR + FSA-L2 + D7000



EDG Fieldscope 85 + FSA-L2 + D7000



**Fieldscope Digital SLR Camera Attachment FSA-L2**

**World's first 3.5x zoom\*<sup>1</sup>**  
**Super-telephoto shooting with a focal length of up to 1,750mm\*<sup>2</sup> is achieved**

Quickly and easily attaches directly to the F-mount of a Nikon digital SLR camera, for easy connection with your EDG Fieldscope. Multilayer coating is applied to all lens elements for brighter optics. The zoom function features an internal vari-magnification system, with magnification of 3.5x. When attached to EDG Fieldscope 85 series, the focal length ranges from 500mm to 1,750mm. As for the camera's exposure mode, in addition to Metered Manual, Aperture-Priority Auto Mode is available. Provides a natural synchronisation in exterior design when attached to a digital SLR camera and EDG Fieldscope.

\*1 Among Fieldscope digital SLR camera attachments. (as of July, 2009)  
 \*2 When attached to EDG Fieldscope 85 series.



At low magnification



At high magnification



\* Simulated images

**Comprehensively systematised digiscoping for optimum results**

Nikon's EDG digiscoping system consistently delivers superior performance for comfortable shooting, achieving quality results. It does this through Nikon's totally integrated design: the high-quality optical system, dependable body design, newly employed VR system for remarkable blur-reduction effects and smooth focusing. Everything needed for the best results is incorporated here.

**FSA-L2 Specifications**

Magnification	3.5x zoom	
Mount	Bayonet mount	
Exposure mode (camera setting)	A (Aperture-Priority Auto) / M (Metered Manual)	
Exposure metering (camera setting)	Centre-weighted metering	
Length x diameter	150mm x 62mm	
Weight	435g	
	With EDG Fieldscope 85 series	With EDG Fieldscope 65 series
Focal length	500 - 1,750mm (DX format: 750 - 2,625mm)	400 - 1,400mm (DX format: 600 - 2,100mm)
Aperture (focal length)	f/5.9 - 21 (500mm - 1,750mm)	f/6.2 - 22 (400mm - 1,400mm)

\* Camera's autofocus mode cannot be used. Perform focusing using the EDG Fieldscope focusing ring.  
 \* Camera's exposure meter activates even in Manual exposure mode.  
 \* When used with a Nikon DX-format digital SLR camera, the picture angle is equivalent to approx. 1.5x focal length of 35mm format.  
 \* The actual f-number and the focal length vary depending on the actual zoom setting, while the camera display and image data show the constant f-number (13) and focal length (800mm).  
 \* When used with a Nikon FX-format camera, vignetting occurs at focal lengths between 500mm and 750mm with EDG Fieldscope 85 series and between 400mm and 600mm with EDG Fieldscope 65 series.  
 \* Because the optical system characteristics differ from those of ordinary interchangeable lenses, the exposure level may vary depending on the camera model; use exposure compensation if necessary. Exposure compensation may be required when zoom is set at a wider position.

**Nikon Digiscoping System Chart for EDG Fieldscopes**



**\* Digital Camera Bracket FSB series**

The FSB series bracket is an adaptor that allows you to connect a wide selection of Nikon COOLPIX series compact digital cameras to EDG Fieldscopes, enabling you to enjoy digiscoping.

• The above chart is as of October 2011, updated information will be available at: [www.nikon.com/sportoptics/](http://www.nikon.com/sportoptics/)



EDG Fieldscope 85-A

EDG Fieldscope 65

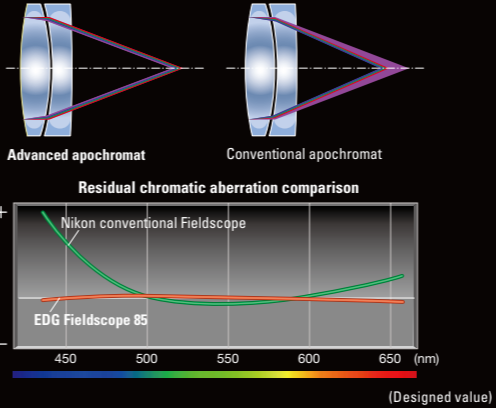
# Enjoy crystal-clear viewing courtesy of a rich mix of superior Nikon optical technologies

Now you can zero in on nature's most intimate moments, such as nestlings feeding from their mother's bill and countless other exciting revelations. Nikon EDG Fieldscopes bring together a rich diversity of sophisticated Nikon optical technologies to deliver images of edge-to-edge sharpness with outstanding colour fidelity. Discover a new depth in your nature observations with Nikon EDG Fieldscopes.



### Nikon's superior chromatic-aberration compensation system: ED glass elements with advanced apochromat

EDG Fieldscopes bring together Nikon's most sophisticated lens technologies with a precision optical design that gives you a sharper, more brilliant field of view. Our apochromat optical system, which uses ED (Extra-low Dispersion) glass, corrects violet chromatic aberration in addition to the conventional chromatic aberrations of red, blue and green. Because chromatic aberrations are corrected to the furthest limits of the visible light range, and colour fringing is effectively compensated, whites are clearer and sharper.



### Edge-to-edge sharpness: Field-flattener lens system

See everything as clearly in peripheral areas as at the centre. Nikon EDG Fieldscopes employ Nikon's long-recognised field-flattener lens system to give you consistent sharpness, compensated for field curvature, across the entire field of view. And our expert lens design minimises astigmatism and coma aberration to ensure that you enjoy sharp, clear vision.

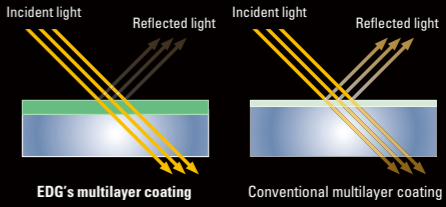


\* Simulated images

• Thanks to EDG Fieldscopes' high optical performance, they are also practical for recreational astronomical observations.

### Strikingly brighter, clearer views: Advanced multilayer coating

The sophisticated coating Nikon applies to EDG Fieldscopes goes far beyond conventional methods. Multilayer coatings, which provide an even, high light transmittance across the entire visible light spectrum, are applied to all of the lens and prism surfaces that transmit light. This minimises the loss of light due to reflection, thereby ensuring a more natural, clearer view.

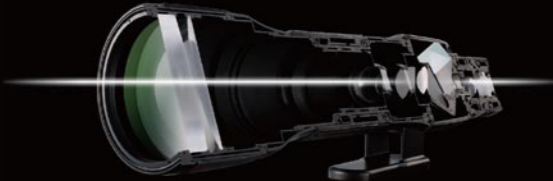


### Outstanding optical performance in a slim design: Roof (Dach) prism with superior prism coating technology

EDG Fieldscopes use a roof (Dach) prism, enabling an exterior design of unparalleled beauty. Angled models achieve clearer images thanks to an optical system that employs a prism featuring total reflection on the internal surfaces. In the straight models, a dielectric high-reflective multilayer prism coating is applied to a surface that does not offer total reflection in order to realise a brighter viewfield. Both straight and angled models boast an advanced level of exterior design and internal optical performance.

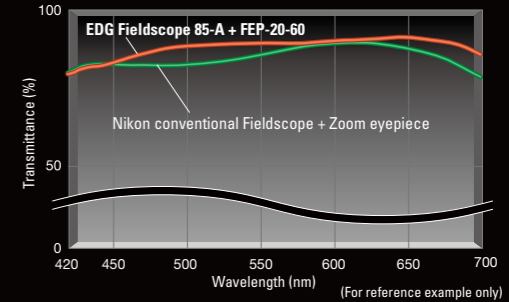


• Phase-correction coating applied to the roof surface of a roof (Dach) prism to deliver high-contrast images



### Crystal-clear view and superior colour fidelity: Cutting-edge optics for superior light transmission

A wealth of advanced technologies are integrated into each and every optical part of an EDG Fieldscope. This cutting-edge technology results in a higher light transmission rate and flatter characteristics across the entire visible light range. This means you'll experience a crystal-clear field of view and more natural colour reproduction.



# An exquisite body, achieved by sophisticated simulation engineering

Nikon EDG Fieldscopes deliver greater satisfaction for all aspects of viewing and digiscoping. Tested and proven for reliable performance in the most diverse conditions, you'll rest assured that you have the finest technology for observing and photographing wildlife as it truly is.



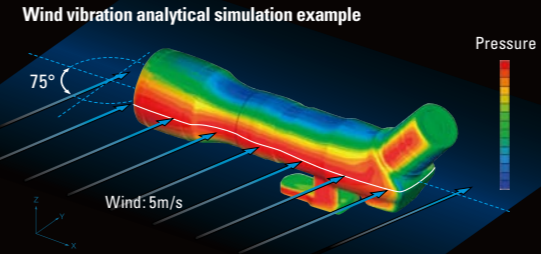
EDG Fieldscope 85

EDG Fieldscope 65-A



**More stable observation: Tougher structure, optimum balance and weight via CAE design**

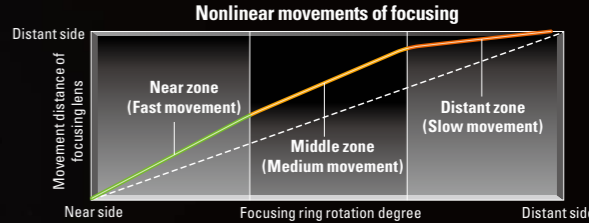
Nikon employed CAE (Computer Aided Engineering) in pursuit of the ideal body construction. We maintained a strict continuity from design, through simulation, to problem solving and re-design, in order to achieve the optimum weight and aerodynamic balance. To realise stability for both observation and digiscoping, the stiffness and integrity of the mount and tripod were analysed utilising the finite element method, and the equipment movements caused by regular operation and wind, as well as camera vibrations in digiscoping, were precisely simulated.



\* Wind pressure distribution used for dynamic response analysis.

**Smooth, comfortable focusing: Optimised Focusing System**

Ergonomically designed, the large focusing ring fits comfortably in your hands and allows you to operate at optimised speeds — fine action for focusing on distant subjects, and coarser action for nearby subjects. This results in smoother focusing, allowing you to capture your targets faster, and with much less stress.



**Optimal balance for observation and digiscoping: Three selectable tripod mount screw holes**

Tripod mount screw holes can be used depending on the application, such as observation or digiscoping.



**More comfortable viewing and digiscoping: Total system design**

Operability in both observation and digiscoping was given the utmost consideration from the earliest stages of planning and development. Examples of this include a bayonet mount for easy and secure connection of EDG eyepieces or Digital SLR Camera Attachment FSA-L2, and smooth focusing operation with a focusing ring even when a digital SLR camera is mounted — factors which set the standard for a whole new generation of Fieldscopes.



**Protection against the elements: Waterproofing and water-resistance**

EDG Fieldscope bodies and all EDG eyepieces have been sealed with O-rings to ensure comprehensive waterproofing performance\*1 (the body/eyepiece joint and the body/battery holder joint are water-resistant\*2). And both the body and eyepieces are filled with nitrogen gas to prevent fogging and condensation. This protection enables you to use EDG Fieldscopes with confidence in even the most demanding environments where sudden temperature changes are the norm.

\*1 Waterproof (up to 2 metres for 10 minutes) (NOT designed for underwater usage)  
 \*2 Water resistance: As tested by water equivalent to 1mm per minute, falling from a height of more than 200mm for a duration of 10 minutes (in normal use with an eyepiece attached to the main body correctly)

**Built-in sliding hood blocks harmful light and protects objective lens**

EDG FIELDSCOPES

# High-performance EDG eyepieces reveal a spectacular field of view

The seven new eyepieces demonstrate extraordinary EDG quality, too. Designed and developed with an advanced level of innovation, all feature a bayonet-with-lock design. Five are wide-angle models ranging from 20x to 75x\*, one offers ultra-long eye relief, and the other is a 20-60x zoom\*. To create these eyepieces, Nikon developed solutions for difficult optical design issues, merging a wide field of view with long eye relief. Also, a field flattener lens system has been adopted for these eyepieces to correct overall aberration and achieve a sharp image even to the edge of the field of view. The result is beautifully clear viewing.

\* When attached to EDG Fieldscope 85 series.

### Outstanding wide field of view and brightness [Wide eyepiece (FEP-20W)]

When mounted on EDG Fieldscope 85 series, the real field of view is 3.3° and the exit pupil is 4.3 mm. This wide eyepiece that delivers bright and high-resolution images is effective for use in low-light conditions such as at dusk and dawn.



### Wide field of view, high-eyepoint, high-resolution even at the periphery [Wide eyepiece (FEP-30W)]

The FEP-30W features a long eye relief of 25.4 mm and a wide field of view. It gives you a high-resolution, uniformly bright image throughout the viewfield, with superior quality even at the periphery.

### Ultra-long eye relief of 32.3 mm [Long eye relief (FEP-25LER)]

This eyepiece, with a long eye relief of over 30 mm, allows eyeglass wearers to use a Fieldscope without removing their glasses. Recommended for the judging of sports such as shooting or archery.

### Employs high-refractive-index aspherical glass lens [Zoom eyepiece (FEP-20-60)]

Zoom-type eyepiece with magnification of 20x to 60x\*. The optical system features a high-refractive-index aspherical glass lens. Corrects image distortions and provides a flat image even at the periphery at both low- and high-magnification settings.



High-refractive-index aspherical glass lens



Left magnification value: With EDG Fieldscope 85 series. Right magnification value: With EDG Fieldscope 65 series.  
\* Photos are simulated images when eyepieces are mounted on EDG Fieldscopes. Image size varies according to subject distance, and brightness varies depending on magnification.

EDG Eyepieces	FEP-20W	FEP-30W	FEP-38W	FEP-50W	FEP-75W	FEP-25 LER	FEP-20-60
EDG Fieldscope diameter	85	65	85	65	85	65	85
Magnification (x)	20	16	30	24	38	30	50
Angular field of view (Real/degree)	3.3	4.1	2.4	3.0	1.9	2.4	1.4
Angular field of view (Apparent/degree)*1	60		64.3		64.3		64.3
Field of view at 1,000m (m)	58	72	42	52	33	42	24
Exit pupil (mm)	4.3	4.1	2.8	2.7	2.2	1.7	1.6
Relative brightness	18.5	16.8	7.8	7.3	4.8	2.9	2.6
Eye relief (mm)	20.1		25.4		17.9		17.8
Length (mm)*2	59		81*3		74		71
Outer diameter (mm)*2	63		63		63		63
Weight (g)*2	240		390*3		230		230

\*1) Calculated based on ISO 14132-1:2002 \*2) Without caps \*3) With detachable turn-and-slide eyecup



## Layer upon layer of leading-edge innovation

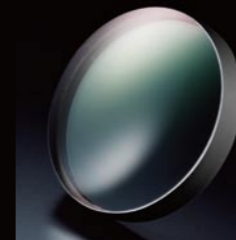
Enjoy the EDG advantage. Nikon designers have amassed layer upon layer of the most advanced optical innovations, and harnessed them synergistically in a way that inspires you to observe the finest textures and detail. With amazingly accurate colours, up close. Striking contrast, colour fidelity and brightness are conspicuous throughout the entire field of view, allowing you to see nature the way it deserves to be seen.



EDG 8x42

### Remarkably sharp resolution and contrast-rich images throughout the entire view: Nikon's legendary ED glass

View nature with a vibrantly fresh level of contrast and brightness. EDG binoculars utilise lens elements made from Nikon's renowned ED (Extra-low Dispersion) glass — of the same lineage as that employed in the finest camera lenses used by leading professionals to create images that astound. Our advanced optical system minimises colour fringing caused by chromatic aberration, even when observing objects that tend to make chromatic aberration conspicuous — such as adjacent whites and blacks. EDG binoculars give you enhanced image fidelity with a contrast-rich, high-resolution view.



### Exceptional colour fidelity, contrast, and resolution: Nikon's advanced prism coating technologies

Experience pure, untainted whites. Nikon's dielectric high-reflective multilayer prism coating reflects light at a theoretical level of 99 percent or more, for uncompromised colour fidelity and brighter, contrast-rich images. Phase-correction coating is applied to the roof of the Dach prism to keep undesired phase shift caused by inner reflections to an absolute minimum — thereby realising superior contrast and resolution.

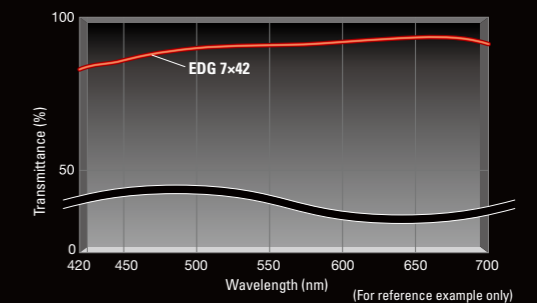


### Bright, clear views even in difficult conditions: Advanced multilayer coatings, comprehensive countermeasures against flare and ghosting

Obtain clear views, even with bad lighting. Nikon applies an advanced multilayer coating with a superior light transmission rate to all lens and prism surfaces, ensuring superior brightness and colour fidelity. These coatings minimise light reflections, thereby reducing ghosting effects. Comprehensive countermeasures to prevent flare and ghosting include painting of the lens barrel interiors and internal parts matte black, and the use of aperture rings. Even in difficult lighting situations, such as when observing wildlife that is backlit or at dusk, it is substantially easier to distinguish field marks thanks to the brighter, clearer view.

### Clearer colours, brighter images: The increased light transmission that EDG delivers

All optical elements, including lenses and prisms, benefit from numerous innovations. Applying sophisticated technologies results in a higher light transmission rate and flatter characteristics across the entire spectrum of visible light. You'll be amazed at the crystal-clear field of view and more natural colour reproduction.



(For reference example only)



ED glass



Non-ED glass

\* Simulated images

### Edge-to-edge sharpness: Field-flattener lens system

See everything more clearly — up to the very edge of your field of view. The field-flattener lens system Nikon utilises in EDG binoculars minimises field curvature, producing images that are as clear in peripheral areas as they are at the centre. Moreover, our expert lens design precisely compensates astigmatism and coma aberration, a key benefit when tracking wildlife that constantly strays from the centre. Now, you can enjoy a sharp, clear image throughout the entire field of view.



Field-flattener lens system



Without field-flattener lens system

\* Simulated images



**Comfortable viewing: Binocular design as an extension of your body**

EDG binoculars have been engineered from every key angle to attain supreme handling performance. From their optimum weight and handling balance, to the materials and shape that best fit your hands, to the effortless focus and ease of carrying over many hours, these binoculars are built for comfort. The shorter bridge makes for secure holding, even with a single hand. Magnesium alloy is used for the lens barrels to ensure a light yet durable body. A non-PVC elastomer with a low specific gravity, and which complies with Nikon's strict environmental standards, is utilised for the grips. And to achieve the requisite overall light weight, the materials employed in all parts were thoroughly reevaluated. The turn-and-slide eyecups with their four-step adjustments offer enhanced comfort and convenience to wearers of glasses and non-wearers alike.



**Easy-to-operate: Focusing ring/dioptrre adjustments**

The focusing ring is large enough for easy, precise focusing even when wearing gloves. To adjust dioptrre, just pull out the focus ring and turn. Once you've made your adjustment, push the ring back to avoid unintended changes.



**Continuous viewing comfort: Essential for long hours of observation**

Careful attention was paid to ensure the maximum possible comfort during long hours of observation. The long eye relief provides a wide, easy-to-see field of view even for wearers of glasses. The rubber neckstrap has sufficient width to alleviate the risk of neck strain, and the length is adjustable with a single touch. The horn-shaped eyecups prevent undesired light from entering from the sides, so you can concentrate on your viewing.



**Tested under severe conditions: Outstanding reliability**

EDG binoculars are designed to withstand the harshest weather conditions, enabling you to venture with confidence into even the most challenging environments. Rigorous O-ring sealing gives you airtight water- and moisture-proofing\*, and all models are filled with nitrogen gas to prevent fog from forming due to sudden temperature changes. You can operate these binoculars even with your gloves on, at temperatures of -20 degrees centigrade. All models are supplied with a dedicated lightweight carrying case.



\* Waterproof (up to 5 metres for 10 minutes) (NOT designed for underwater usage)

**Exceptional handling in diverse situations**

Experience the difference. Nikon EDG binoculars are designed for enhanced viewing comfort, even during long hours of use in the most demanding environments. The well-balanced body is the ideal weight and shape for comfortable carrying and secure holding. The robust construction means you can pay less attention to protecting your gear while concentrating on the subject you're observing.



EDG 8x42



EDG 8x32

## Specifications

EDG VR Fieldsopes	EDG Fieldscope 85 VR	EDG Fieldscope 85-A VR
Objective diameter (mm)	85	85
Close focusing distance (m)	5.0	5.0
Length (mm)* <sup>1</sup>	379	398
Height × width (mm)* <sup>1</sup>	141×104	141×104
Weight (g)* <sup>1</sup>	2,400 (without batteries)	2,400 (without batteries)
Vibration Reduction effects (at 25°C)* <sup>2</sup>	Observation: Degree of vibration is reduced to approx. 1/8 Digiscoping: Equivalent of a shutter speed approx. 2 stops faster	
Power source	AA alkaline battery x4, AA lithium battery x4 or AA Ni-MH (nickel metal hydride) battery x4	
Battery life (at 25°C)* <sup>3</sup>	Approx. 17 hours (AA alkaline battery), approx. 31 hours (AA lithium battery), approx. 15 hours [AA Ni-MH (nickel metal hydride) battery]	

\*<sup>1</sup> Body only \*<sup>2</sup> Based on Nikon Fieldscope measuring standard (used with tripod) \*<sup>3</sup> Battery life varies depending on conditions, temperature and vibration.

EDG Fieldsopes	EDG Fieldscope 85	EDG Fieldscope 85-A	EDG Fieldscope 65	EDG Fieldscope 65-A
Objective diameter (mm)	85	85	65	65
Close focusing distance (m)	5.0	5.0	3.3	3.3
Length (mm)*	379	398	313	332
Height × width (mm)*	127×102	131×102	120×88	131×88
Weight (g)*	2,030	2,030	1,560	1,620

\* Body only

EDG Binoculars	EDG 7x42	EDG 8x42	EDG 10x42	EDG 8x32	EDG 10x32
Magnification (x)	7	8	10	8	10
Objective diameter (mm)	42	42	42	32	32
Angular field of view (Real/degree)	8.0	7.7	6.5	7.8	6.5
Angular field of view (Apparent/degree)*	52.2	56.6	59.2	57.2	59.2
Field of view at 1,000m (m)	140	135	114	136	114
Exit pupil (mm)	6.0	5.3	4.2	4.0	3.2
Relative brightness	36.0	28.1	17.6	16.0	10.2
Eye relief (mm)	22.1	19.3	18.0	18.5	17.3
Close focusing distance (m)	3.0	3.0	3.0	2.5	2.5
Interpupillary distance adjustment (mm)	55-76	55-76	55-76	54-76	54-76
Length (mm)	149	148	151	138	138
Width (mm)	141	141	141	139	139
Weight (g)	785	785	790	655	650

\* Calculated based on ISO 14132-1:2002

## Optional accessories

Fieldscope  
Stay-on-cases\*



SOC-8  
(for EDG Fieldscope 85/85-A)



SOC-7  
(for EDG Fieldscope 65/65-A)

Fieldscope Eyepiece Mount Adapter



EMA-1  
Enables mounting of conventional screw-in type MC/DS eyepieces or FSA-L1 to EDG Fieldscope.

\* Depending on your area, these accessories may be included or sold separately.  
Please contact your local dealer or Nikon office in your region for further information.

Specifications and equipment are subject to change without any notice or obligation on the part of the manufacturer.  
The colour of products in this brochure may differ from the actual products due to the colour of the printing ink used.  
October 2011  
©2011 NIKON VISION CO., LTD.

**WARNING** Never look at the sun directly through a Fieldscope or binoculars. It may cause damage to or loss of eyesight.



**NIKON VISION CO., LTD.**

Nikon Futaba Bldg., 3-25, Futaba 1-chome, Shinagawa-ku,  
Tokyo 142-0043, Japan  
Tel: +81-3-3788-7697 Fax: +81-3-3788-7698  
[www.nikon.com/sportoptics](http://www.nikon.com/sportoptics)



En