

110
million
NIKKOR

My NIKKOR





NIKKOR

Unlimited Imaging Possibilities

Lenses are the decisive factor in image creation. Offering a diverse lineup of primes and zooms, from ultrawide-angle to super-telephoto, NIKKOR lenses are powerful tools for photographers and videographers to express the essence of their vision, regardless of subject, environment or lighting conditions. Building on the pride and craftsmanship cultivated throughout the more than 60 years of NIKKOR F lens development, the lineup of NIKKOR Z lenses created in pursuit of a new dimension in optical performance is steadily being strengthened. These two lineups deliver wider imaging possibilities than ever, with unsurpassed image quality and reliability.



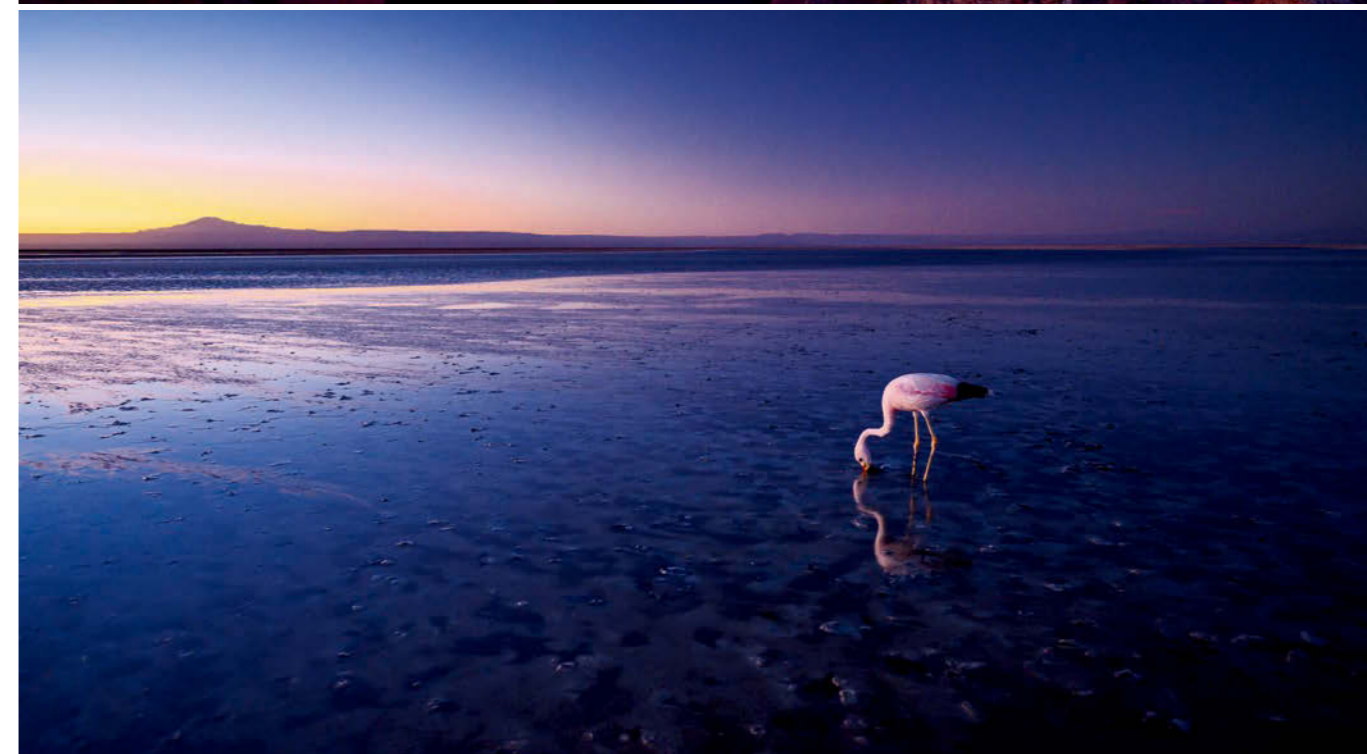
Fast, ultrawide-angle lens providing superb rendering performance

NIKKOR Z 20mm f/1.8 S S-Line



NIKKOR Z 20mm f/1.8 S © Taylor Gray

An outstanding 20 mm prime lens. Enjoy dynamic photo expression in high resolution with the unique, ultra-wide perspective of a 20 mm focal length combined with the low-light capabilities of f/1.8 maximum aperture. Its angle of view excels at landscape and wide interior shooting, while its speed is ideal for environmental portraits with lush, soft backgrounds, and sharp, clean, low-light shots with faithful point light reproduction. It is also great for video work in tight spaces.



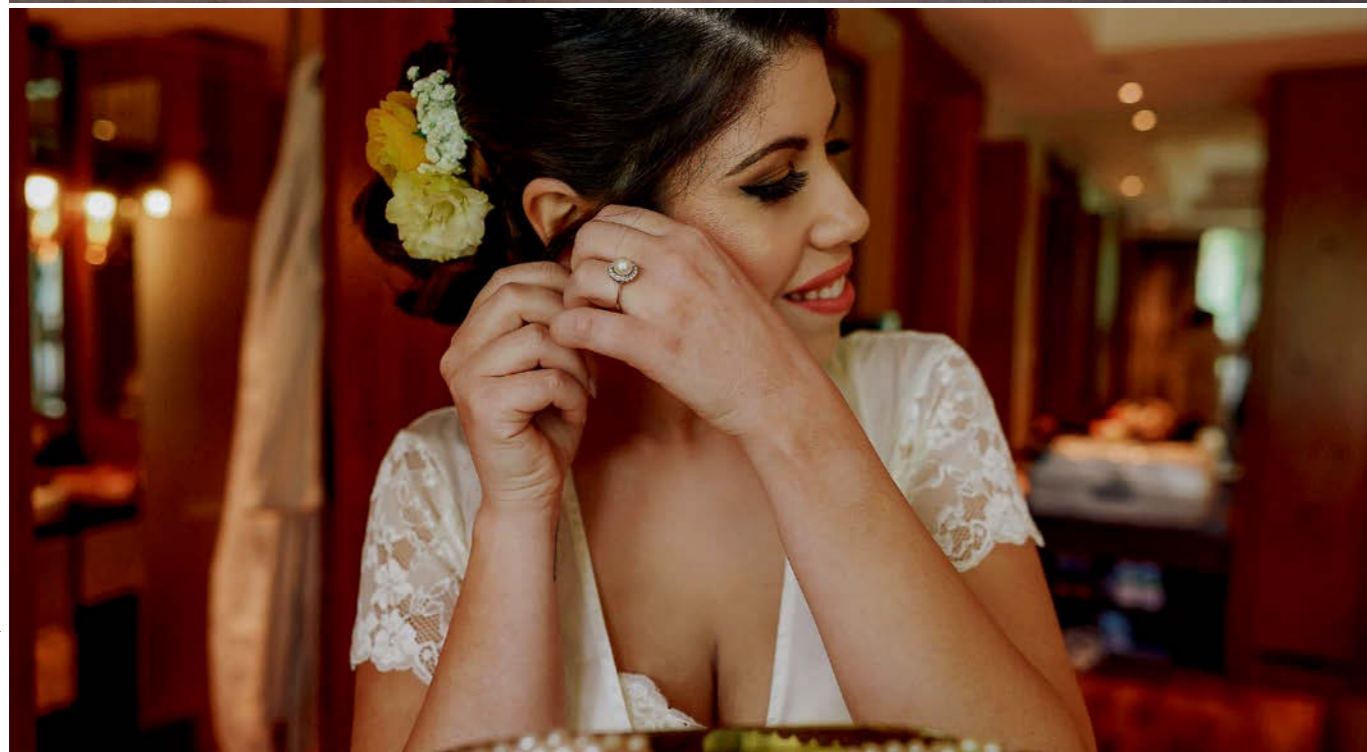
STM	N	ED	AS
M/A	IF	FS	E

Lens construction: 14 elements in 11 groups
 Minimum focus distance: 0.2 m/0.66 ft
 Maximum reproduction ratio: 0.19x
 Filter-attachment size: 77 mm
 Accessories: Hood HB-95/ Case CL-C1



Fast, wide-angle prime lens for rendering of details with superior resolution

NIKKOR Z 24mm f/1.8 S S-Line



NIKKOR Z 24mm f/1.8 S © Beatrice Contrini

PHOTOGRAPHER: BEATRICE CONTRINI

I am a happy wife, proud mother, and passionate photographer who grew up in Italy and has always had a strong desire to get to know new people and places, which has fuelled my adventures of travelling the world and living in different countries for the past 20 years. I'm passionate about creating timeless photographs that reflect the human connection. My style is natural, elegant, and creative — but above all, I ensure my clients have a stunning portfolio of high-quality images to remind them of their special moments. I look out for everyone's beauty and their unique attributes, and photography enables me to do that in the best way possible.

An impressive 24 mm prime lens. With a versatile focal length and bright f/1.8 aperture, it's your perfect partner for landscapes, cityscapes, environmental portraits, architecture and group shots. Producing edge-to-edge sharpness, even at its widest aperture, it lets you handle diverse wide-angle applications with outstanding resolution throughout the entire frame and naturally soft bokeh. It's also vital for video applications, covering essential establishing shots and much more.



STM	N	ED	AS
M/A	RF	PS	E

Lens construction: 12 elements in 10 groups
 Minimum focus distance: 0.25 m/0.82 ft
 Maximum reproduction ratio: 0.15x
 Filter-attachment size: 72 mm
 Accessories: Hood HB-88 / Case CL-C1



Portable wide-angle prime lens ideal for everyday snapshots

NIKKOR Z 28mm f/2.8



NIKKOR Z 28mm f/2.8 © Dom Cherry

An advantageous power of expression has been concentrated in the lightest* and smallest* body in the NIKKOR Z prime lens lineup. Not only is it portable, which makes it optimal for snapshots, but its wide angle of view and short minimum focus distance of 0.19 m also give you the flexibility to capture diverse scenes in your own unique way, all with exceptionally high image quality.

* As of November 18, 2021

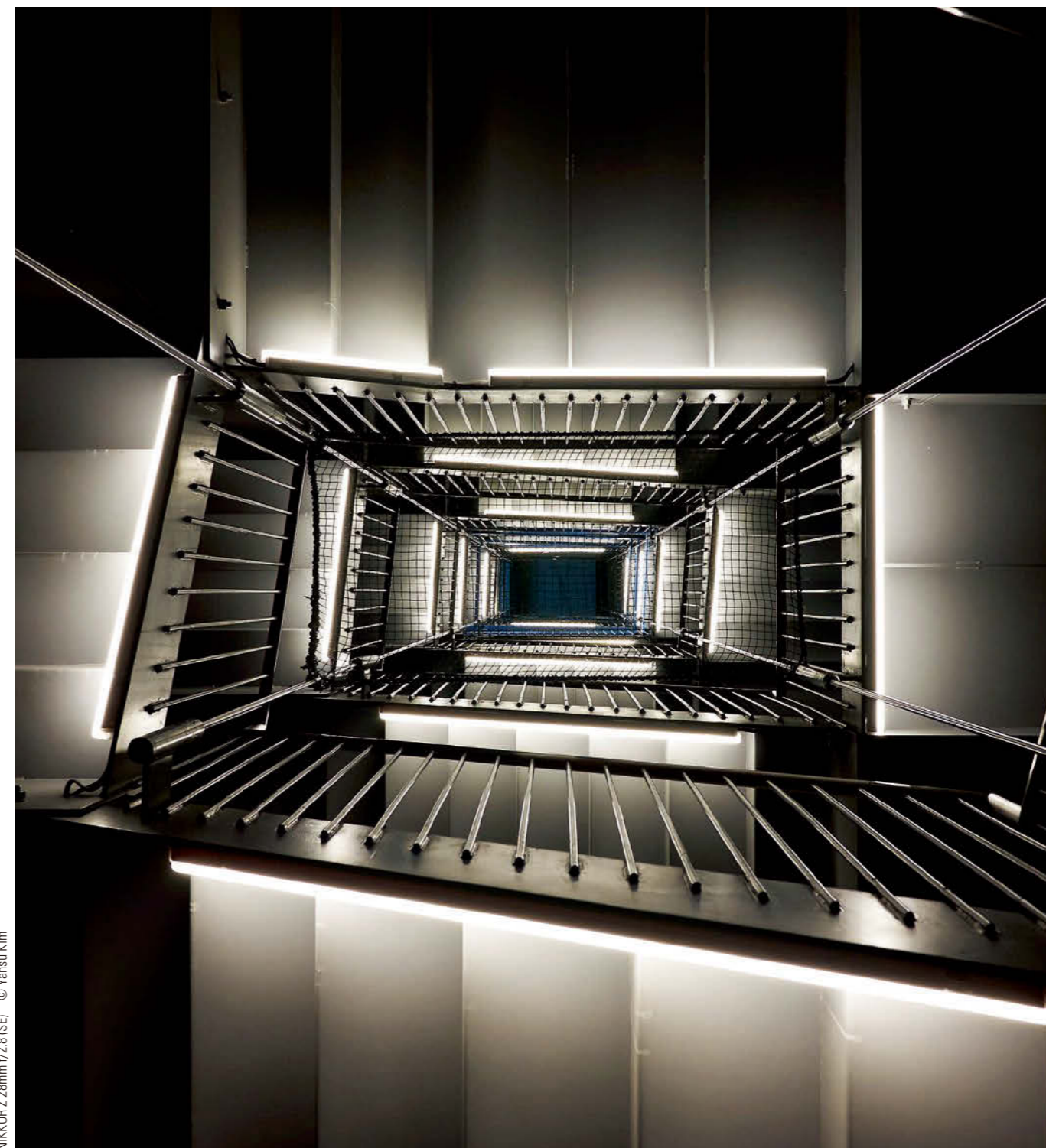
STM AS M/A IF ^{Multi}FS E

Lens construction: 9 elements in 8 groups
Minimum focus distance: 0.19 m/0.63 ft
Maximum reproduction ratio: 0.2x
Filter-attachment size: 52 mm
Accessories: Case CL-C4 (optional)



Compact and lightweight, wide-angle prime with iconic style

NIKKOR Z 28mm f/2.8 (SE)



NIKKOR Z 28mm f/2.8 (SE) © Yansu Kim

This Special Edition (SE) lens* features a heritage design that matches the Z fc body. It packs tremendous power of expression into a portable and stylish form that you'll want to take everywhere you go. Featuring a wide angle of view as well as a short minimum focus distance, this carry-anywhere lens is ideal for anyone who enjoys casual picture-taking with high image quality.

*The lens inherits its design from classic NIKKOR lenses of the Nikon FM2 film SLR camera era.

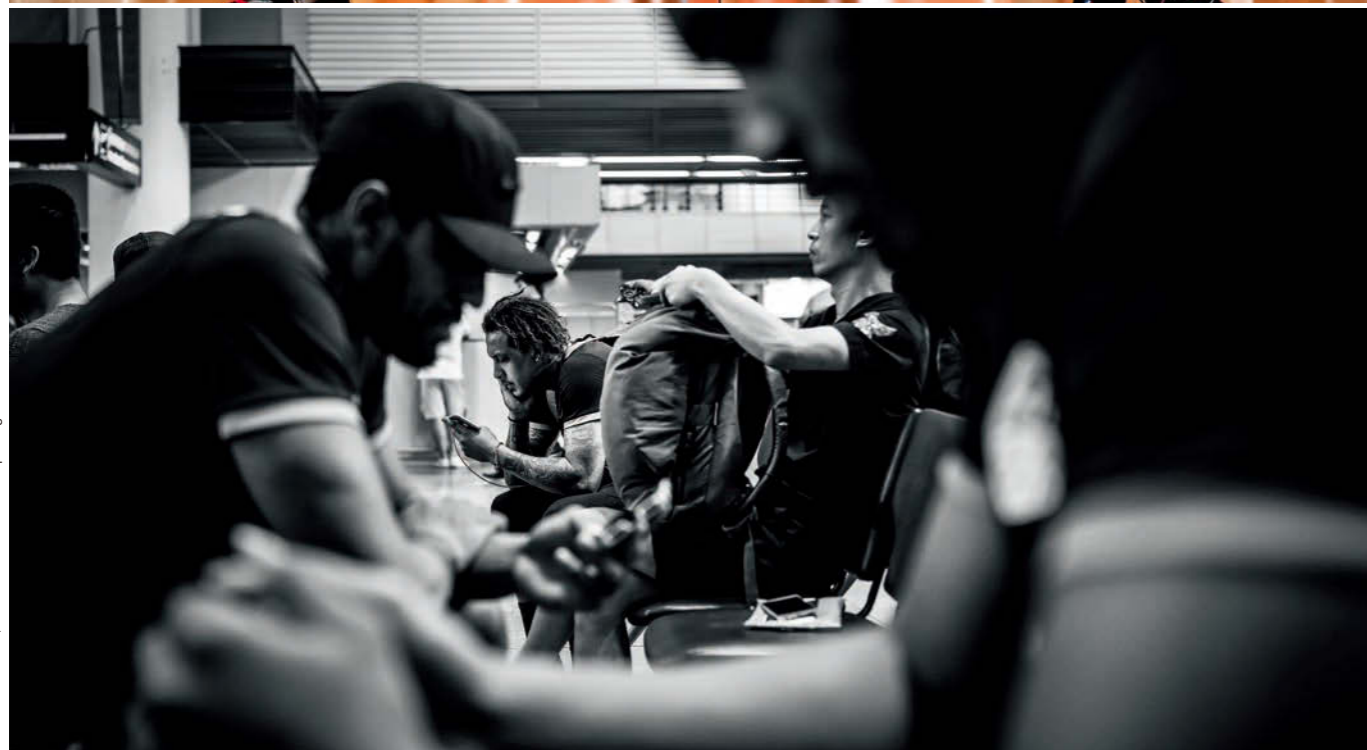
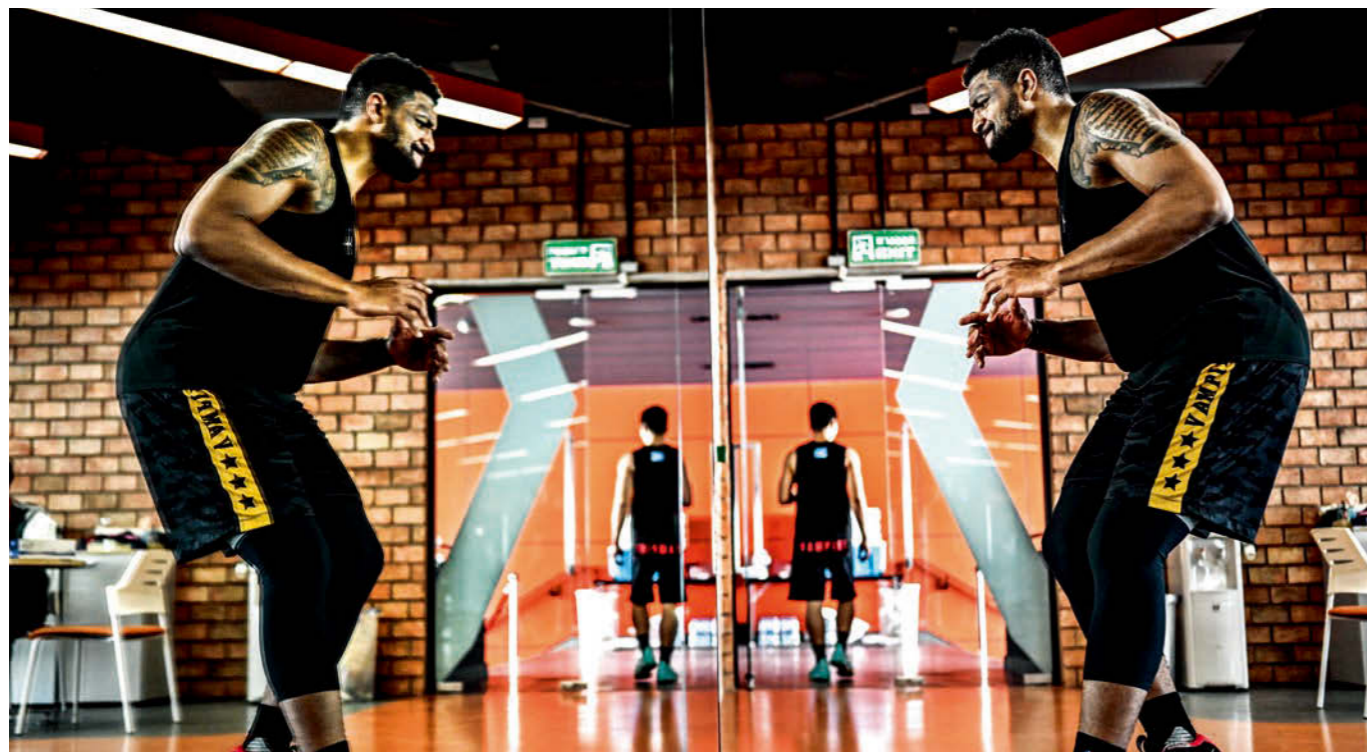
STM AS M/A IF ^{Multi}FS E

Lens construction: 9 elements in 8 groups
Minimum focus distance: 0.19 m/0.63 ft
Maximum reproduction ratio: 0.2x
Filter-attachment size: 52 mm
Accessories: Case CL-C4 (optional)



Compact and light, fast wide-angle lens with superior resolution

NIKKOR Z 35mm f/1.8 S S-Line

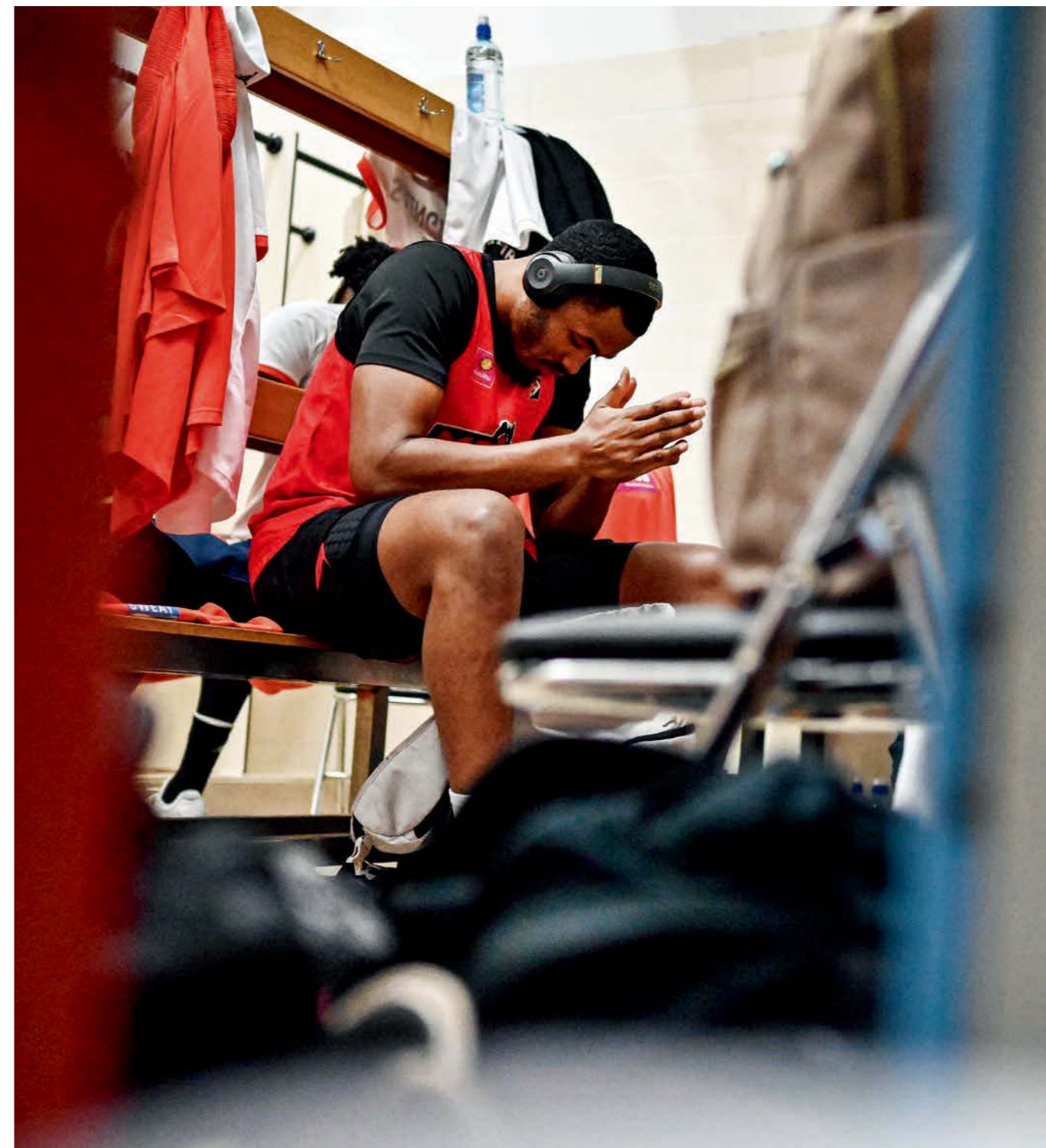


NIKKOR Z 35mm f/1.8 S © Onvisa Thewphaingarm

PHOTOGRAPHER: **ONVISA THEWPHAINGARM**

I have always loved the saying "a picture is worth a thousand words", and I believe that a photo can tell so much. Behind each image there is a beautiful and complete story, and that is the message I wish to convey within each frame. My passion is to capture shots that express emotions at their fullest – just like songs that express sorrow, joy, or sadness.

35 mm prime. A desert-island lens for many. Wide enough to nail the view. Shallow enough to draw out subjects. Fast enough to make the impossible possible. And so sharp... just utter, unwavering sharpness. In reimagining this classic lens for the new Z mount system, we may very well have perfected it.



STM N ED AS
M/A RF F/S E

Lens construction: 11 elements in 9 groups
Minimum focus distance: 0.25 m/0.82 ft
Maximum reproduction ratio: 0.19x
Filter-attachment size: 62 mm
Accessories: Hood HB-89/ Case CL-C1



Portable standard prime that realises impressive bokeh expression

NIKKOR Z 40mm f/2



NIKKOR Z 40mm f/2 © Laura Pritchett

Team this ultra-compact prime with any Z camera in almost any situation. It's wide enough for street work, landscapes and interiors, but tight enough for authentic portraits and candid shots. The fast f/2 maximum aperture powers through low lighting, helps freeze fast action and separates a subject from the background with beautiful bokeh effects. Its short minimum focus distance of 0.29 m also lets you get closer to subjects — optimal for tabletop photos.

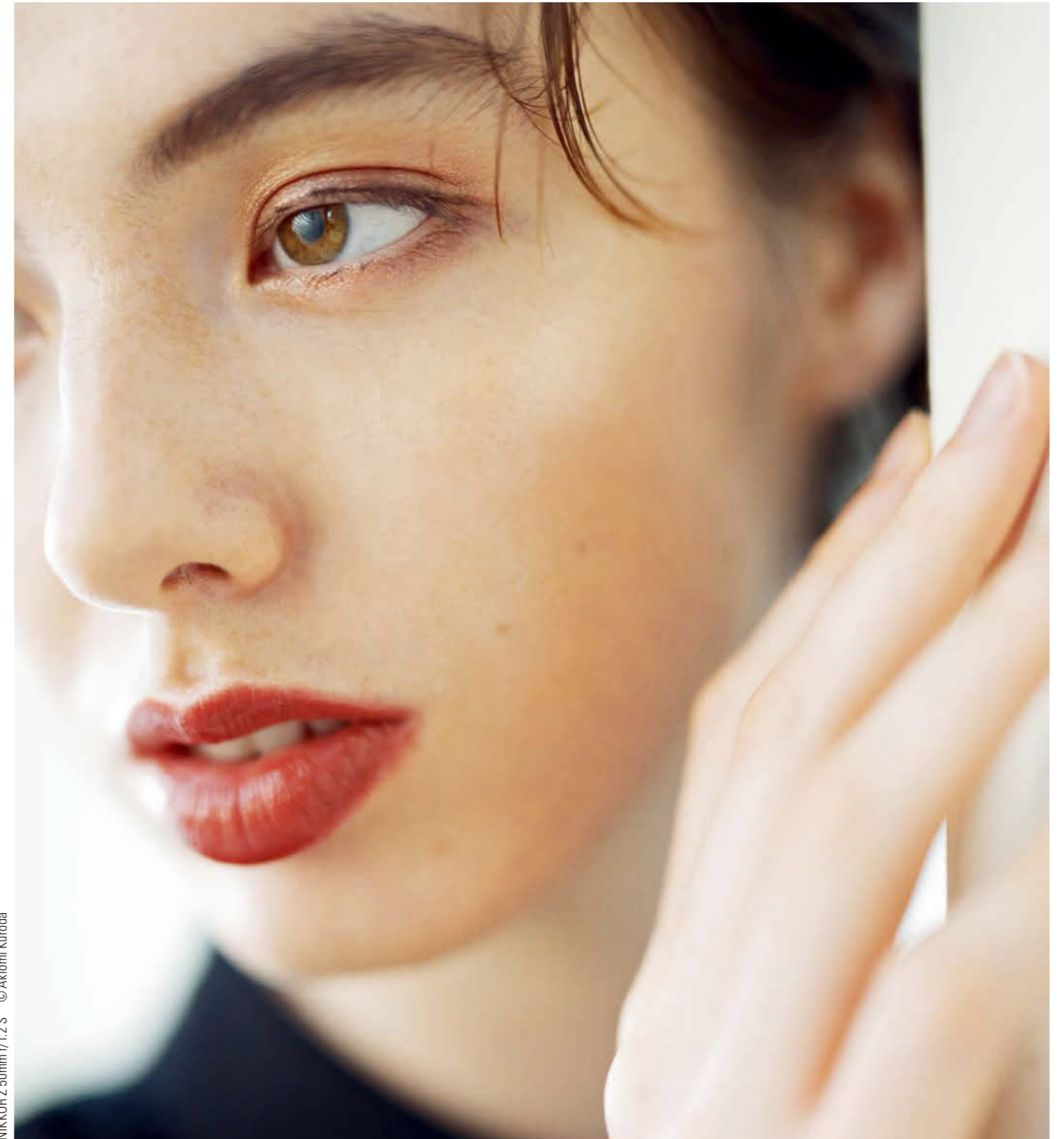
STM AS M/A IF E

Lens construction: 6 elements in 4 groups
Minimum focus distance: 0.29 m/0.96 ft
Maximum reproduction ratio: 0.17x
Filter-attachment size: 52 mm
Accessories: Case CL-C4 (optional)



Realising the highest level of optical performance of the S-Line

NIKKOR Z 50mm f/1.2 S S-Line



NIKKOR Z 50mm f/1.2 S © Akiomi Kuroda

The fast f/1.2 aperture enables you to apply elaborate bokeh that delivers beautiful gradation to bring effective emphasis to your primary subject with a naturally blurred background, creating a sense of depth. It turns a tight shooting scenario into a mesmerisingly dreamy space while the fast, accurate autofocus resolves the focal plane tack-sharp even with an extremely shallow depth of field at the maximum aperture. Now your subject will be more impressive and impactful.

STM N ARNEO ED AS
M/A IF PS E

Lens construction: 17 elements in 15 groups
Minimum focus distance: 0.45 m/1.48 ft
Maximum reproduction ratio: 0.15x
Filter-attachment size: 82 mm
Accessories: Hood HB-94 / Case CL-C2



Iconic fast prime with new levels of sharpness and depth-of-field control

NIKKOR Z 50mm f/1.8 S S-Line

50 mm prime. An icon. Visionary perspective. Versatile focus depth. Capable of delivering striking, decisive images in nearly any light. Powered by a new stepping motor, it focuses quickly and accurately, while remaining so quiet that it's barely audible even to the camera's sensitive built-in microphone. Perfect for videography, street and wedding photography.



NIKKOR Z 50mm f/1.8 S © Andri Tei

PHOTOGRAPHER: ANDRI TEI

As a wedding photographer, I typically capture anything from candid documentary to posed portraiture, as well as close-up details of a couple's big day such as decorations and flowers. In my line of work, the lens and its focal length are the most important tools to help me tell their love story from different perspectives. I'm always challenging myself to push the limit of these tools to see what I can achieve.

STM N ED AS M/A IF E

Lens construction: 12 elements in 9 groups
 Minimum focus distance: 0.4 m/1.32 ft
 Maximum reproduction ratio: 0.15x
 Filter-attachment size: 62 mm
 Accessories: Hood HB-90/ Case CL-C1



Optical perfection redefined with the fastest NIKKOR lens ever

NIKKOR Z 58mm f/0.95 S Noct S-Line

The NIKKOR Z 58mm f/0.95 S Noct is a one-of-a-kind manual focus lens with the largest maximum aperture of any NIKKOR ever: f/0.95. Made possible by innovations of the new Z mount, it will deliver thrilling new capabilities for the Z series mirrorless system — vast depth-of-field control and elaborate bokeh for portraiture, superb point-image reproduction and low-light performance for night landscapes and astrophotography — all in an immaculately constructed lens with precision feel and brilliant operability.

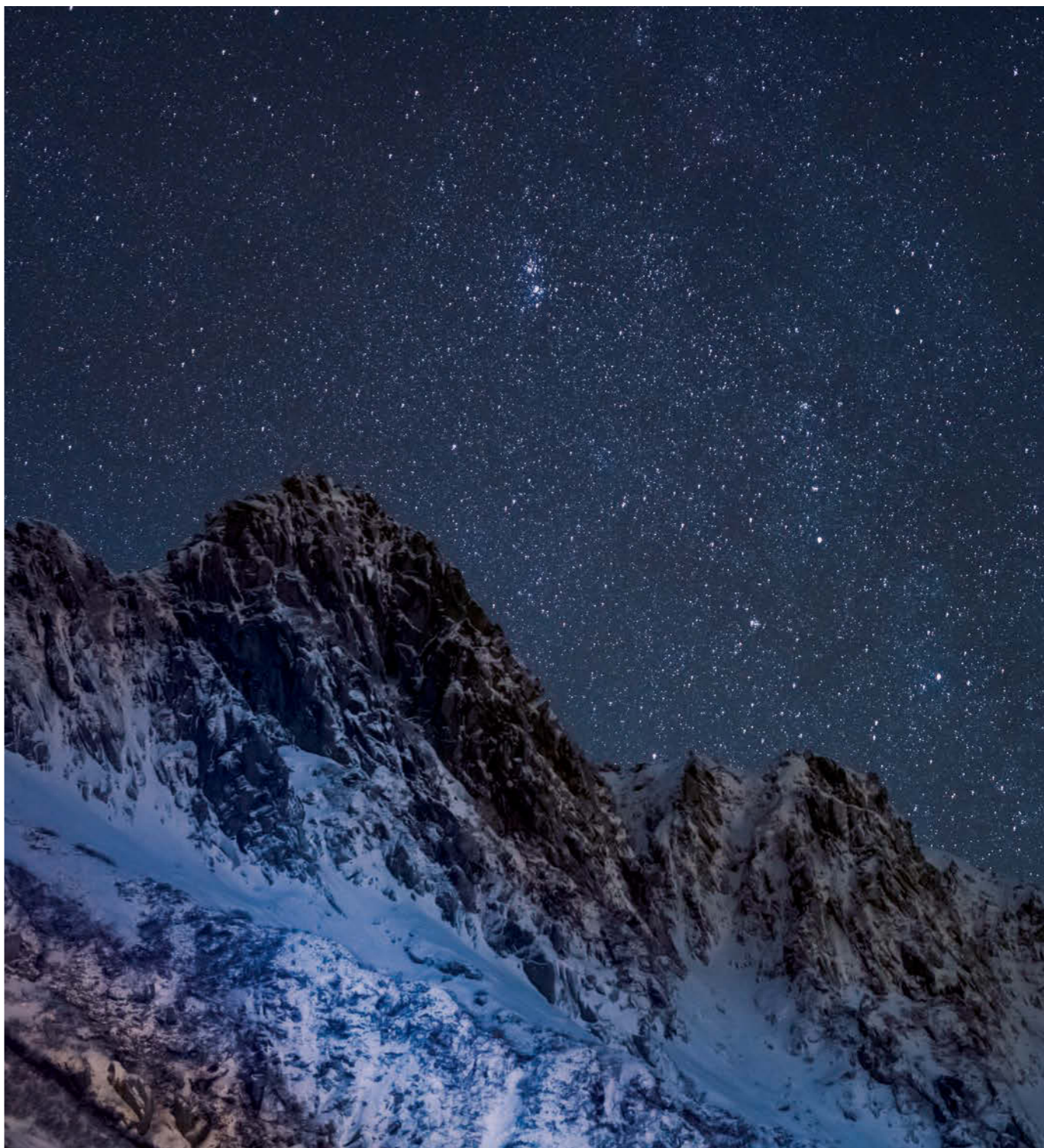
© Christian Ammann



NIKKOR Z 58mm f/0.95 S Noct © Christian Ammann



© Hideyuki Morigi



N ARNEO ED AS E

Lens construction: 17 elements in 10 groups
 Minimum focus distance: 0.5 m/1.64 ft
 Maximum reproduction ratio: 0.19x
 Filter-attachment size: 82 mm
 Accessories: Hood HN-38 / Trunk Case CT-101



Fast, medium-telephoto prime lens with sharpness and natural bokeh

NIKKOR Z 85mm f/1.8 S S-Line

One of the advantages of the Nikon Z mount system is the outstanding optical performance that creates exquisite bokeh effects. In contrast, sharp resolution is remarkably emphasised across the entire shooting range. This fascinating 85 mm prime lens is great for shooting portraits, headshots, fashion, weddings, tight video shots, street photography or any situation that highlights the human form. Its overwhelming rendering capability will surely change your perception of f/1.8 lenses.



NIKKOR Z 85mm f/1.8 S © Vicky Papas-Vergara

PHOTOGRAPHER: VICKY PAPAS-VERGARA

I consider myself an artist. I love to paint, I love to create wearable art, and photography is another form of my artistic expression. My photographic style is avant-garde, and I like to style my subjects in their alter ego or a glorified version of how they see themselves. With the NIKKOR Z 85mm f/1.8 S, I am able to showcase my subjects in an entirely new way – by making them almost "pop" out of the photos. The lens performance has made it so much easier to bring my vision to life through the creation of this series of portraits.

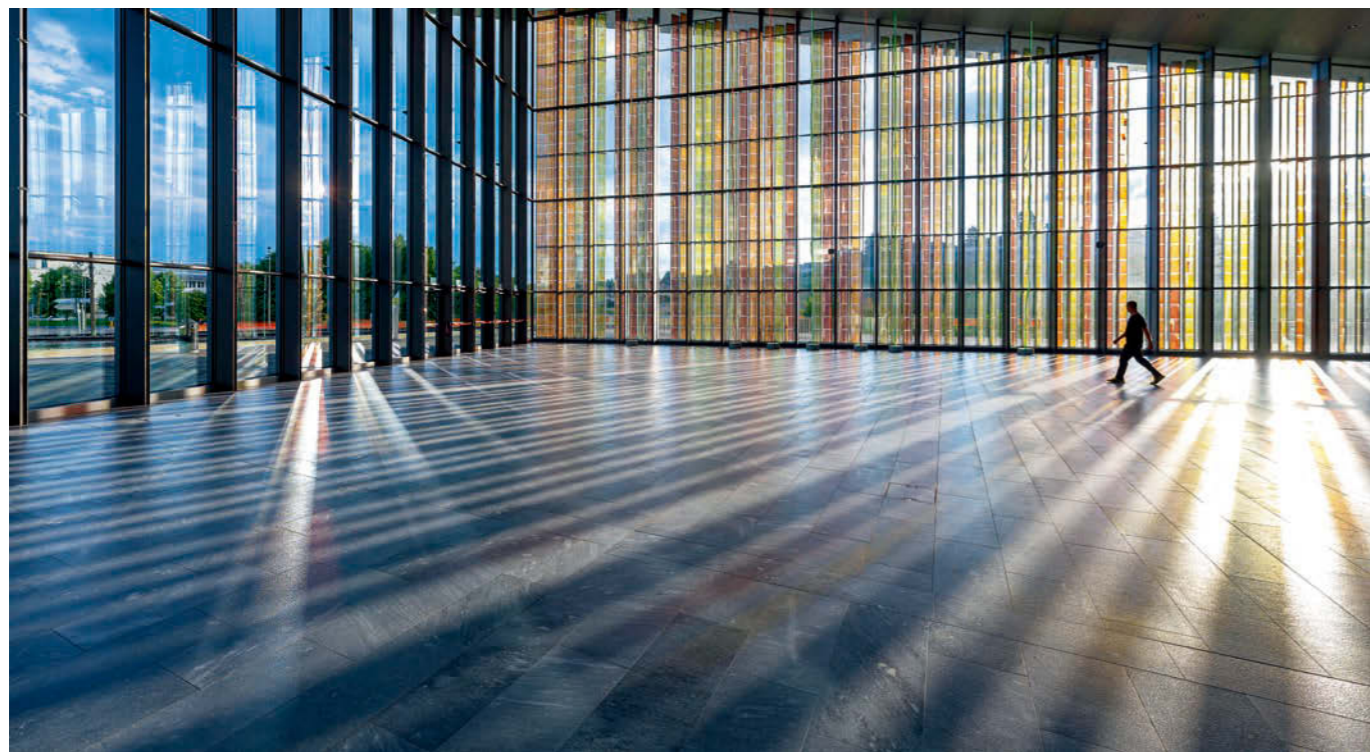
STM N ED M/A IF VR ES E

Lens construction: 12 elements in 8 groups
 Minimum focus distance: 0.8 m/2.62 ft
 Maximum reproduction ratio: 0.12x
 Filter-attachment size: 67 mm
 Accessories: Hood HB-91/ Case CL-C1

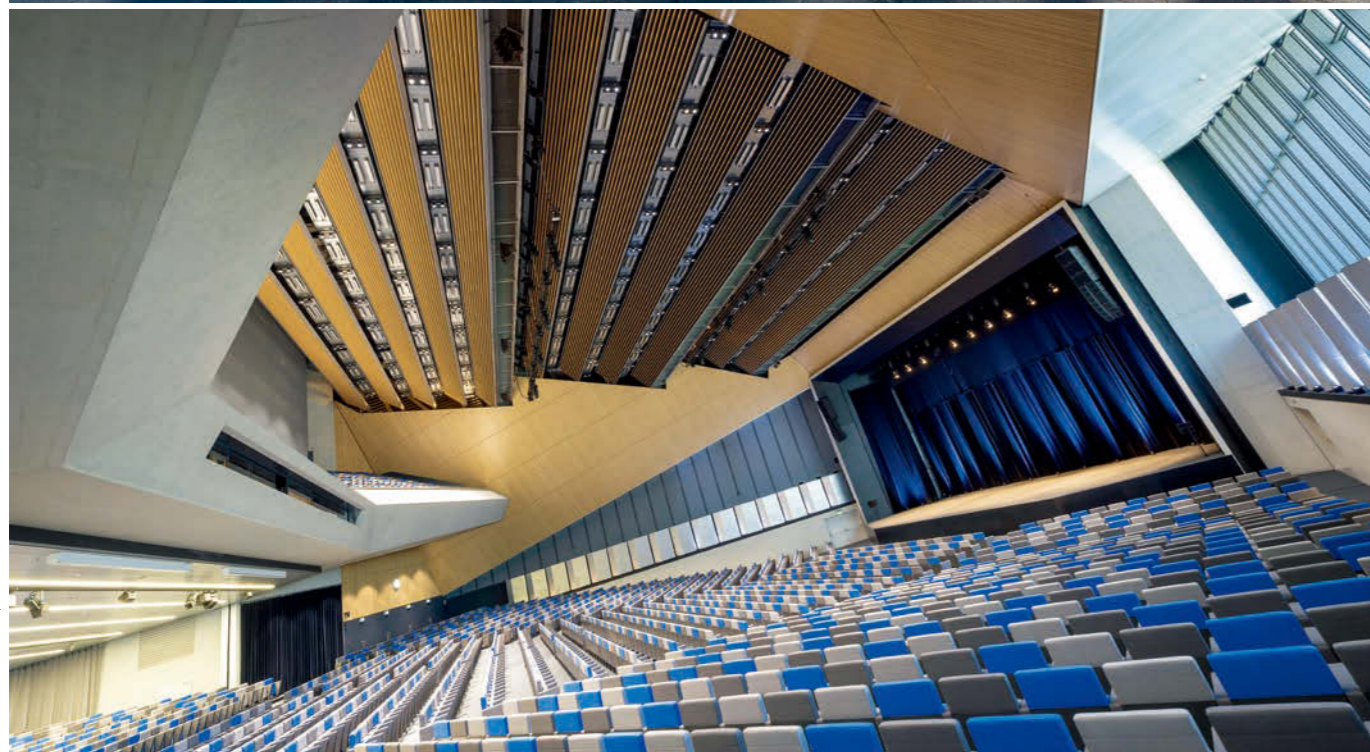


Ultra-wide perspectives with outstanding rendering performance

NIKKOR Z 14-24mm f/2.8 S S-Line



© Adrien Barakat



NIKKOR Z 14-24mm f/2.8 S © Adrien Barakat

The world's shortest* and lightest* ultrawide-angle f/2.8 zoom lens. Let this compact lens unleash its truly eye-opening optical performance by taking in stunning expanses of your surroundings. Beautiful stars in the night sky can be reproduced in near-perfect point shapes. For landscape photography, where the sun often appears in the frame, this lens lets you shoot clear images with well-controlled flare and ghost. Furthermore, despite being an ultrawide-angle lens, its smaller front lens element with moderate curvature enables the attachment of a filter via the dedicated lens hood.



© John Weatherby

STM N ARNEO ED AS
M/A IF E

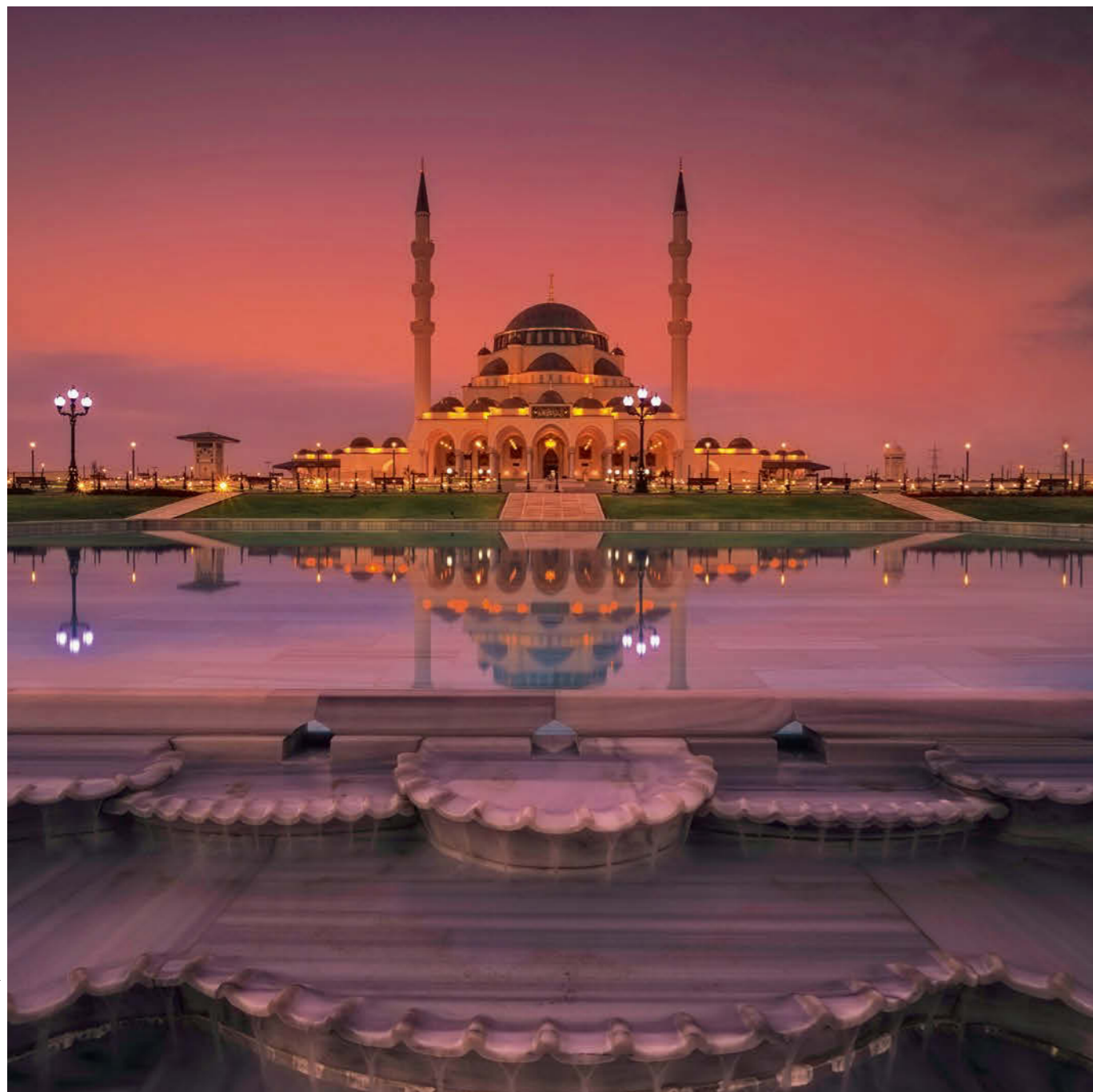
Lens construction: 16 elements in 11 groups
 Minimum focus distance: 0.28 m/0.92 ft
 Maximum reproduction ratio: 0.13x
 Filter-attachment size: 112 mm
 Accessories: Hood HB-96, HB-97 / Case CL-C2

* Among interchangeable zoom lenses for full-frame (Nikon FX-format) digital cameras with interchangeable lenses with a focal range beginning at 14 mm or lower, and a constant maximum aperture of f/2.8, available as of September 16, 2020. Statement based on Nikon research.



Compact ultra-wide zoom for scenic photography with frame-filling sharpness

NIKKOR Z 14-30mm f/4 S **S-Line**



NIKKOR Z 14-30mm f/4 S © Alexander Ramat

PHOTOGRAPHER: ALEXANDER RAMAT

Photography is my passion. Through photography, I feel closer to nature and I endeavour to showcase the Earth's beauty. I hope that I can capture my audience's attention with my images and communicate the importance of saving and protecting the amazing creations of nature for future generations.

The filter-attachable ultra-wide angle zoom lens. Travel and landscape photographers' portable go-to lens for establishing a sense of place and pushing perspective. Capable of scenic photography that's consistently sharp throughout the entire frame. Video so clean and smooth it rivals real life and elevates the look and feel of camera movement. The possibilities are as wide-ranging as the 14-30 mm focal length.

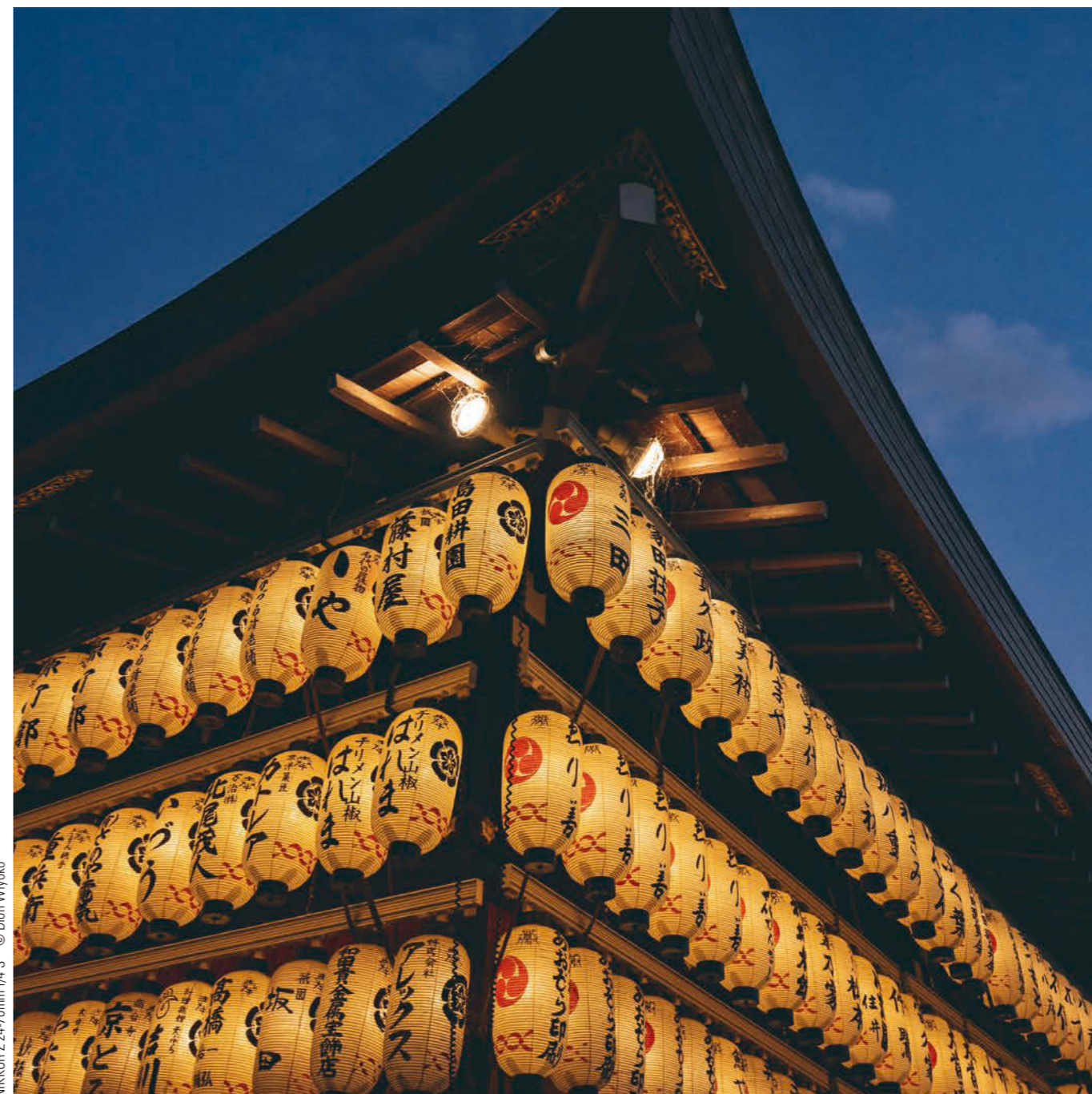
STM N ED AS M/A IF E

Lens construction: 14 elements in 12 groups
Minimum focus distance: 0.28 m/0.92 ft
Maximum reproduction ratio: 0.16x
Filter-attachment size: 82 mm
Accessories: Hood HB-86 / Case CL-C1



Photo and video powerhouse covering the sweet spot of the focal length range

NIKKOR Z 24-70mm f/4 S **S-Line**



NIKKOR Z 24-70mm f/4 S © Dion Wiyoko

PHOTOGRAPHER: DION WIYOKO

I want my photos to tell a visual story, conveying what I see and feel during my trips abroad. I love travelling and snapping spontaneous photos — capturing people, architecture and landscapes in my shots. I hope to enable my audience to experience and enjoy being in a foreign country through my photos.

This 24-70 mm zoom lens covers the sweet spot of the focal length range, capturing everything from landscapes to portraits. This reimagining of the classic everyday zoom, optimised and evolved for the new Z mount cameras, achieves breakthrough image quality and performance for both stills and videos in a portable package.

STM N AS ED E D
 AS M/A IF E

Lens construction: 14 elements in 11 groups
Minimum focus distance: 0.3 m/0.99 ft
Maximum reproduction ratio: 0.3x
Filter-attachment size: 72 mm
Accessories: Hood HB-85 / Case CL-C1



Powerful, indispensable mid-range zoom with dazzling speed and brightness

NIKKOR Z 24-70mm f/2.8 S S-Line

Meet the most versatile lens in the Z series stable. A powerful mid-range zoom that's indispensable for a wide range of photo and video applications, from landscapes and street photography to full-length and environmental portraits, all with stunning clarity, high resolution and natural bokeh. Elevated by a new multi-focusing system, next-generation flare reduction and advanced features and functionality, the NIKKOR Z 24-70mm f/2.8 S is a must-have lens that marks the sweet spot of performance, precision and optical superiority.



NIKKOR Z 24-70mm f/2.8 S © Shadi Nassri

PHOTOGRAPHER: SHADI NASSRI

Chasing light is a passion of mine. I have travelled around the world to pursue this passion; from the cold depths of the Arctic to the heart of a desert. My photography journey has even brought me to capture a variety of subjects such as auroras, stars and nebulas. Since 12 years ago, I became a professional photographer and in actual fact, I have been doing photography for 30 years.



STM N ARNEO ED AS
M/A IF FFS E

Lens construction: 17 elements in 15 groups
Minimum focus distance: 0.38 m/1.25 ft
Maximum reproduction ratio: 0.22x
Filter-attachment size: 82 mm
Accessories: Hood HB-87 / Case CL-C2



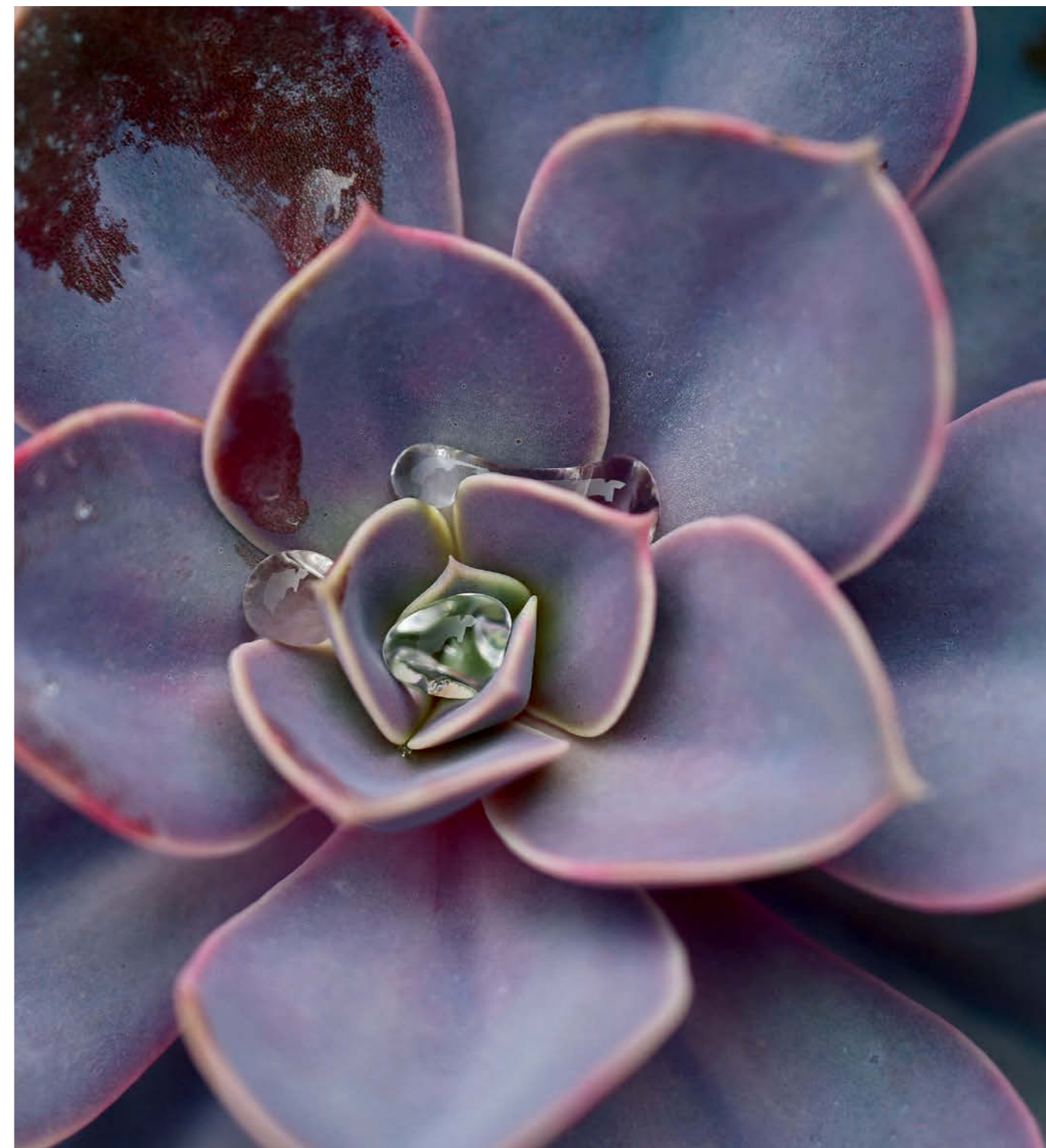
Easy-to-carry, 5x standard zoom lens with uncompromising image quality

NIKKOR Z 24-120mm f/4 S **S-Line**



NIKKOR Z 24-120mm f/4 S © Erik McRitchie

The extensive zoom range allows you to shoot a broad spectrum of subjects and scenes with just one lens. The telephoto zoom range covers up to 120-mm focal length while the maximum aperture stays at f/4 all the way. Furthermore, the superior optical performance of this S-Line lens delivers excellent image expression in high resolution. This highly versatile lens enhances agility and makes for an enjoyable shooting experience.



STM	N	ARNEO	ED	AS
ASED	M/A	IF	FS	E

Lens construction: 16 elements in 13 groups
Minimum focus distance: 0.35 m/1.15 ft
Maximum reproduction ratio: 0.39x
Filter-attachment size: 77 mm
Accessories: Hood HB-102 / Case CL-C2



Fast telephoto zoom lens that strongly supports exquisite image expression

NIKKOR Z 70-200mm f/2.8 VR S S-Line



NIKKOR Z 70-200mm f/2.8 VR S © Alina Rudya

Strikingly sharp images with spectacular resolution and clarity right to the frame edge. From weddings to wildlife and so much more — all with the incredible low-light performance. Its extremely short minimum focus distance deliver the lens' speed and performance enhancements even in the tightest shooting scenarios. Optical advancements also support moviemakers. VR performance with an effect of 5.5 stops*1, the maximum in the history of NIKKOR interchangeable lenses*2, ensures exceptional sharpness when shooting handheld.



© Chris McLennan



© Alina Rudya

VR	STM	N	ARNEO	FL	SR
ED	AS	M/A	IF	F ^{1/4} S	E

Lens construction: 21 elements in 18 groups
 Minimum focus distance: 0.5 m/1.64 ft (at 70 mm)
 Maximum reproduction ratio: 0.2x
 Filter-attachment size: 77 mm
 Accessories: Hood HB-92 / Case CL-C3

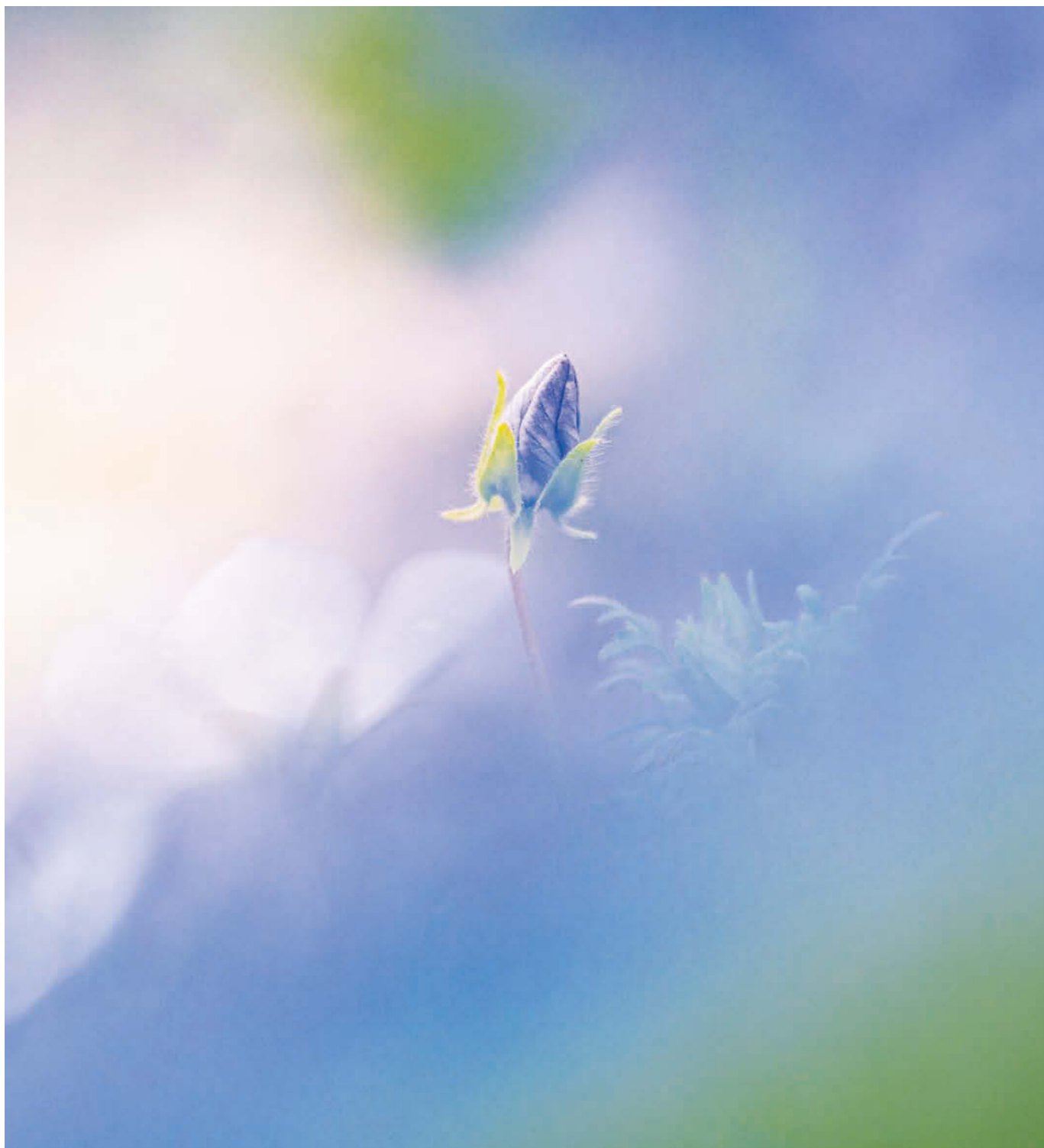
*1 Based on CIPA Standard. This value is achieved when attached to an FX-format camera, with zoom set at the maximum telephoto position.

*2 As of January 7, 2020.



Super-telephoto zoom lens with superb optical performance and operability

NIKKOR Z 100-400mm f/4.5-5.6 VR S **S-Line**



NIKKOR Z 100-400mm f/4.5-5.6 VR S © saizou

Enjoy telephoto shooting throughout a wide focal-length range with outstanding rendering performance, even with a teleconverter attached. The minimum focus distance of 0.75 m enables you to approach your subject and explore different kinds of image expression. The 5.5-stop VR and various other advantageous features including Inner Balance Technology ensure reliable shooting with comfortable operability and handling. This lens is all about letting you fully concentrate on the subject as you shoot.



© Shannon Wild

VR STM N ARNEO ED
 SUPER ED M/A IF M/A FS E

Lens construction: 25 elements in 20 groups
Minimum focus distance: 0.75 m/2.46 ft
Maximum reproduction ratio: 0.38x
Filter-attachment size: 77 mm
Accessories: Hood HB-103 / Case CL-C3



A lightweight, compact standard zoom lens with high image quality

NIKKOR Z 24-50mm f/4-6.3



NIKKOR Z 24-50mm f/4-6.3 © Maggie Law

PHOTOGRAPHER: MAGGIE LAW

As a photographer, my great passion is to discover the previously unseen, and I hope to be able to let people appreciate the hidden beauty of nature while bringing them a sense of peacefulness through my photos.

Easy to carry and an absolute thrill to shoot with, it covers the sweet spot of the focal length range: 24 mm to 50 mm. Big optical performance with the clarity, consistency and brightness of the Z mount system is packed into the shortest and lightest full-frame standard zoom lens in its class*. Optimal balance among convenient zoom range, compact design and superior performance makes it the perfect choice to carry around for a wide variety of subjects and scenes.

STM ED AS M/A IF E

Lens construction: 11 elements in 10 groups
Minimum focus distance: 0.35 m / 1.15 ft
Maximum reproduction ratio: 0.17x
Filter-attachment size: 52 mm
Accessories: Hood HB-98 (optional) / Case CL-C4 (optional)

* Among full-frame format zoom lenses for mirrorless cameras with interchangeable lenses, available as of July 21, 2020. Statement based on Nikon research.



Light and compact, all-in-one zoom lens for diverse shooting environments

NIKKOR Z 24-200mm f/4-6.3 VR



NIKKOR Z 24-200mm f/4-6.3 VR © Céline Jentzsch

Ready for your next excursion, this versatile all-in-one zoom lens covers every shot along the way with remarkably true-to-life detail. Advanced Nikon technologies realise capture of photos and videos just as you see them with minimal distortion and stunning clarity. With an effect of up to 5.0 stops* of built-in Vibration Reduction (VR), take razor-sharp handheld pictures, even in low light.

VR STM ARNEO AS ED AS M/A IF E

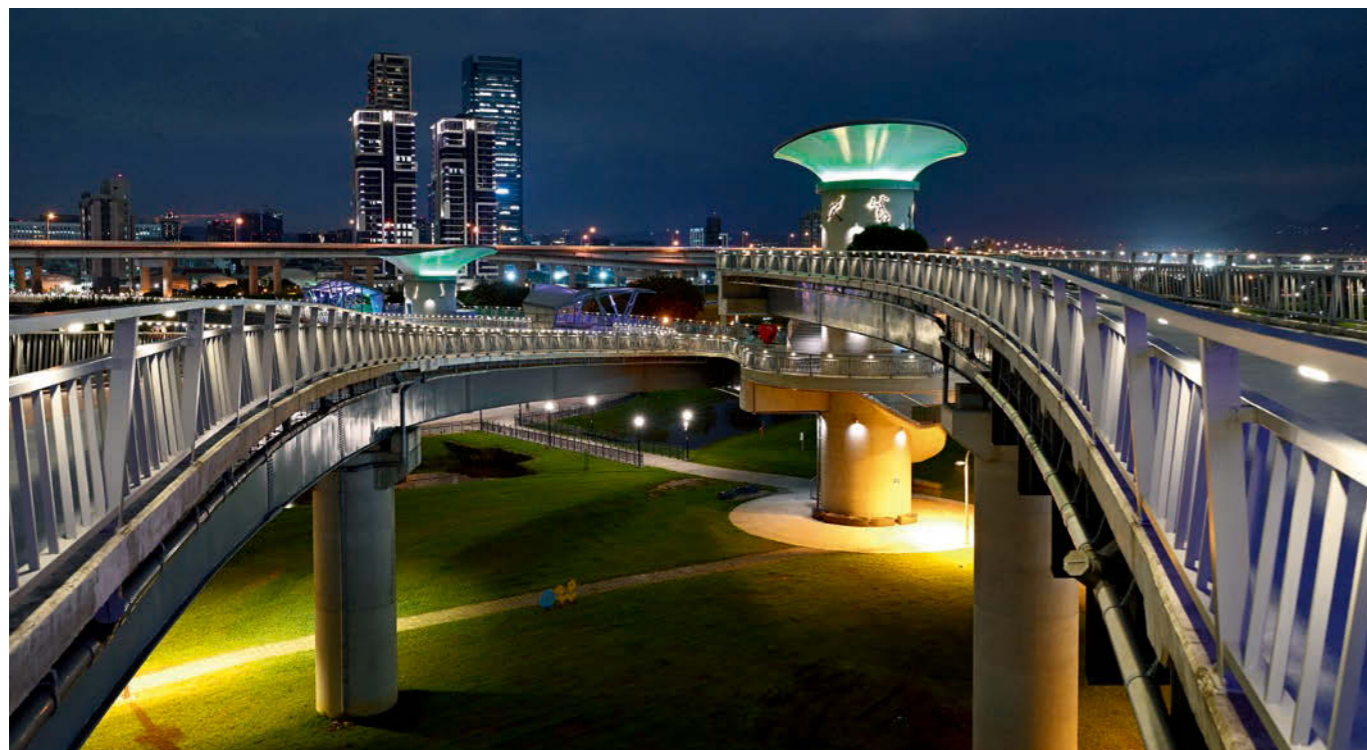
Lens construction: 19 elements in 15 groups
Minimum focus distance: 0.5 m / 1.64 ft (at 24 mm)
Maximum reproduction ratio: 0.28x
Filter-attachment size: 67 mm
Accessories: Hood HB-93 / Case CL-C1

* Based on CIPA Standard. This value is achieved when attached to an FX-format camera, with zoom set at the maximum telephoto position.



An affordable, light and compact standard zoom lens that supports diverse scenes

NIKKOR Z 28-75mm f/2.8



NIKKOR Z 28-75mm f/2.8 © Jean Lee

If you're looking for an accessible, go-to lens that lets you explore different creative expressions, this lens is it. It covers a frequently used focal length range with a constant maximum aperture of f/2.8. The bright maximum aperture lets you enjoy large and soft bokeh expression in your images and allows for faster shutter speeds even in low-light situations. The easy-to-carry body with excellent optical performance gives you more freedom to capture a wide variety of scenes.



STM ^{ED} ED AS M/A
IF E

Lens construction: 15 elements in 12 groups
 Minimum focus distance: 0.19 m/0.63 ft
 Maximum reproduction ratio: 0.34x
 Filter-attachment size: 67 mm
 Accessories: Hood HB-93A / Case CL-C2



A 7.8x high-power zoom lens in a portable body, covering diverse scenes

NIKKOR Z DX 18-140mm f/3.5-6.3 VR



NIKKOR Z DX 18-140mm f/3.5-6.3 VR © Riccardo Casarico

Capture diverse scenes during a trip or in everyday life more impressively with a single lens. With its versatile focal length, the lens realises exquisite image expression with outstanding rendering performance at all zoom positions, for both stills and videos. Your range of scenes and subjects can be further expanded using the short minimum focus distance of 0.2 m and highly effective Vibration Reduction that provides an effect equivalent to a shutter speed 5.0 stops faster.



VR STM ED AS
M/A IF E

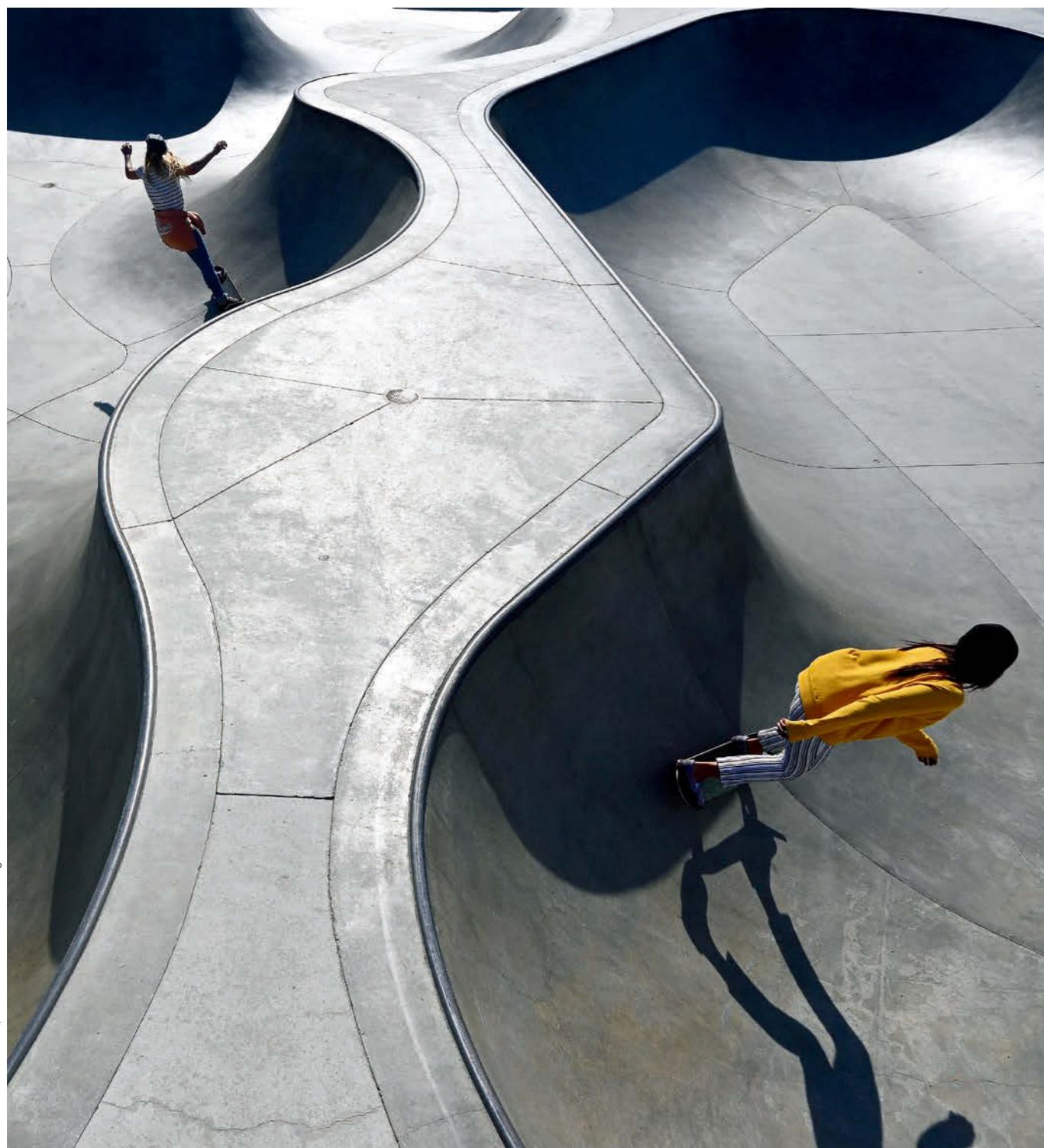
DX

Lens construction: 17 elements in 13 groups
Minimum focus distance: 0.2 m/0.66 ft
Maximum reproduction ratio: 0.33x
Filter-attachment size: 62 mm
Accessories: Hood HB-101 (optional) / Case CL-C1 (optional)



Compact and light, standard zoom lens with amazing image quality

NIKKOR Z DX 16-50mm f/3.5-6.3 VR



NIKKOR Z DX 16-50mm f/3.5-6.3 VR © Shawn Corrigan

Vibrant streets, landscapes, portraits, low-light scenes, action, and more. The highly practical zoom range is ideal for a wide variety of scenes and subjects. Extremely short minimum focus distance of 0.2 m/0.66 ft (at 24 mm) facilitates the capture of sharply focused images of close subjects. The powerful Vibration Reduction (VR) keeps your videos steady and stills sharp. This smallest of the NIKKOR Z lenses retracts into itself for compactness and protection.

DX
VR STM ED AS M/A IF E
 Lens construction: 9 elements in 7 groups
 Minimum focus distance: 0.2 m/0.66 ft (at 24 mm)
 Maximum reproduction ratio: 0.2x
 Filter-attachment size: 46 mm
 Accessories: Hood HN-40 (optional) / Case CL-C4 (optional)



Telephoto zoom lens with great reach and superb agility

NIKKOR Z DX 50-250mm f/4.5-6.3 VR



NIKKOR Z DX 50-250mm f/4.5-6.3 VR © Alex Stead

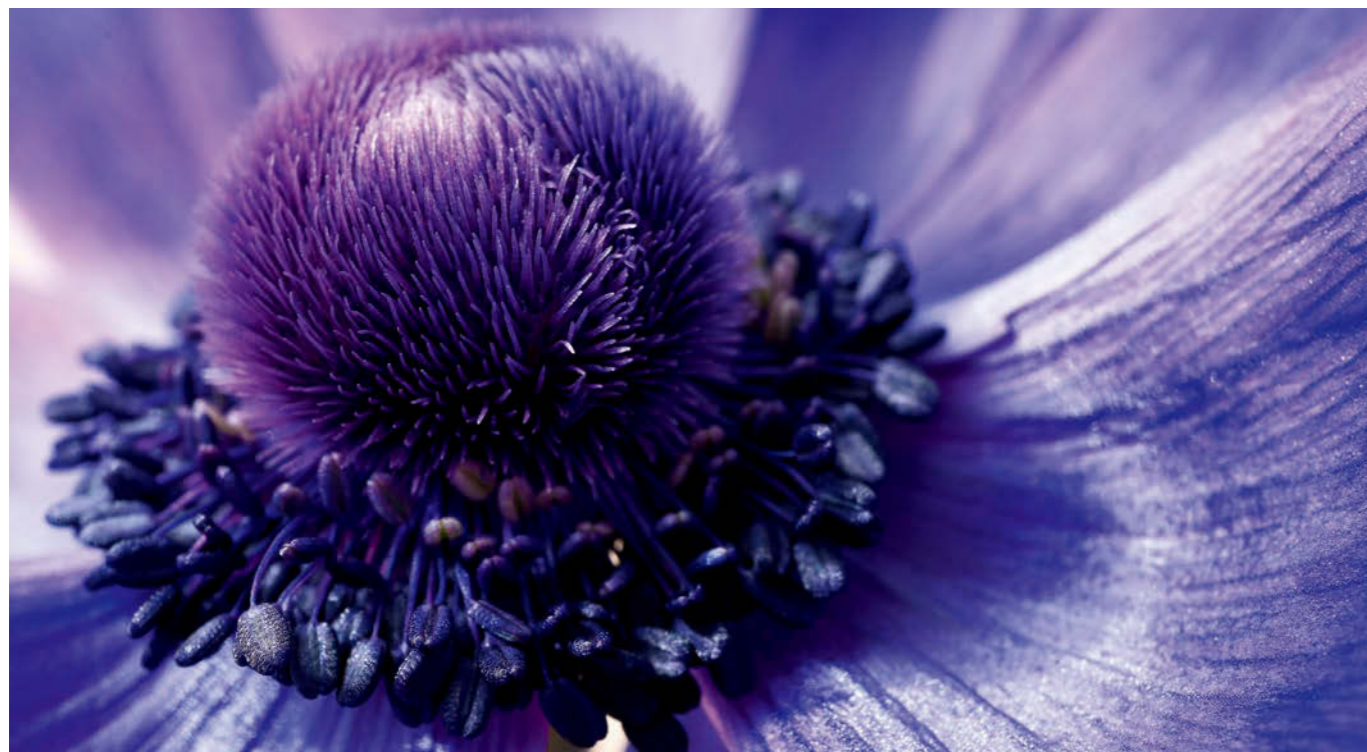
Get closer to the action — wildlife, sports, concerts, events and more. And you'll be surprised at the superior resolution realised with the large-diameter Z mount at the maximum aperture regardless of focal-length range or shooting distance. Despite being a telephoto zoom lens, impressive close-ups can be shot with a short minimum focus distance of 0.5 m/1.64 ft (at 50 mm). Your videos will be stable and natural, and telephoto photos sharp and clear with the powerful effect of the built-in VR.

DX
VR STM ED M/A IF E
 Lens construction: 16 elements in 12 groups
 Minimum focus distance: 0.5 m/1.64 ft (at 50 mm)
 Maximum reproduction ratio: 0.23x
 Filter-attachment size: 62 mm
 Accessories: Hood HB-90A (optional) / Case CL-C1 (optional)



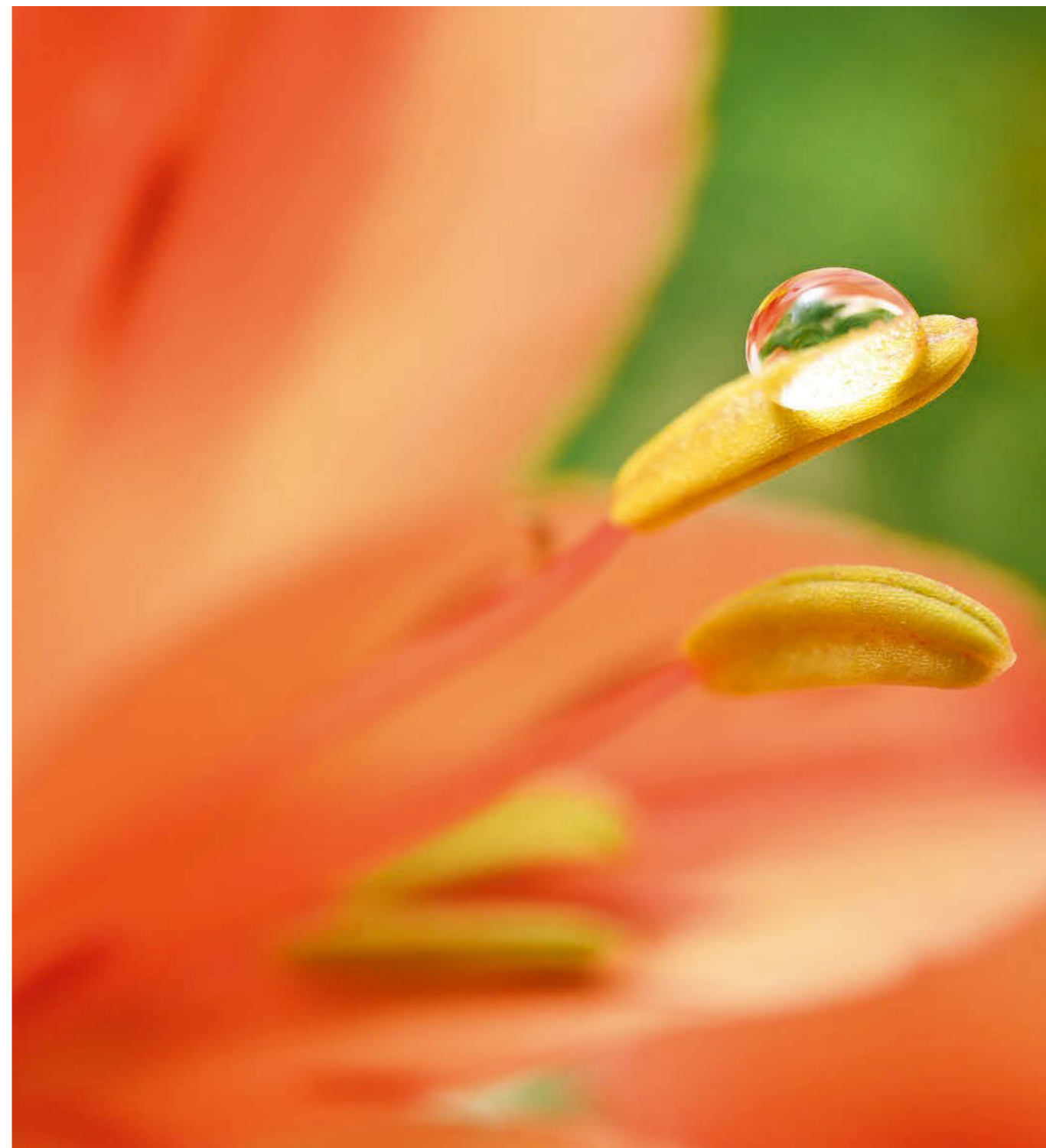
Portable standard micro lens with outstanding rendering performance

NIKKOR Z MC 50mm f/2.8



NIKKOR Z MC 50mm f/2.8

Enter the exciting world of close-up shots. Shoot as close as 0.16 m and capture intricate details at 1× lifesize magnification — ideal for spontaneous snapshots, food photography or exploring the minutiae of daily life. Use it as an everyday lens to enhance foreground/background separation and selective focus. The compact and lightweight body lets you carry it anywhere, to discover different kinds of image expression in diverse scenarios.



STM ED AS M/A E

Lens construction: 10 elements in 7 groups
 Minimum focus distance: 0.16 m/0.53 ft
 Maximum reproduction ratio: 1×
 Filter-attachment size: 46 mm
 Accessories: Hood HN-41 / Case CL-C1



Highly versatile medium-telephoto micro lens covering from close-ups to portraits

NIKKOR Z MC 105mm f/2.8 VR S S-Line

Reveal a tiny unseen world with striking clarity. With a 1:1 reproduction ratio, this lens fills the frame with the edge-to-edge sharpness and overwhelming image quality that is a hallmark of premium S-Line lenses. Utilising its medium-telephoto focal length, maximum aperture of f/2.8, and highly effective VR mechanism, this versatile lens supports a wide variety of subjects and scenes, from the finest details in plants and insects to portraits and landscapes.



NIKKOR Z MC 105mm f/2.8 VR S © Lee Wan Yu

PHOTOGRAPHER: LEE WAN YU

I think of photography as a lifelong experiment that I am blessed to be able to practise every day, much like creativity and storytelling. I love shooting macro images of timepieces as it makes me feel like I am in a secret city; one that watchmakers have silently built, and it is a pleasure to be able to shine a light on the hard work that they have put into the timepieces.

VR	STM	N	ARNEO	ED
AS	M/A	IF	Multi- FS	E

Lens construction: 16 elements in 11 groups
 Minimum focus distance: 0.29 m/0.96 ft
 Maximum reproduction ratio: 1x
 Filter-attachment size: 62 mm
 Accessories: Hood HB-99 / Case CL-C2



Extend your reach, lighten your load

Z TELECONVERTER TC-1.4x
Z TELECONVERTER TC-2.0x

NIKKOR Z 70-200mm f/2.8 VR S + Z TELECONVERTER TC-1.4x



NIKKOR Z 70-200mm f/2.8 VR S + Z TELECONVERTER TC-2.0x



The Z TELECONVERTERS TC-1.4x and TC-2.0x increase the focal length of a compatible lens by 1.4x and 2.0x respectively, extending your telephoto shooting range with the minimal addition of equipment. Even when attached to the main lens, the superior optical and AF/VR performance of the lens is consistently utilised. Superb dust-and-drip-resistant performance is also attained. These teleconverters are highly recommended for anyone who wishes to enjoy telephoto/supertelephoto shooting of wildlife, sports, action, etc.

AS

	TC-1.4x	TC-2.0x
Lens construction	6 elements in 4 groups	8 elements in 5 groups
Minimum focus distance	Same as that of the main lens	
Maximum reproduction ratio	1.4x that of the main lens	2.0x that of the main lens
Accessories	Case CL-C4	
Compatible lens	NIKKOR Z 70-200mm f/2.8 VR S NIKKOR Z 100-400mm f/4.5-5.6 VR S*	

* AF performance may deteriorate depending on the subject, brightness and focus position regardless of the camera body, causing inaccurate focus, slow focusing speed or flashing of the focus point.



High-precision adapters allow use of the vast NIKKOR F lens lineup

Mount Adapter FTZ/FTZ II

AF-S NIKKOR 180-400mm f/4E TC1.4 FL ED VR + Mount Adapter FTZ II © Jeff Pachoud



Gain access to the celebrated legacy of Nikon glass. From the Nikon F in 1959 all the way into the 21st century, Nikon cameras have remained compatible with nearly all NIKKOR F lenses, and with the Mount Adapter FTZ and the new FTZ II that heritage continues. Both models let you keep shooting with the lenses you know and love while also gaining the benefits of the new Z system. The streamlined design of the Mount Adapter FTZ II, without a tripod mounting collar, enables even better operability and expandability for accessories.



Ultra-wide-angle zoom lens for excellent image expression
AF-P DX NIKKOR 10-20mm f/4.5-5.6G VR



Ultra-wide-angle zoom lens for dynamic perspectives
AF-S DX NIKKOR 10-24mm f/3.5-4.5G ED

Wide-angle zoom



AF-P DX NIKKOR 10-20mm f/4.5-5.6G VR © David Chua

DX

PHOTOGRAPHER: DAVID CHUA

During my travels, I enjoy shooting wide-angle landscapes or cityscapes, and environmental portraits, which can capture both the human subject and scenery of my destinations. I prefer to get up close and personal with my photography subjects, when possible, to understand their personal stories and spark my creativity on how to capture an image of their world.

Expand your horizons with this DX-format ultra-wide-angle AF-P DX NIKKOR 10-20mm f/4.5-5.6G VR zoom lens. Created with a compact and portable frame, this lens comes with a suite of innovative NIKKOR technologies, such as the Vibration Reduction system and a quieter autofocus drive for enhanced performance. Experience true optical brilliance shot after shot.

VR SWM AS M/A IF

Lens construction: 14 elements in 11 groups
Minimum focus distance: 0.22 m/0.8 ft
Maximum reproduction ratio: 0.17x
Filter-attachment size: 72 mm
Accessories: Hood HB-81 / Case CL-1015



AF-S DX NIKKOR 10-24mm f/3.5-4.5G ED © Jon Dickson

DX

PHOTOGRAPHER: JON DICKSON

I'm always on the watch for unique atmospheric conditions and weather to turn my next photo into a classic, whether it's lightning, the Northern Lights, or an epic sunset gracing the background. At the heart of my photography is natural beauty. I want others to see that and all the beauty we currently have in this world, and to strive to protect what natural spaces we have remaining.

Explore the extremes of photography with the ultra-wide-angle coverage of this practical zoom lens. With the widest end of 10 mm covering a 109° angle of view, this lens delivers dramatic perspectives to give your photography a creative edge. Close-up shooting capability and minimised distortion also add to its appeal.

SWM ED AS M/A IF

Lens construction: 14 elements in 9 groups
Minimum focus distance: 0.24 m/0.8 ft (AF)
 0.22 m/0.7 ft (MF)
Maximum reproduction ratio: 0.2x
Filter-attachment size: 77 mm
Accessories: Hood HB-23 / Case CL-1118

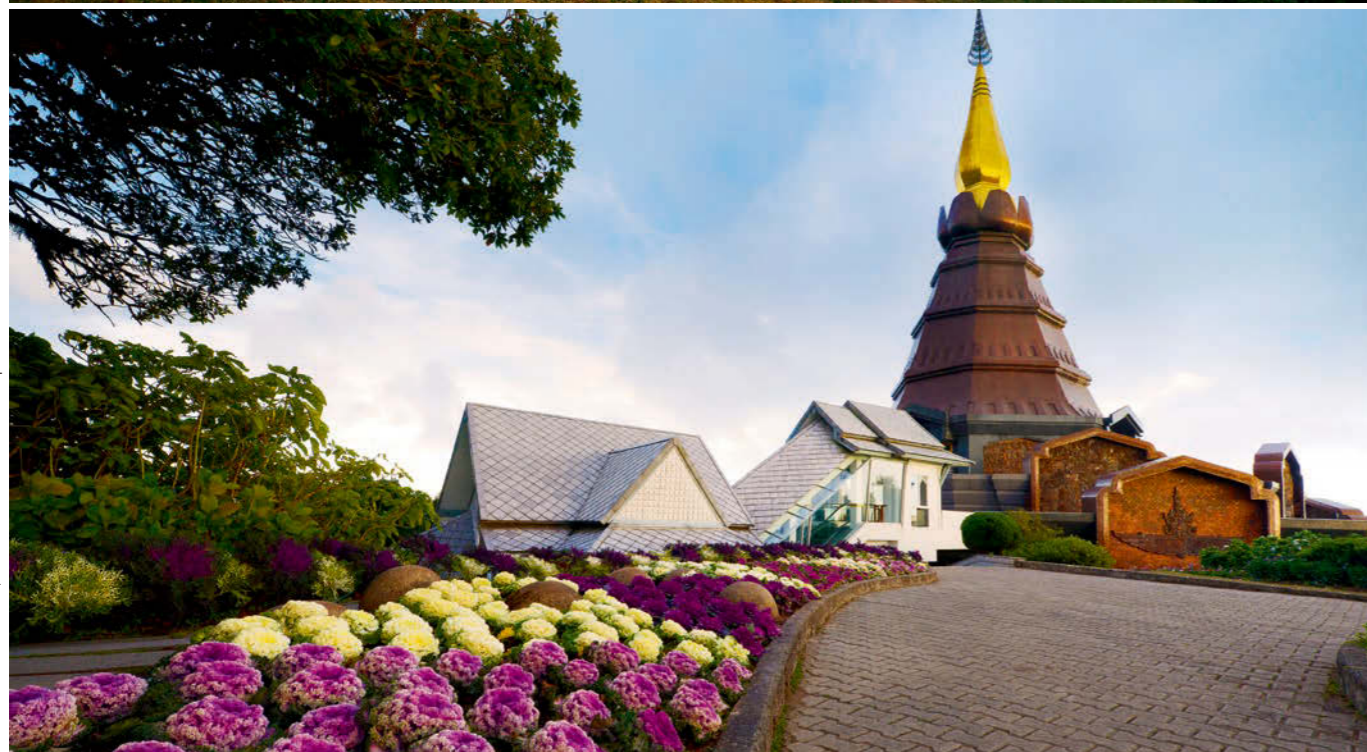
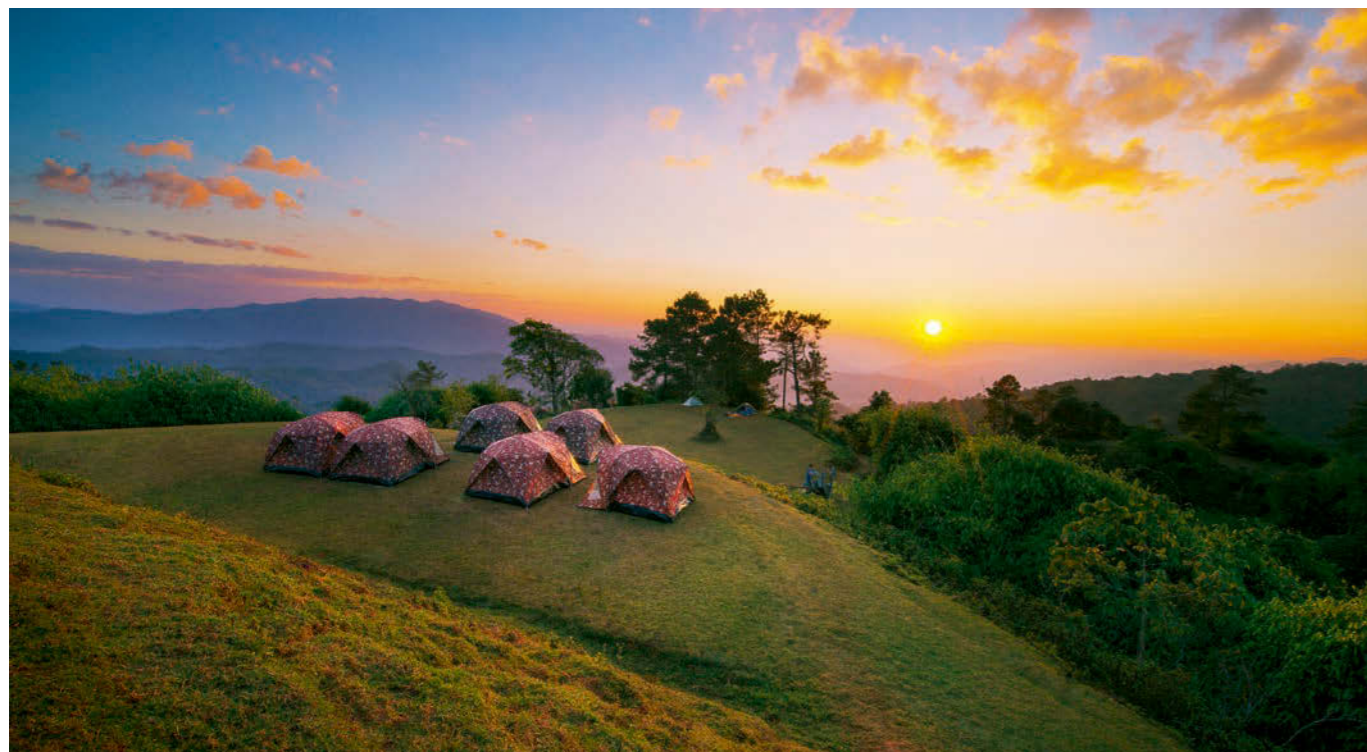


An optical masterpiece: widest at 14 mm with fixed f/2.8

AF-S NIKKOR 14-24mm f/2.8G ED

With a fixed maximum aperture of f/2.8, this award-winning professional lens delivers edge-to-edge sharpness across the frame. Nano Crystal Coat and ED glass ensure outstanding contrast, even in backlit conditions. With its quality and reliability, this is an essential glass for professional photographers everywhere.

Wide-angle zoom



AF-S NIKKOR 14-24mm f/2.8G ED © Preecha Sakthongphantharak

PHOTOGRAPHER: PREECHA SAKHONPHANTHARAK

I believe that photography is meant to evoke emotion. I aim to create a sense of wonder and amazement about the natural world through my work. I am constantly on the lookout for new, amazing places that will encourage people to venture out, to travel and discover new sights through their lens.



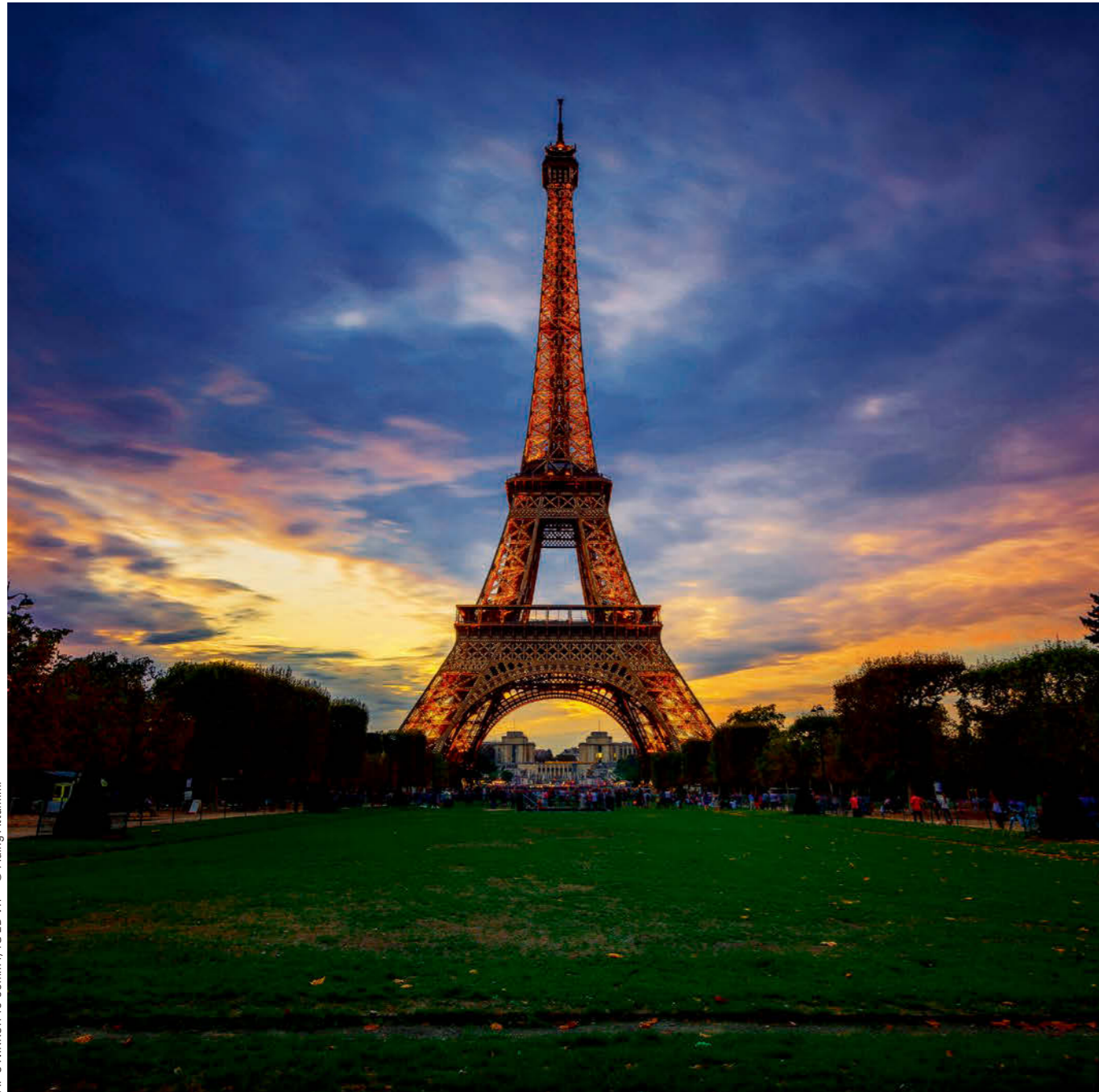
SWM N ED AS M/A IF

Lens construction: 14 elements in 11 groups
Minimum focus distance: 0.28 m/0.90 ft
(with focal length 18-24 mm)
Maximum reproduction ratio: 0.14x
Filter-attachment size: Filter cannot be attached
Accessories: Built-in hood / Case CL-M3



Sharp, ultra-wide-angle zoom with VR
AF-S NIKKOR 16-35mm f/4G ED VR

Wide-angle zoom



AF-S NIKKOR 16-35mm f/4G ED VR ©ADING ATTAMIMI

PHOTOGRAPHER: ADING ATTAMIMI

As a travel photographer dabbling in both landscape and street photography, I always try to inspire people to travel the world through my work. I wish that the world, with its abundance of sights to behold, could be captured in a single frame. To me, most of the work in creating an image comes as part of the necessary preparations before releasing the shutter. This preparation work is just as important to me as the final outcome of the image.

This versatile ultra-wide-angle zoom covers a broad range, with Vibration Reduction (VR) that provides an effect equivalent to a shutter speed 2.5 stops* faster to enable stable handheld images at slower shutter speeds in places such as interiors and night scenes. Ideal for travel and documentary work.

* Based on CIPA Standard. This value is achieved when attached to an FX-format D-SLR camera, with zoom set at the maximum telephoto position.

VR	SWM	N	ED	AS	M/A	IF	E
Lens construction: 17 elements in 12 groups							
Minimum focus distance: 0.29 m / 1.0 ft (at a focal length of 16 mm or 35 mm) 0.28 m / 0.9 ft (at a focal length between 20 mm and 28 mm)							
Maximum reproduction ratio: 0.25x							
Filter-attachment size: 77 mm							
Accessories: Hood HB-23 / Case CL-1120							



A versatile wide-angle to standard view FX-format zoom lens
AF-S NIKKOR 18-35mm f/3.5-4.5G ED



AF-S NIKKOR 18-35mm f/3.5-4.5G ED ©LOW CHIN SIANG

PHOTOGRAPHER: LOW CHIN SIANG

I love to shoot wide-angle portraits that tell the story of a subject in a place. Though my company focuses on commercial and wedding photography and cinematography, my personal passion lies in travel photography as I find joy in capturing landscapes and portraits.

Shoot beautiful wide-angle architectural shots, landscapes, group portraits and more; then zoom in for a natural field of view that is slightly wider than what we see with our eyes. The minimum focus distance is as close as 0.28 m from the subject. And since the AF-S NIKKOR 18-35mm f/3.5-4.5G ED is powered by Nikon's Silent Wave Motor (SWM) for ultra-fast, ultra-quiet autofocus, it's an ideal choice for video applications.

SWM	ED	AS	M/A	IF
Lens construction: 12 elements in 8 groups				
Minimum focus distance: 0.28 m/0.92 ft				
Maximum reproduction ratio: 0.2x				
Filter-attachment size: 77 mm				
Accessories: Hood HB-66 / Case CL-1118				



Normal zoom lens with superior depiction and high mobility
AF-S DX NIKKOR 16-80mm f/2.8-4E ED VR

Normal zoom



AF-S DX NIKKOR 16-80mm f/2.8-4E ED VR © Hideyuki Motegi

Remarkably lightweight 5x normal zoom lens with a maximum aperture of f/2.8 at the wide-angle end. Advances such as Nano Crystal Coat, fluorine coat and an electromagnetic diaphragm are incorporated — all firsts for DX-format lenses. Vibration Reduction (VR) provides an effect of 4.0 stops*. Utilising its superb rendering and mobility, capture amazing moments anywhere.

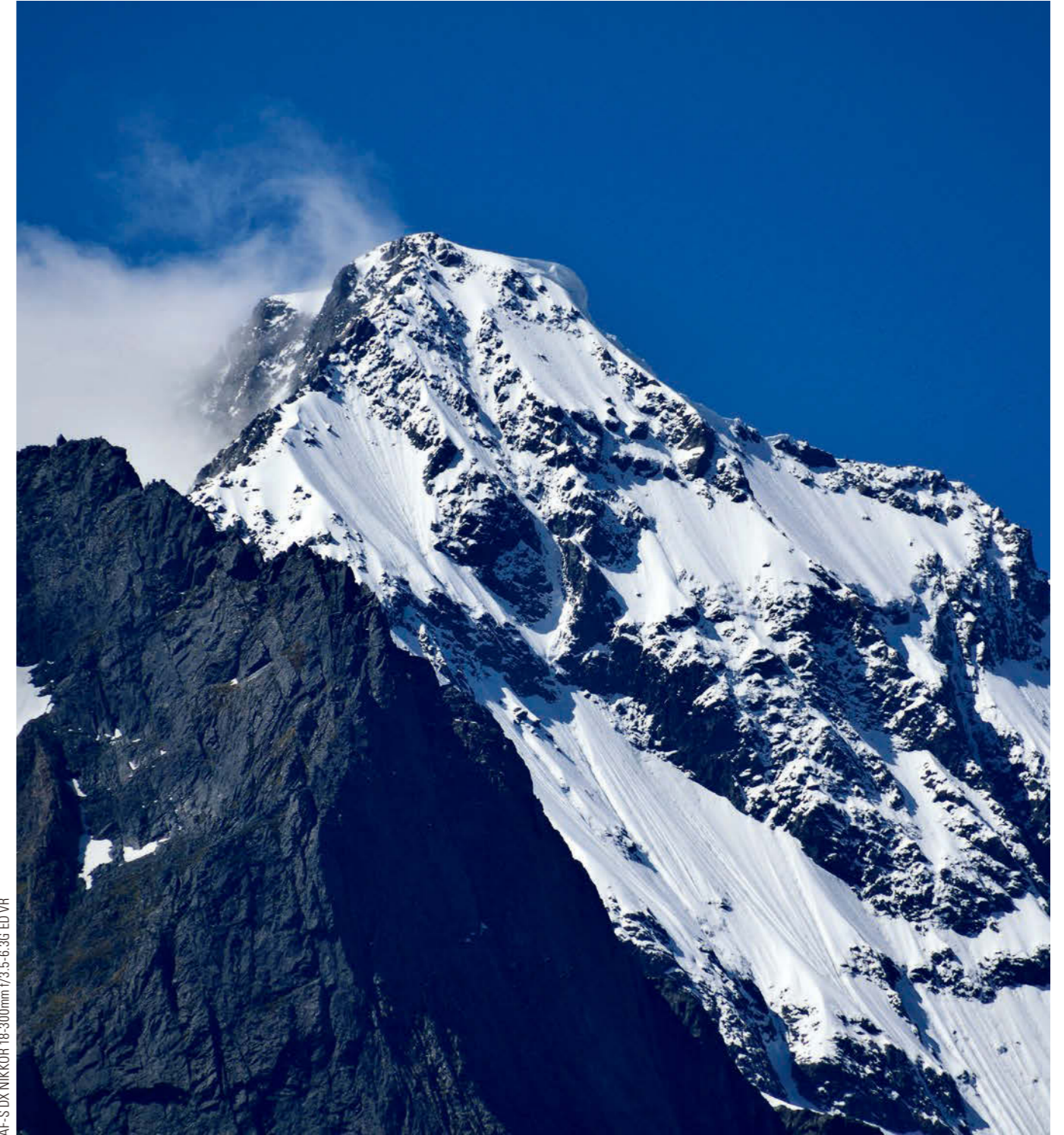
* Based on CIPA Standard. This value is achieved when attached to a DX-format D-SLR camera, with zoom set at the maximum telephoto position.

VR SWM N ED AS M/A IF E DX

Lens construction: 17 elements in 13 groups
 Minimum focus distance: 0.35 m/1.15 ft
 Maximum reproduction ratio: 0.22x
 Filter-attachment size: 72 mm
 Accessories: Hood HB-75 / Case CL-1218 (optional)



Compact and lightweight lens covering from wide to super-telephoto
AF-S DX NIKKOR 18-300mm f/3.5-6.3G ED VR



AF-S DX NIKKOR 18-300mm f/3.5-6.3G ED VR

The AF-S DX NIKKOR 18-300mm f/3.5-6.3G ED VR is a 16.7x high-power zoom, 18-300 mm lens (angle of view equivalent to that of a 27-450 mm lens in 35mm [135] format), that covers a broad range of focal lengths, from wide-angle to super-telephoto. It is smaller and lighter for greater portability despite its support for a wide range of angles of view, making it a single lens that even those new to digital SLR cameras can use to enjoy capturing a wide variety of subjects, such as everyday snapshots, portraits and landscapes.

VR SWM ED AS A-M IF DX

Lens construction: 16 elements in 12 groups
 Minimum focus distance: 0.48 m/1.6 ft
 Maximum reproduction ratio: 0.29x
 Filter-attachment size: 67 mm
 Accessories: Hood HB-39 (optional) / Case CL-1018 (optional)



Fast normal zoom lens with an aspherical ED glass element

AF-S NIKKOR 24-70mm f/2.8E ED VR

An aspherical ED glass element — a first for NIKKOR lenses, ED glass and HRI lens elements plus Nano Crystal Coat are employed to achieve remarkably high optical performance. Evolved Vibration Reduction (VR) provides an effect equivalent to a shutter speed 4.0 stops* faster in NORMAL mode. Other notable features include an electromagnetic diaphragm mechanism, fluorine coat, and highly durable body.

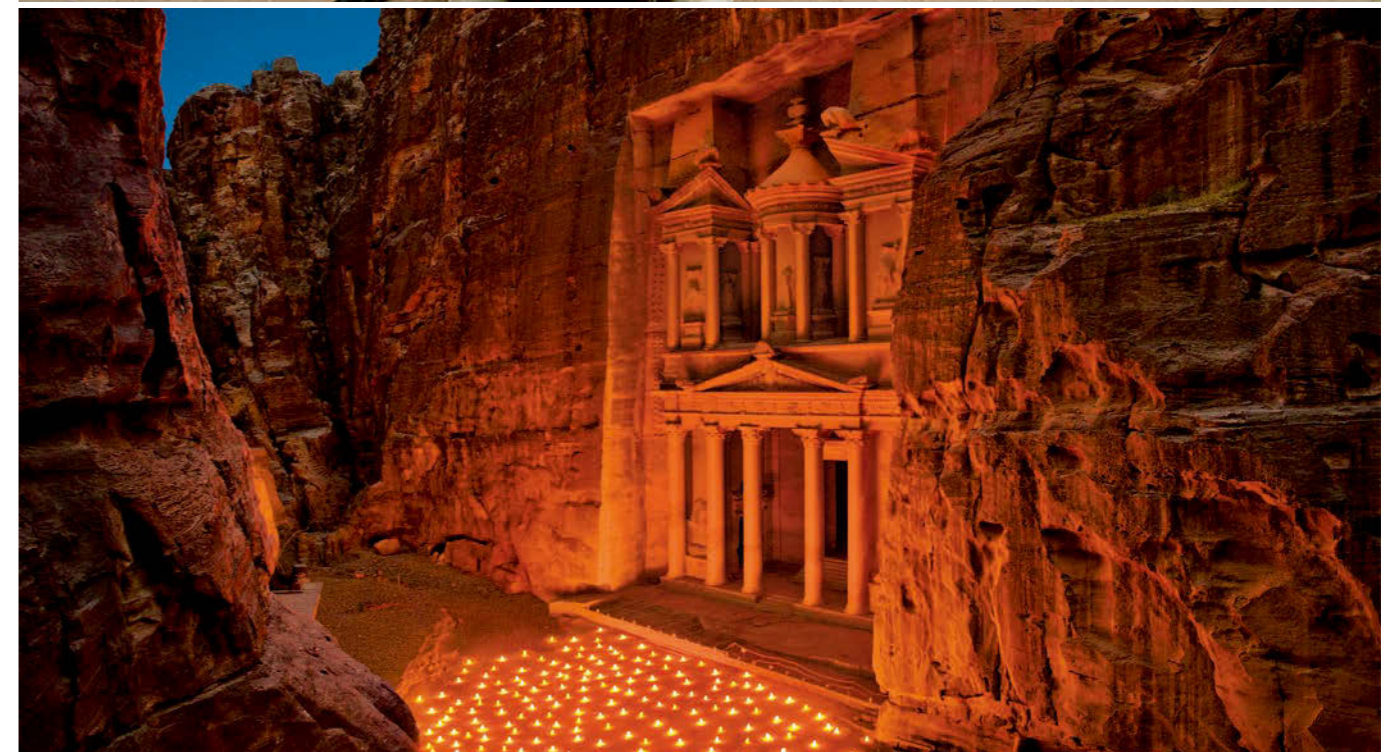
Normal zoom



AF-S NIKKOR 24-70mm f/2.8E ED VR © Dany Eid

PHOTOGRAPHER: DANY EID

Each image I shoot is not considered a subject, but a story that I capture with my lens. My spark of passion for photography was set off when I left my hometown to explore the Middle East. Fuelled by the huge diversity the region had to offer, along with my melancholy for my hometown, I was inspired to document my personal experiences through photography.



VR SWM E N AS ED AS HRI M/A IF

Lens construction: 20 elements in 16 groups
Minimum focus distance: 0.38 m/1.25 ft (at 35-50 mm focal length), 0.41 m/1.35 ft (at 24, 28, 70 mm focal lengths)
Maximum reproduction ratio: 0.28x
Filter-attachment size: 82 mm
Accessories: Hood HB-74 / Case CL-M3

* Based on CIPA Standard. This value is achieved when attached to an FX-format D-SLR camera, with zoom set at the maximum telephoto position.



Practical standard zoom lens with VR and Nano Crystal Coat
AF-S NIKKOR 24-120mm f/4G ED VR

Normal zoom



AF-S NIKKOR 24-120mm f/4G ED VR © Elliot Lee

PHOTOGRAPHER: ELLIOT LEE

Every picture has a story to tell, a story in which I try to immerse my audience — taking people into a scene and allowing them to feel as if they are right there in that very moment. My photography journey began with shooting landscapes and wide spaces, which still remain my favourite subjects till this day, born out of a love for sharing my travels with others.

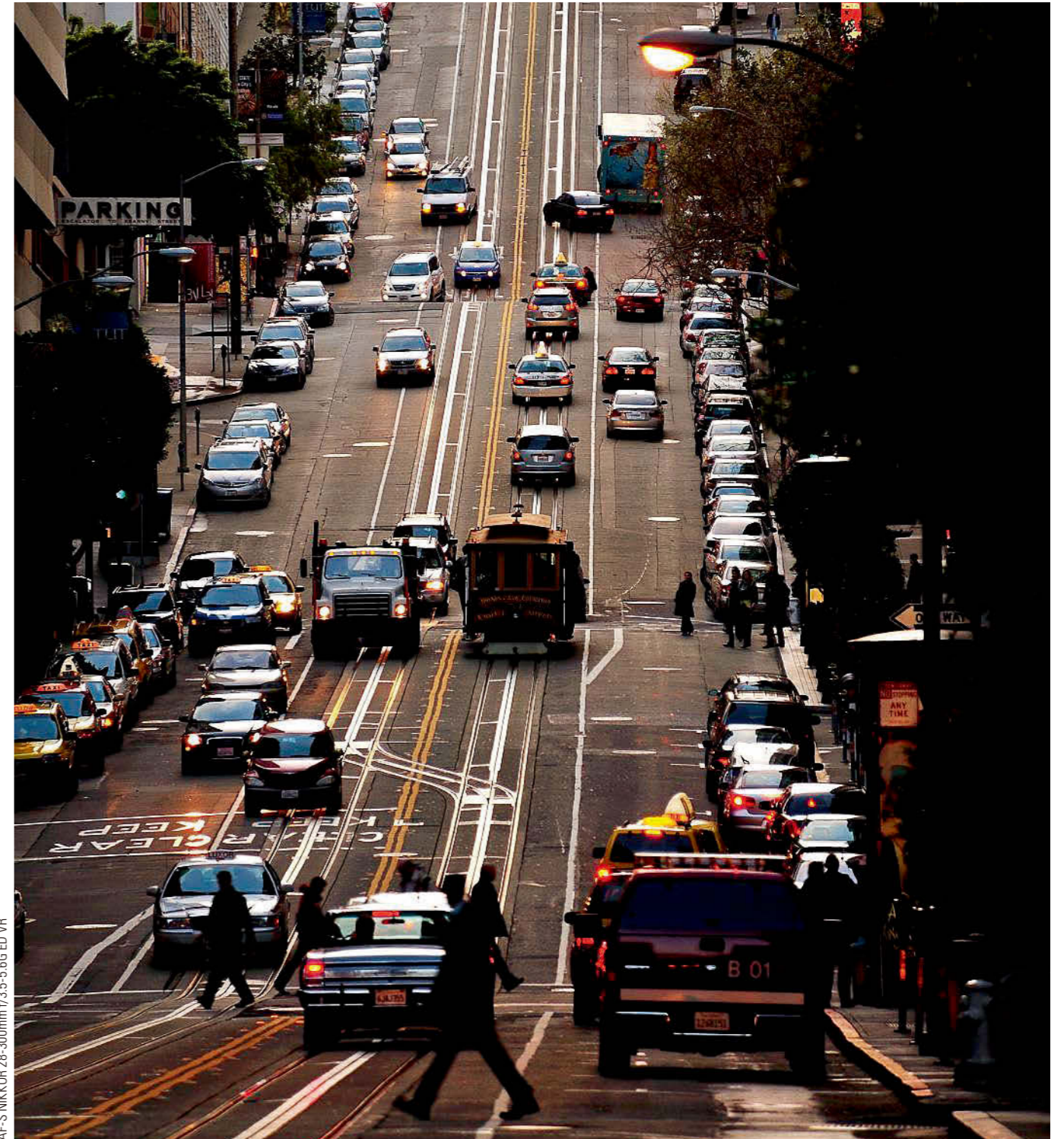
This versatile 5x zoom lens delivers stunning image quality at any aperture or focal length, while the Nano Crystal Coat reduces ghosting and flare effects. Built-in Vibration Reduction (VR) provides an effect equivalent to a shutter speed 3.5 stops* faster. A standard zoom lens of exceptional utility and value for FX-format users.

VR SWM N ED AS M/A IF

Lens construction: 17 elements in 13 groups
Minimum focus distance: 0.45 m/1.5 ft
Maximum reproduction ratio: 0.24x
Filter-attachment size: 77 mm
Accessories: Hood HB-53 / Case CL-1218



Versatile, high-powered 10.7x zoom with VR
AF-S NIKKOR 28-300mm f/3.5-5.6G ED VR



AF-S NIKKOR 28-300mm f/3.5-5.6G ED VR

A powerful zoom lens optimised for FX-format cameras, offering stunning sharpness over a broad focal length range while maintaining an f/5.6 aperture at the telephoto end. Built-in Vibration Reduction (VR) provides an effect of 3.5 stops* A genuinely versatile zoom lens for travel and diverse outdoor applications.

* Based on CIPA Standard. This value is achieved when attached to an FX-format D-SLR camera, with zoom set at the maximum telephoto position.

VR SWM ED AS M/A IF

Lens construction: 19 elements in 14 groups
Minimum focus distance: 0.5 m/1.6 ft
Maximum reproduction ratio: 0.32x
Filter-attachment size: 77 mm
Accessories: Hood HB-50 / Case CL-1120



Fast and lightweight telephoto zoom lens with superior image quality
AF-S NIKKOR 120-300mm f/2.8E FL ED SR VR

This telephoto zoom lens possesses stunning image rendering properties with the quality and resolution one might expect from a 300 mm prime. One SR lens, one ED glass, and two fluorite lens elements work together for brilliantly detailed shots with exceptional colour rendering. Ghosting and flaring are effectively minimised by the innovative ARNEO Coat and Nano Crystal Coat, for sharp, clear images even if a light source is in the frame. Superb AF performance as well as VR function with SPORT mode option reliably support pro sports photography.



VR SWM N ARNEO FL SR
 ED M/A A/M IF E

Lens construction: 25 elements in 19 groups
 Minimum focus distance: 2.0 m/6.6 ft
 Maximum reproduction ratio: 0.16x
 Filter-attachment size: 112 mm
 Accessories: Hood HK-41 / Case CL-C2

Telephoto zoom

AF-S NIKKOR 120-300mm f/2.8E FL ED SR VR © Rodi Mar



Agile and reliable, fast telephoto zoom lens for professionals

AF-S NIKKOR 70-200mm f/2.8E FL ED VR

This fast f/2.8 telephoto zoom with reduced weight enables highly agile shooting in diverse situations. Movable parts and other sections are sealed to maximise dust- and drip-resistant performance. Further enhanced optical performance is realised with a newly developed optical system and the adoption of fluorite, ED glass, HRI lens elements and Nano Crystal Coat. The VR system that provides an effect equivalent to a shutter speed 4.0 stops* faster in NORMAL mode also features SPORT mode. AF drive and AF tracking performance have been enhanced, while stable AE control is obtained with the adoption of an electromagnetic diaphragm mechanism.



Telephoto zoom

AF-S NIKKOR 70-200mm f/2.8E FL ED VR © Kyaw Thar

PHOTOGRAPHER: KYAW THAR

My first foray into photography started in 2001 with a Nikon F60 accompanying me as I did travel photography and took part in photo competitions. Inspired by a passion for the snow-capped mountains in the Kachin State of Northern Myanmar, I subsequently moved on to a Nikon D3X and a D4S to pursue my love for landscape and mountain photography as a freelancer. I want to spend the rest of my life exploring untouched nature, trekking mountains and capturing the stunning views that surround me.

VR SWM N FL ED
HRI M/A A/M IF E

Lens construction: 22 elements in 18 groups
Minimum focus distance: 1.1 m/3.61 ft
Maximum reproduction ratio: 0.21x
Filter-attachment size: 77 mm
Accessories: Hood HB-78 / Case CL-M2

* Based on CIPA Standard. This value is achieved when attached to an FX-format D-SLR camera, with zoom set at the maximum telephoto position.



Telephoto zoom lens with Nano Crystal Coat and VR
AF-S NIKKOR 70-200mm f/4G ED VR



AF-S NIKKOR 70-200mm f/4G ED VR © Corey Rich

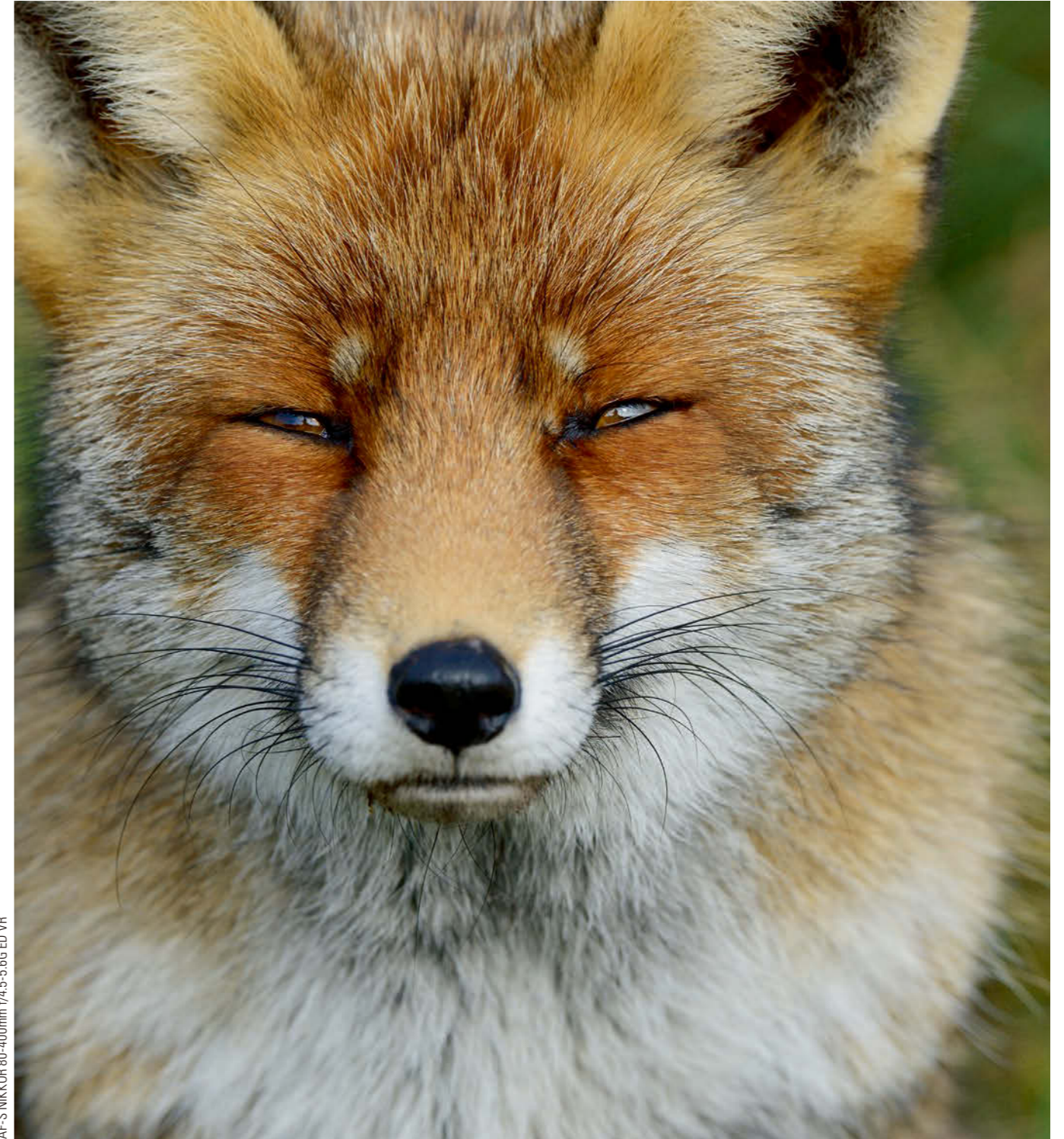
Telephoto zoom

This carry-anywhere telephoto zoom lens is useful across a wide general range of shooting scenarios such as sports and snapshots. Its Nano Crystal Coat effectively reduces ghost and flare while its high-performance Vibration Reduction (VR) minimises the effects of camera shake, providing an effect equivalent to a shutter speed 4.0 stops* faster.

VR SWM N ED HRI A/M IF
Lens construction: 20 elements in 14 groups
Minimum focus distance: 1.0 m/3.28 ft
Maximum reproduction ratio: 0.27x
Filter-attachment size: 67 mm
Accessories: Hood HB-60 / Case CL-1225 / Tripod Collar Ring RT-1 (optional)



Long-range, 400 mm zoom lens with VR
AF-S NIKKOR 80-400mm f/4.5-5.6G ED VR



AF-S NIKKOR 80-400mm f/4.5-5.6G ED VR

This 5x telephoto zoom is ideal for shooting sports, birds, aircraft and landscapes. Its superior optical performance is due in part to its one Super ED and four ED glass elements, as well as its Nano Crystal Coat. Vibration Reduction (VR) is integrated to offer an effect equivalent to a shutter speed 4.0 stops* faster.

* Based on CIPA Standard. This value is achieved when attached to an FX-format D-SLR camera, with zoom set at the maximum telephoto position.

VR SWM N ED M/A A/M IF
Lens construction: 20 elements in 12 groups
Minimum focus distance: 1.75 m/5.74 ft (AF); 1.5 m/4.92 ft (MF)
Maximum reproduction ratio: 0.17x (AF); 0.19x (MF)
Filter-attachment size: 77 mm
Accessories: Hood HB-65 / Case CL-M2



Super-telephoto zoom lens with superb optical performance and VR
AF-S NIKKOR 200-500mm f/5.6E ED VR



Telephoto zoom

AF-S NIKKOR 200-500mm f/5.6E ED VR © Shaun Ho

PHOTOGRAPHER: SHAUN HO

As a former national athlete, nothing gives me greater joy than capturing the essence of sportsmanship through images. With the AF-S NIKKOR 200-500mm f/5.6E ED VR, I am able to get up close and personal with the athletes that I am tasked to photograph and create an image that spectators would not be able to otherwise witness from the stands.

ED glass elements achieve superior optical performance with minimal chromatic aberration at all zoom positions. The Vibration Reduction (VR) system with an effect of 4.5 stops* offers SPORT mode to effectively capture fast-moving subjects. Stable AE control is ensured even during high-speed continuous shooting with an electromagnetic diaphragm mechanism.

* Based on CIPA Standard. This value is achieved when attached to an FX-format D-SLR camera, with zoom set at the maximum telephoto position.

VR SWM ED M/A IF E

Lens construction: 19 elements in 12 groups
 Minimum focus distance: 2.2 m/7.22 ft
 Maximum reproduction ratio: 0.22x
 Filter-attachment size: 95 mm
 Accessories: Hood HB-71 / Case CL-1434



Fast and quiet telephoto lens in a compact form
AF-P DX NIKKOR 70-300mm f/4.5-6.3G ED VR



AF-P DX NIKKOR 70-300mm f/4.5-6.3G ED VR © Tam Bui

PHOTOGRAPHER: TAM BUI

I like to tell the stories of people around me. There are some things that cannot be expressed simply with words, so I use pictures to do so. Through my photography, I like to show not only the beauty of people, but also their emotions from deep within.

70-300 mm super-telephoto zoom power brings faraway subjects within reach. Capture sports, wildlife, concerts, landmarks and more with phenomenal clarity and precision. Superb optics and a telephoto field of view are great for stills and HD video. Ultra-fast, near silent autofocus is powered by stepping motors. VR image stabilisation ensures sharp photos, steady videos and enhances low-light capabilities.

VR STM ED M/A IF

Lens construction: 14 elements in 10 groups
 Minimum focus distance: 1.1 m/3.7 ft
 Maximum reproduction ratio: 0.22x
 Filter-attachment size: 58 mm
 Accessories: Hood HB-77 (optional) / Case CL-1020 (optional)

DX



A super-telephoto zoom lens with a built-in 1.4x teleconverter for superior agility and performance

AF-S NIKKOR 180-400mm f/4E TC1.4 FL ED VR

Professional super-telephoto zoom with Nikon's first built-in selectable 1.4x teleconverter. Advanced optical design with 8 ED glass elements, a fluorite lens element and Nano Crystal Coat produces unwavering image quality. Blazing fast subject acquisition and locked-on tracking. Lightweight, durable construction with advanced weather sealing, internal focus and Nikon's nonstick fluorine coat. Next-generation Vibration Reduction (VR) system that starts immediately and includes SPORT mode.



Telephoto zoom

AF-S NIKKOR 180-400mm f/4E TC1.4 FL ED VR © Richard Peters

VR SWM N FL ED M/A A/M IF E

Lens construction: 27 elements in 19 groups
Minimum focus distance: 2.0 m/6.6 ft
Maximum reproduction ratio: 0.25x (without built-in teleconverter at 400 mm)
Filter-attachment size: 40.5 mm
Accessories: Hood HK-41/ Case CL-L2



Compact, ultra-wide-angle lens for elaborate expression

AF-S NIKKOR 20mm f/1.8G ED



Fixed focal length
AF-S NIKKOR 20mm f/1.8G ED © Martha Suherman

PHOTOGRAPHER: MARTHA SUHERMAN

Photography has been my passion since the year 2000. I love storytelling with my work, and I'm constantly challenging myself to reach new levels of creativity. Photography enables me to share what I envision in my mind and translate it into visual feats with the help of my camera and my lens. I particularly love landscape and fashion photography, and sometimes a mix of both to create a unique image.

This 20 mm lens enables photographic expression utilising the shallow depth of field achieved at the maximum aperture of f/1.8. The latest optical design technology delivers high resolution and superb point-image reproduction while minimising chromatic aberration. ED glass elements and Nano Crystal Coat ensure superior image quality.

SWM N ED AS M/A RF

Lens construction: 13 elements in 11 groups
Minimum focus distance: 0.2 m/0.66 ft
Maximum reproduction ratio: 0.23x
Filter-attachment size: 77 mm
Accessories: Hood HB-72 / Case CL-1015



Superb optics with fast f/1.4 maximum aperture for amazing bokeh

AF-S NIKKOR 24mm f/1.4G ED



AF-S NIKKOR 24mm f/1.4G ED

The greatest advantage of this versatile wide-angle lens is its amazingly beautiful bokeh at f/1.4 while covering an 84° angle of view with FX-format D-SLR cameras. Its optical design reveals refined detail with minimal aberration. In addition, Nano Crystal Coat effectively reduces ghost and flare effects in harsh lighting conditions.

SWM N ED AS M/A RF

Lens construction: 12 elements in 10 groups
Minimum focus distance: 0.25 m/0.82 ft
Maximum reproduction ratio: 0.18x
Filter-attachment size: 77 mm
Accessories: Hood HB-51 / Case CL-1118



Compact and light, fast wide-angle lens with high image quality

AF-S NIKKOR 24mm f/1.8G ED



Fixed focal length

AF-S NIKKOR 24mm f/1.8G ED © Yves Paternoster

A fast, compact, lightweight, wide-angle prime lens that can create natural blur utilising the maximum aperture of f/1.8. Employing Nano Crystal Coat, ED glass elements, and aspherical lens elements delivers superior optical performance with minimal ghost and flare effect and chromatic aberration. The latest optical design technologies achieve superior resolution to the edges of the frame. Ideal for shooting wide landscapes.

SWM N ED AS M/A RF

Lens construction: 12 elements in 9 groups
Minimum focus distance: 0.23 m/0.75 ft
Maximum reproduction ratio: 0.2x
Filter-attachment size: 72 mm
Accessories: Hood HB-76 / Case CL-1015



FX-format wide-angle lens perfect for portraits

AF-S NIKKOR 28mm f/1.4E ED



AF-S NIKKOR 28mm f/1.4E ED © Marko Marinkovic

With a maximum aperture of f/1.4, this lens delivers outstanding performance, even in low-light conditions. The two ED glass elements and three aspherical lens elements reduce chromatic aberrations and distortions in the AF-S NIKKOR 28mm f/1.4E ED, giving you edge-to-edge sharpness and clarity in every shot.

SWM N ED AS
M/A RF E

Lens construction: 14 elements in 11 groups
Minimum focus distance: 0.28 m/0.92 ft
Maximum reproduction ratio: 0.17x
Filter-attachment size: 77 mm
Accessories: Hood HB-83 / Case CL-1118



Fast f/1.8 wide-angle lens with exquisite sharpness and quality bokeh

AF-S NIKKOR 28mm f/1.8G



Fixed focal length

AF-S NIKKOR 28mm f/1.8G

Bring a dramatic wide-angle perspective to your still and HD video shooting. The AF-S NIKKOR 28mm f/1.8G's fast maximum aperture lets you create in nearly any light — dusk to dawn, indoors or out — and offers outstanding depth-of-field control. Nikon's exclusive Nano Crystal Coat virtually eliminates the ghosting and flare seen with some wide-angle lenses, for improved clarity and contrast. Impressive on both FX- and DX-format cameras, the AF-S NIKKOR 28mm f/1.8G excels with landscapes, architecture, group shots, travel and more.

SWM N AS M/A RF

Lens construction: 11 elements in 9 groups
Minimum focus distance: 0.25 m/0.82 ft
Maximum reproduction ratio: 0.22x
Filter-attachment size: 67 mm
Accessories: Hood HB-64 / Case CL-0915



Wide-angle f/1.4 prime with stunning clarity

AF-S NIKKOR 35mm f/1.4G



AF-S NIKKOR 35mm f/1.4G

The legendary manual-focus Nikkor 35mm f/1.4 has now been upgraded to an AF-S lens with the latest digital technology. This lens achieves a remarkable level of coma aberration correction in order to deliver stunning images, even at a wide-open aperture. Nano Crystal Coat drastically reduces ghost and flare effects when shooting wide-angle, where the possibility of these effects can increase. A great choice for nature, landscape, night scenes and astrophotography.

SWM N AS M/A RF

Lens construction: 10 elements in 7 groups
Minimum focus distance: 0.3 m/0.98 ft
Maximum reproduction ratio: 0.2x
Filter-attachment size: 67 mm
Accessories: Hood HB-59 / Case CL-1118



Compact, fast FX-format 35mm prime lens that excels in high resolution
AF-S NIKKOR 35mm f/1.8G ED



AF-S NIKKOR 35mm f/1.8G ED © George Lai

Fixed focal length

PHOTOGRAPHER: GEROGE LAI

I never get bored of taking landscape or street photography, because every moment is unique, even if the location or time frame is the same. Through my camera and lens, I get to see the world from a different view, every time. To me, photography is the art of using the right equipment to control light, shadows, tone and atmosphere to compose that perfect picture. With its fast-focusing motor, the AF-S NIKKOR 35mm f/1.8G ED enables me to point, shoot and capture the best views, without fear of losing a single moment.

On an FX-format Nikon camera, a 35 mm lens approximates the angle of view we see with our eyes, an ideal perspective for so many photo and video applications. The AF-S NIKKOR 35mm f/1.8G ED combines that natural perspective (52.5 mm equivalent on DX-format cameras) with an f/1.8 maximum aperture for outstanding depth of field control and low-light performance — all in a compact, lightweight design. Capture vibrant natural looking photos and videos with softly blurred backgrounds, even in low light.

SWM ED AS M/A RF

Lens construction: 11 elements in 8 groups
Minimum focus distance: 0.25 m/0.82 ft
Maximum reproduction ratio: 0.24x
Filter-attachment size: 58 mm
Accessories: Hood HB-70 / Case CL-0915



Strikingly crisp, f/1.8 prime for DX users
AF-S DX NIKKOR 35mm f/1.8G



AF-S DX NIKKOR 35mm f/1.8G © Melanie Acevedo

DX

SWM AS M/A RF

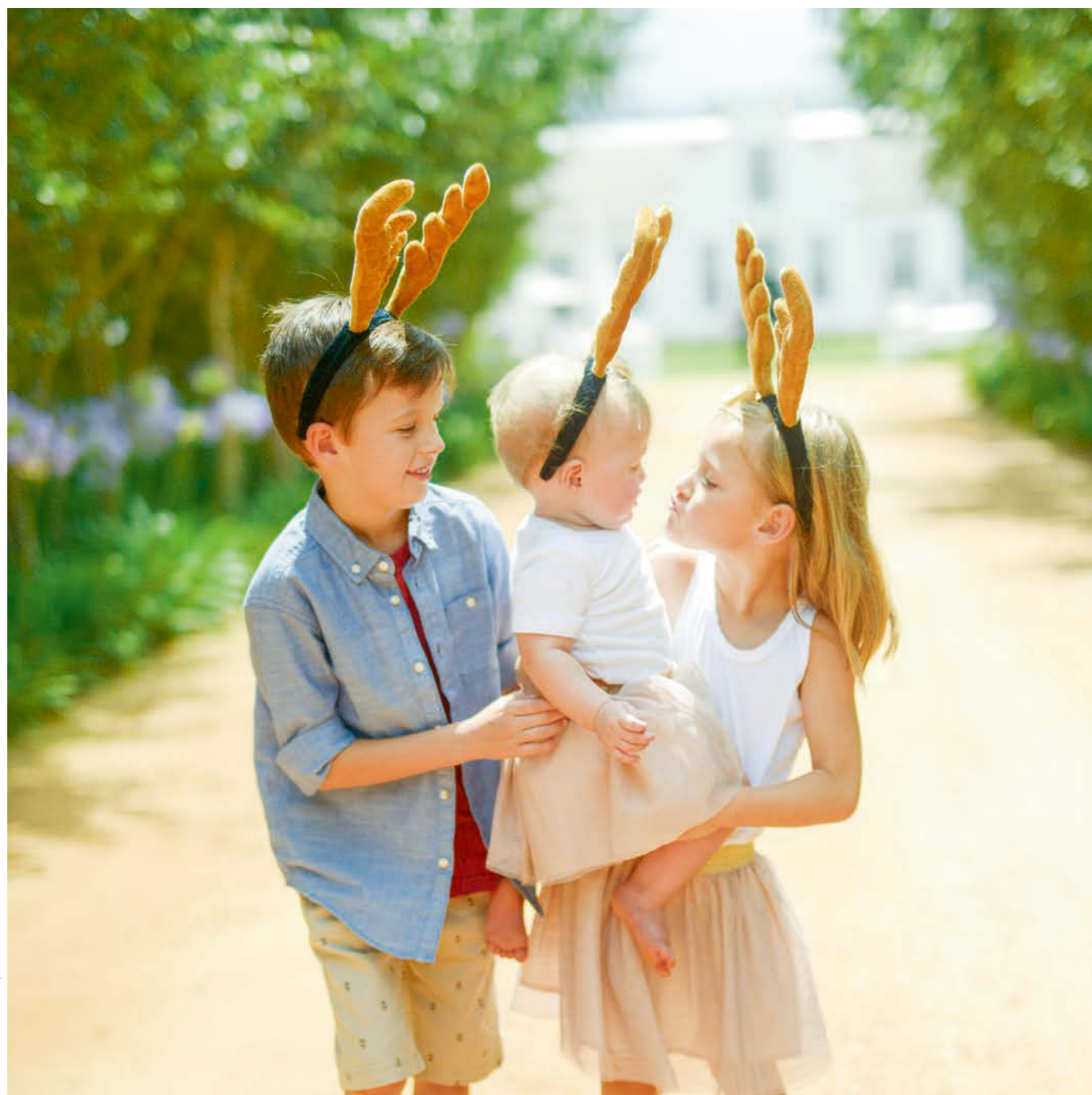
Lens construction: 8 elements in 6 groups
Minimum focus distance: 0.3 m/0.98 ft
Maximum reproduction ratio: 0.16x
Filter-attachment size: 52 mm
Accessories: Hood HB-46 / Case CL-0913

Optimised for DX-format D-SLR cameras, this lens delivers both the superb sharpness and smooth bokeh you expect from a prime lens, making it particularly suited for portraits. The fast aperture ensures more photo opportunities in low light.



Ultra-fast maximum aperture for exquisite sharpness and bokeh

AF-S NIKKOR 50mm f/1.4G



Fixed focal length
AF-S NIKKOR 50mm f/1.4G © Inecke De Kock

PHOTOGRAPHER: INECKE DE KOCK

I relate photography to telling a story of love and passion for life, a style which I have made my own through my work. I believe that each person has a natural beauty about them, and my vision is to highlight that beauty and draw it out in my pictures. Having studied event management specialising in wedding coordination, I appreciate the need for finer details in special occasions to complete a picture.

Expect outstanding image quality, great sharpness and high contrast at any aperture or focus distance. An ultra-fast f/1.4 maximum aperture not only creates attractive bokeh with its rounded 9-blade diaphragm, but also offers great low-light performance. Ideal for portraits, landscapes, travel and more.

SWM M/A

Lens construction: 8 elements in 7 groups
Minimum focus distance: 0.45 m/1.5 ft
Maximum reproduction ratio: 0.15x
Filter-attachment size: 58 mm
Accessories: Hood HB-47 / Case CL-1013



Strikingly crisp, compact and approachable prime

AF-S NIKKOR 50mm f/1.8G



AF-S NIKKOR 50mm f/1.8G © Nelson Ng

PHOTOGRAPHER: NELSON NG

Photographing people has always been a passion of mine. From portraiture to sports and events, taking pictures of the people around me is my way of seeing the world from various unique perspectives. Documenting culture in the region is an important means of preserving and sharing the rich heritage and traditional arts of Asia for future generations to enjoy.

Remarkably light and compact body considering the fast f/1.8 maximum aperture and built-in SWM that enables smooth AF. This lens features a newly designed optical system including an aspherical lens element, offering stunning sharpness and quality bokeh. A great choice for portraits, still-life shots, low-light scenes and more.

SWM AS M/A

Lens construction: 7 elements in 6 groups
Minimum focus distance: 0.45 m/1.48 ft
Maximum reproduction ratio: 0.15x
Filter-attachment size: 58 mm
Accessories: Hood HB-47 / Case CL-1013



Fast lens with overwhelming rendering performance

AF-S NIKKOR 58mm f/1.4G



Fixed focal length

AF-S NIKKOR 58mm f/1.4G © Hideoyuki Motegi

This prime lens achieves impressive scene description with high resolution and smooth, beautiful bokeh. Despite the fast aperture, sharp, high-contrast images of distant subjects can be captured even at the maximum aperture. In addition, elaborately designed bokeh characteristics depict subjects attractively, resulting in images with natural depth.

SWM N AS M/A

Lens construction: 9 elements in 6 groups
Minimum focus distance: 0.58 m/1.9 ft
Maximum reproduction ratio: 0.13x
Filter-attachment size: 72 mm
Accessories: Hood HB-68 / Case CL-1015



Medium-range telephoto lens optimal for portraits

AF-S NIKKOR 85mm f/1.4G



AF-S NIKKOR 85mm f/1.4G © Kelvin Chan

PHOTOGRAPHER: KELVIN CHAN

Photography is all about sharing. As the world has so much more to offer than what most of us have seen or experienced, I like to capture these images and share them for everyone to appreciate. Raising awareness through photography helps to preserve these unique cultures and places before they are lost forever.

Employing a re-designed optical system incorporating Nano Crystal Coat, this lens inherits an ultra-fast f/1.4 maximum aperture and a rounded 9-blade diaphragm for stunning bokeh. In addition, the refined MF driving mechanism reduces focus time lag and enables smoother operation in M/A mode. Expect incredibly crisp yet natural image rendering for portraits, whether for studio work or other commercial shoots outdoors.

SWM N M/A IF

Lens construction: 10 elements in 9 groups
Minimum focus distance: 0.85 m/2.79 ft
Maximum reproduction ratio: 0.12x
Filter-attachment size: 77 mm
Accessories: Hood HB-55 / Case CL-1118



Fast aperture, medium-telephoto portrait lens for beautiful HD video

AF-S NIKKOR 85mm f/1.8G



Fixed focal length
AF-S NIKKOR 85mm f/1.8G © Ashraful Arefin

PHOTOGRAPHER: ASHRAFUL AREFIN

The AF-S NIKKOR 85mm f/1.8G has become my lens of choice for quite a time for its stellar optical quality and hardly ever leaves my camera body. I got this lens to try some street and travel shots, but never thought it would be such a great lens for my personal still-life works. The best thing I love about this lens is the amazing wide aperture which helps me create some beautiful dreamy backgrounds while maintaining crisp sharp focus on my subject.

A medium-telephoto portrait lens, the AF-S NIKKOR 85mm f/1.8G is suited to a wide range of shooting situations from stunning head and shoulder portraits, to weddings, concerts and more. The fast maximum aperture of f/1.8 performs brilliantly under challenging lighting conditions and delivers beautiful, natural background blur that brings out the best in any subject.

SWM M/A IF

Lens construction: 9 elements in 9 groups
Minimum focus distance: 0.8 m / 2.62 ft
Maximum reproduction ratio: 0.124x
Filter-attachment size: 67 mm
Accessories: Hood HB-62 / Case CL-1015



Fast, prime medium-telephoto lens delivering amazing bokeh

AF-S NIKKOR 105mm f/1.4E ED



AF-S NIKKOR 105mm f/1.4E ED © Supawat Denamporn

PHOTOGRAPHER: SUPAWAT DENAMPORN

I am particularly fond of shooting backlit photos — there is something about the dreamy lighting that exudes romance yet mystery. I like to get creative with lighting and often opt for less-than-ideal light situations where I can use an external flash. Memories from special moments such as weddings are worth more than anything. These are the little things I look and live to capture.

This fast, medium-telephoto lens provides a large and beautiful bokeh effect with smooth alteration from the focus plane, ensuring natural depth of subjects, via the embodiment of NIKKOR's unique design concept of "three-dimensional high fidelity". Superior optical performance provides high resolution even in the peripheral areas, sharp rendering of distant subjects even at the maximum aperture, and high reproduction capability of point light sources.

SWM N ED M/A IF E

Lens construction: 14 elements in 9 groups
Minimum focus distance: 1.0 m / 3.3 ft
Maximum reproduction ratio: 0.13x
Filter-attachment size: 82 mm
Accessories: Hood HB-79 / Case CL-1218



Prime telephoto lens employing a PF lens element
AF-S NIKKOR 300mm f/4E PF ED VR



Fixed focal length

AF-S NIKKOR 300mm f/4E PF ED VR © Emil Tse Photo taken at City of Dreams, The House of Dancing Water

PHOTOGRAPHER: EMIL TSE

I regard photography as both a powerful tool and medium to convey the interdependence of shared experiences that bond us all as global villagers. With my accurate and reliable Nikon equipment, I am able to craft images that present these remarkable moments while communicating my message through my work.

This telephoto lens employs a PF (Phase Fresnel) lens element, a first in the NIKKOR lineup, to realise an outstandingly compact and light body while effectively minimising chromatic aberration. High optical performance is also ensured with an ED glass element and Nano Crystal Coat. Vibration Reduction (VR) function provides an effect equivalent to a shutter speed 4.5 stops* faster in NORMAL mode. Ideal for capturing a wide range of scenes such as sports, wildlife and portraits.

* Based on CIPA Standard. This value is achieved when attached to an FX-format D-SLR camera.

VR	SWM	N	PF	ED
M/A	A/M	IF	E	

Lens construction: 16 elements in 10 groups
Minimum focus distance: 1.4 m/4.6 ft
Maximum reproduction ratio: 0.24x
Filter-attachment size: 77 mm
Accessories: Hood HB-73 / Case CL-M3 / Tripod Collar Ring RT-1 (optional)



Remarkably high-performance super-telephoto lens
AF-S NIKKOR 400mm f/2.8E FL ED VR



AF-S NIKKOR 400mm f/2.8E FL ED VR © Daryl Balfour

PHOTOGRAPHER: DARYL BALFOUR

I have been a professional wildlife photographer for almost 30 years. I bought my first Nikon camera in 1973, and from the Nikon F to the F5, along with many of the side-shoot bodies of those eras, I've used and paired my cameras with most of the NIKKOR telephoto lenses.

This new-generation super-telephoto lens provides outstanding optical performance with minimised chromatic aberration. The weight of approx. 3800 g is realised through the employment of fluorite lens elements for superior mobility. Vibration Reduction (VR) which provides an effect equivalent to a shutter speed 4.0 stops* faster adopts a new "SPORT" mode that is particularly effective when shooting sports. Other noticeable features include an electromagnetic diaphragm for stable exposure control even during continuous shooting, a highly reliable fluorine coat applied to the lens front, and a tripod mount ring incorporating bearings for smooth operation.

* Based on CIPA Standard. This value is achieved when attached to an FX-format D-SLR camera.

VR	SWM	N	FL	ED
M/A	A/M	IF	E	

Lens construction: 16 elements in 12 groups
Minimum focus distance: 2.6 m/8.5 ft
Maximum reproduction ratio: 0.17x
Filter-attachment size: 40.5 mm
Accessories: Hood HK-38 / Case CT-405



Perfect for super-telephoto shots

AF-S NIKKOR 500mm f/4E FL ED VR



Fixed focal length

AF-S NIKKOR 500mm f/4E FL ED VR © Craig Kolesky

VR SWM N FL ED
M/A A/M IF E

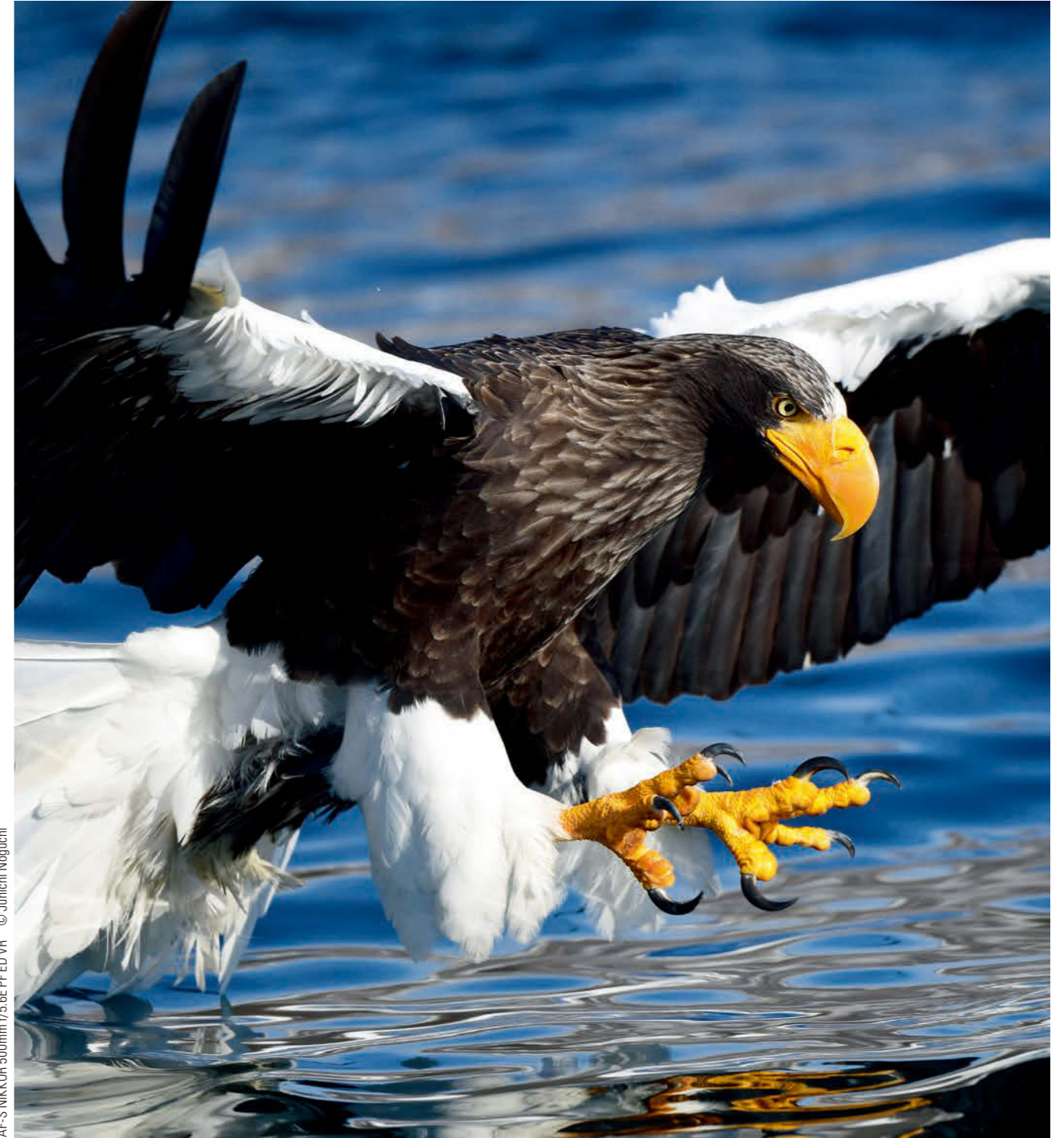
Lens construction: 16 elements in 12 groups
(Plus one meniscus protective glass element with fluorine coat)
Minimum focus distance: 3.6 m / 11.9 ft
Maximum reproduction ratio: 0.15x
Filter-attachment size: 40.5 mm
Accessories: Hood HK-34 / Case CT-505

The AF-S NIKKOR 500mm f/4E FL ED VR incorporates the latest NIKKOR technology such as two fluorite lens, three ED glass elements and Nano Crystal Coat. It also features an electromagnetic aperture mechanism that allows for stable exposure control, and a fluorine coat that effectively repels dust, water, grease and dirt.



Hand-held super-telephoto photography with superior optical performance

AF-S NIKKOR 500mm f/5.6E PF ED VR



AF-S NIKKOR 500mm f/5.6E PF ED VR © Junichi Naguchi

VR SWM N PF ED
M/A A/M IF E

Lens construction: 19 elements in 11 groups
Minimum focus distance: 3.0 m / 9.8 ft
Maximum reproduction ratio: 0.18x
Filter-attachment size: 95 mm
Accessories: Hood HB-84 / Case CL-M5

The AF-S NIKKOR 500mm f/5.6E PF ED VR is a high-performance, super-telephoto lens that supports 500 mm focal length. The adoption of a PF (Phase Fresnel) lens element has significantly reduced the size and weight of the lens, making hand-held super-telephoto photography easier and more enjoyable.



Super-telephoto lens with outstanding optical performance

AF-S NIKKOR 600mm f/4E FL ED VR



Fixed focal length

AF-S NIKKOR 600mm f/4E FL ED VR © Ole-Jørgen Ljødden

Employing two fluorite lens elements, this fast 600 mm super-telephoto lens realises superior optical performance in an approx. 3,810 g body. ED glass elements and Nano Crystal Coat also contribute to high-quality images with minimal chromatic aberration, ghosting and flare effect. The Vibration Reduction (VR) system which provides an effect equivalent to a shutter speed 4.0 stops* faster in NORMAL mode also offers SPORT mode. Other notable features include an electromagnetic diaphragm mechanism, fluorine coat applied to a meniscus protective glass at the lens front, and a tripod collar ring utilising bearings for smooth operation.

VR **SWM** **N** **FL** **ED**
M/A **A/M** **IF** **E**

Lens construction: 16 elements in 12 groups
(plus one meniscus protective glass element with fluorine coat)
Minimum focus distance: 4.4 m/14.4 ft
Maximum reproduction ratio: 0.14x
Filter-attachment size: 40.5 mm
Accessories: Hood HK-40 / Case CT-608

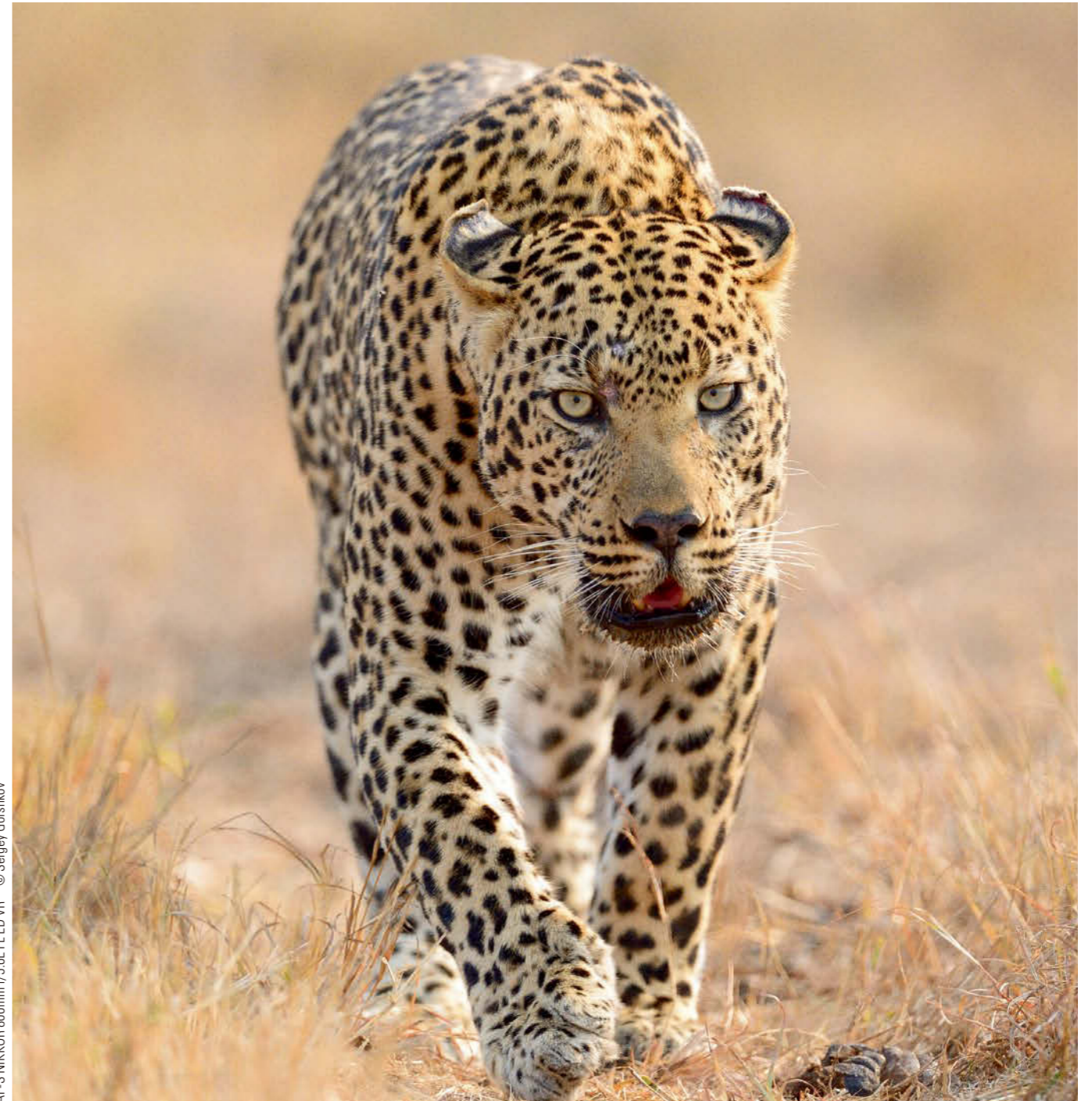
* Based on CIPA Standard. This value is achieved when attached to an FX-format D-SLR camera.



Overwhelming super-telephoto with fluorite lens elements

AF-S NIKKOR 800mm f/5.6E FL ED VR

AF-S TELECONVERTER TC800-1.25E ED



AF-S NIKKOR 800mm f/5.6E FL ED VR © Sergey Gorchikov

Super-telephoto shooting is reliably supported by an electromagnetic diaphragm mechanism and Vibration Reduction (VR) which provides an effect equivalent to a shutter speed 4.5 stops* faster (4.0 stops* with the AF-S TELECONVERTER TC800-1.25E ED). Thanks to the use of fluorite lens elements and magnesium alloy for its body, a light yet durable lens is realised.

VR **SWM** **N** **FL** **ED**
M/A **A/M** **IF** **E**

Lens construction: 20 elements in 13 groups
Minimum focus distance: 5.9 m/19.36 ft (AF); 5.8 m/19.03 ft (MF)
Maximum reproduction ratio: 0.15x (AF); 0.15x (MF)
Filter-attachment size: 52 mm
Accessories: Hood HK-38 / Case CT-801 / AF-S TELECONVERTER TC800-1.25E ED

AF-S TELECONVERTER TC800-1.25E ED*1
Lens construction: 5 elements in 3 groups **Weight:** 135 g/4.8 oz
Diameter x length*2: 62.5 x 16 mm/2.5 x 0.6 in.
*1 Focal length is extended by 1.25x.
*2 Distance from camera's lens-mount flange.

• Compatible AF teleconverters: [AF is possible when attached to f/8-compatible cameras] AF-S TELECONVERTER TC800-1.25E ED/AF-S TELECONVERTER TC-14E III, [MF only] AF-S TELECONVERTER TC-20E III/AF-S TELECONVERTER TC-17E II

[Note] Supplied AF-S TELECONVERTER TC800-1.25E ED is a dedicated teleconverter to the AF-S NIKKOR 800mm f/5.6E FL ED VR and cannot be attached to other lenses. It is not sold separately.



Wide fisheye lens for all photographers

AF-S Fisheye NIKKOR 8-15mm f/3.5-4.5E ED



AF-S Fisheye NIKKOR 8-15mm f/3.5-4.5E ED © Fabrice Wittner

Create dramatic shots with the two unique fisheye effects — the circular fisheye effect, that gives you 180° angle of view vertically and horizontally at the maximum wide-angle position with FX-format D-SLR, and the full-frame fisheye effect, that provides you with a diagonal angle of view of 180° when zoomed in close to 15 mm*1 with FX-format D-SLR and around the DX mark on the focal length scale*2 with DX-format*3 D-SLR.

*1 At exactly 15 mm, the angle of view is slightly smaller, at 175°.
*2 The mark on the focal length scale that enables diagonal fisheye shooting in DX format.
*3 Angle of view is 180° from wide-angle end to around the DX mark (approx. 11 mm on focal length scale), but it gradually becomes smaller as the focal length gets longer.

SWM N ED AS M/A IF E

Lens construction: 15 elements in 13 groups
Minimum focus distance: 0.16 m/0.5 ft
Maximum reproduction ratio: 0.34x
Accessories: Hood HB-80 / Case CL-1218



Fun and compact fisheye lens for DX-format cameras

AF DX Fisheye-Nikkor 10.5mm f/2.8G ED



AF DX Fisheye-Nikkor 10.5mm f/2.8G ED © Tim Andrew

DX

ED CRC

Lens construction: 10 elements in 7 groups
Minimum focus distance: 0.14 m/0.46 ft
Maximum reproduction ratio: 0.2x
Filter-attachment size: Rear-attachment type 27 mm
Accessories: Built-in hood / Case CL-0715

The ultra wide picture angle of 180° on the DX sensor is achieved by producing a smaller image circle (the size of the image that is projected by the lens on to the sensor) enabling a smaller lens diameter, lighter weight and optimal image quality from center to edge to corner on the image.



Compact and approachable DX micro with amazing clarity

AF-S DX Micro NIKKOR 40mm f/2.8G



AF-S DX Micro NIKKOR 40mm f/2.8G © Matt Smith

PHOTOGRAPHER: **MATT SMITH**

My passion lies with the treasures undiscovered in our oceans. I always aim to visually communicate to my audience the experience of being underwater, and the incredible interactions between myself and rarely seen creatures of our oceans in their natural habitat. People will protect what they know, and only know what they have been shown. I want to generate compassion in people of how wonderful our seas are, and how important it is to treat them with respect.

This remarkably light, compact and agile micro lens serves as an exceptional complement to DX-format D-SLR cameras. In addition to life-size (1x) close-up capability, the 40 mm focal length can make a wide variety of subject matter approachable, including portraits. An excellent Micro NIKKOR for any DX format photographer.

SWM M/A CRC

Lens construction: 9 elements in 7 groups
Minimum focus distance: 0.163 m/0.53 ft
Maximum reproduction ratio: 1.0x
Filter-attachment size: 52 mm
Accessories: Hood HB-61 / Case CL-0915

DX



Versatile standard macro lens with advanced technologies

AF-S Micro NIKKOR 60mm f/2.8G ED



AF-S Micro NIKKOR 60mm f/2.8G ED © Eunice Lim

PHOTOGRAPHER: **EUNICE LIM**

I approach my photography with a belief that beauty is all around us — one just has to pay attention to it. Shooting mostly still lifes and food, I challenge myself to think out of the box when framing my shots, and I have a penchant for shooting objects with a different perspective.

The AF-S Micro NIKKOR 60mm f/2.8G ED lens allows photographers to shoot 1:1 life-size close-ups without the need for additional accessories. To ensure superior picture quality at all subject distances from macro to infinity, a host of state-of-the-art, Nikon original optical features and technologies are incorporated.

SWM N ED AS M/A IF

Lens construction: 12 elements in 9 groups
Minimum focus distance: 0.185 m/0.6 ft
Maximum reproduction ratio: 1.0x
Filter-attachment size: 62 mm
Accessories: Hood HB-42 / Case CL-1018



Excellently balanced micro lens with VR

AF-S VR Micro-Nikkor 105mm f/2.8G IF-ED



AF-S VR Micro-Nikkor 105mm f/2.8G IF-ED © Aaron Wong

PHOTOGRAPHER: AARON WONG

It can be hard to prepare for a photography dive, apart from picking the right lens. I never know what I will stumble upon, hence I like to have a good idea of how I plan to photograph different fishes before the dive, so that I am immediately ready to capture the image when the chance arises. Through my work, I hope to share with the world the beauty of life that exists beneath the waves and help others to understand the importance of protecting our oceans.

This medium-telephoto micro lens has Vibration Reduction (VR) providing an effect equivalent to a shutter speed 3.0 stops* faster for comfortable handheld macro shooting. The lens delivers crisp yet natural images in any genre of photography. The longer focal length gives it a great working distance when shooting close-ups of flowers, insects and other small wildlife. It also takes fantastic portraits. Nano Crystal Coat effectively reduces ghosting and flare effects.

* Based on CIPA Standard. The value is achieved when attached to an FX-format D-SLR camera.

VR SWM N ED M/A IF

Lens construction: 14 elements in 12 groups
Minimum focus distance: 0.314 m/1.0 ft
Maximum reproduction ratio: 1.0x
Filter-attachment size: 62 mm
Accessories: Hood HB-38 / Case CL-1020



High-performance, ultra-wide-angle lens with perspective control

PC NIKKOR 19mm f/4E ED



PC NIKKOR 19mm f/4E ED © Adrien Barakat

The 19 mm focal length of this lens provides an angle of view that is familiar to photographers of architecture and interiors. The mechanical structure of the shift mechanism allows smooth and precise adjustment of the shift position and eliminates the need for lock operation to fix the shift position, ensuring comfortable shift operation.

N ED AS RF E

Lens construction: 17 elements in 13 groups
Minimum focus distance: 0.25 m/0.9 ft
Maximum reproduction ratio: 0.18x
Accessories: Case CL-1120

SPECIFICATIONS

Lens mount	Lens name	Lens construction [groups/elements]	Angle of view with FX-format cameras	Angle of view with DX-format cameras	Focusing system*1	Vibration Reduction (VR)			Number of diaphragm blades	Minimum f-stop	Minimum focus distance*3 [m/ft]	Maximum reproduction ratio[x]	Weight [g]	Diameter × length*4 [mm/in.]	Filter-attachment size [mm]
						Effect in stops*2	VR mode	Tripod vibration reduction							
Z mount	NIKKOR Z 20mm f/1.8 S	11/14	94°	70°	Multi-focusing system, IF	–	–	–	9	16	0.2/0.66	0.19	505	84.5×108.5/3.4×4.3	77
	NIKKOR Z 24mm f/1.8 S	10/12	84°	61°	Multi-focusing system, RF	–	–	–	9	16	0.25/0.82	0.15	450	78×96.5/3.1×3.8	72
	NIKKOR Z 28mm f/2.8	8/9	75°	53°	Multi-focusing system, IF	–	–	–	7	16	0.19/0.63	0.2	155	70×43/2.8×1.7	52
	NIKKOR Z 28mm f/2.8 (SE)	8/9	75°	53°	Multi-focusing system, IF	–	–	–	7	16	0.19/0.63	0.2	160	71.5×43/2.9×1.7	52
	NIKKOR Z 35mm f/1.8 S	9/11	63°	44°	Multi-focusing system, RF	–	–	–	9	16	0.25/0.82	0.19	370	73×86/2.9×3.4	62
	NIKKOR Z 40mm f/2	4/6	57°	38°50'	IF	–	–	–	9	16	0.29/0.96	0.17	170	70×45.5/2.8×1.8	52
	NIKKOR Z 50mm f/1.2 S	15/17	47°	31°30'	Multi-focusing system, IF	–	–	–	9	16	0.45/1.48	0.15	1090	89.5×150/3.6×6	82
	NIKKOR Z 50mm f/1.8 S	9/12	47°	31°30'	IF	–	–	–	9	16	0.4/1.32	0.15	415	76×86.5/3.0×3.4	62
	NIKKOR Z 58mm f/0.95 S Noct	10/17	40°50'	27°20'	Front focusing	–	–	–	11	16	0.5/1.64	0.19	2000	102×153/4.1×6.1	82
	NIKKOR Z 85mm f/1.8 S	8/12	28°30'	18°50'	Multi-focusing system, IF	–	–	–	9	16	0.8/2.62	0.12	470	75×99/3.0×3.9	67
	NIKKOR Z 14-24mm f/2.8 S	11/16	114°-84°	90°-61°	IF	–	–	–	9	22	0.28/0.92	0.13	650	88.5×124.5/3.5×5	112
	NIKKOR Z 14-30mm f/4 S	12/14	114°-72°	90°-50°	IF	–	–	–	7	22	0.28/0.92	0.16	485	89×85/3.5×3.3	82
	NIKKOR Z 24-70mm f/4 S	11/14	84°-34°20'	61°-22°50'	IF	–	–	–	7	22	0.3/0.99	0.3	500	77.5×88.5/3.1×3.5	72
	NIKKOR Z 24-70mm f/2.8 S	15/17	84°-34°20'	61°-22°50'	Multi-focusing system, IF	–	–	–	9	22	0.38/1.25	0.22	805	89×126/3.5×5.0	82
	NIKKOR Z 24-120mm f/4 S	13/16	84°-20°20'	61°-13°20'	Multi-focusing system, IF	–	–	–	9	22	0.35/1.15	0.39	630	84×118/3.4×4.7	77
	NIKKOR Z 70-200mm f/2.8 VR S	18/21	34°20'-12°20'	22°50'-8°	Multi-focusing system, IF	5.5	Normal/Sport	√	9	22	0.5/1.64	0.2	1360	89×220/3.6×8.7	77
	NIKKOR Z 100-400mm f/4.5-5.6 VR S	20/25	24°20'-6°10'	16°-4°	Multi-focusing system, IF	5.5	Normal/Sport	√	9	32-40	0.75/2.46	0.38	1435	98×222/3.9×8.8	77
	NIKKOR Z 24-50mm f/4-6.3	10/11	84°-47°	61°-31°30'	IF	–	–	–	7	22-36	0.35/1.15	0.17	195	73.5×51/2.9×2.1	52
	NIKKOR Z 24-200mm f/4-6.3 VR	15/19	84°-12°20'	61°-8°	IF	5.0	Normal/Sport	√	7	22-36	0.5/1.64	0.28	570	76.5×114/3.1×4.5	67
	NIKKOR Z 28-75mm f/2.8	12/15	75°-32°10'	53°-21°20'	IF	–	–	–	9	22	0.19/0.63	0.34	565	75×120.5/3×4.8	67
	NIKKOR Z DX 18-140mm f/3.5-6.3 VR	13/17	–	76°-11°30'	IF	5.0	Normal/Sport	√	7	22-40	0.2/0.66	0.33	315	73×90/2.9×3.6	62
	NIKKOR Z DX 16-50mm f/3.5-6.3 VR	7/9	–	83°-31°30'	IF	4.5	Normal/Sport	√	7	22-40	0.2/0.66	0.2	135	70×32/2.8×1.3	46
	NIKKOR Z DX 50-250mm f/4.5-6.3 VR	12/16	–	31°30'-6°30'	IF	5.0	Normal/Sport	√	7	22-32	0.5/1.64	0.23	405	74×110/3×4.4	62
	NIKKOR Z MC 50mm f/2.8	7/10	47°	31°30'	Front focusing	–	–	–	9	22-32	0.16/0.53	1	260	74.5×66/3×2.6	46
	NIKKOR Z MC 105mm f/2.8 VR S	11/16	23°10'	15°20'	Multi-focusing system, IF	4.5	Normal/Sport	–	9	32	0.29/0.96	1	630	85×140/3.4×5.6	62
	AF-P DX NIKKOR 10-20mm f/4.5-5.6G VR	11/14	–	109°-70°	IF	3.5	Normal	–	7	22-29	0.22/0.8	0.17	230	77×73/3.0×2.9	72
	AF-S DX NIKKOR 10-24mm f/3.5-4.5G ED	9/14	–	109°-61°	IF	–	–	–	7	22-29	0.24/0.8 (0.22/0.7)*5	0.2	460	82.5×87/3.2×3.4	77
	AF-S NIKKOR 14-24mm f/2.8G ED	11/14	114°-84°	90°-61°	IF	–	–	–	9	22	0.28/0.92*6	0.14	1000	98×131.5/3.9×5.2	–
	AF-S NIKKOR 16-35mm f/4G ED VR	12/17	107°-63°	83°-44°	IF	2.5	Normal	–	9	22	0.28/0.9*7	0.25	680	82.5×125/3.2×4.9	77
	AF-S NIKKOR 18-35mm f/3.5-4.5G ED	8/12	100°-63°	76°-44°	IF	–	–	–	7	22-29	0.28/0.92	0.2	385	83×95/3.3×3.7	77
	AF-S DX NIKKOR 16-80mm f/2.8-4E ED VR	13/17	–	83°-20°	IF	4.0	Normal/Active	√	7	22-32	0.35/1.15	0.22	480	80×85.5/3.1×3.4	72
	AF-S DX NIKKOR 18-300mm f/3.5-6.3G ED VR	12/16	–	76°-5°20'	IF	4.0	Normal	–	7	22-40	0.48/1.6	0.29	550	78.5×99/3.1×3.9	67
	AF-S NIKKOR 24-70mm f/2.8E ED VR	16/20	84°-34°20'	61°-22°50'	IF	4.0	Normal/Active	√	9	22	0.38/1.25*8 (0.41/1.35)*9	0.28	1070	88×154.5/3.5×6.1	82
AF-S NIKKOR 24-120mm f/4G ED VR	13/17	84°-20°20'	61°-13°20'	IF	3.5	Normal/Active	–	9	22	0.45/1.5	0.24	710	84×103.5/3.3×4.1	77	
AF-S NIKKOR 28-300mm f/3.5-5.6G ED VR	14/19	75°-8°10'	53°-5°20'	IF	3.5	Normal/Active	–	9	22-38	0.5/1.6	0.32	800	83×114.5/3.3×4.5	77	
AF-S NIKKOR 120-300mm f/2.8E FL ED SR VR	19/25	20°20'-8°10'	13°20'-5°20'	IF	4.0	Normal/Sport	√	9	22	2.0/6.6	0.16	3250	128×303.5/5.1×12	112	
AF-S NIKKOR 70-200mm f/2.8E FL ED VR*10	18/22	34°20'-12°20'	22°50'-8°00'	IF	4.0	Normal/Active	√	9	22	1.1/3.61	0.21	1430	88.5×202.5/3.5×8.0	77	
AF-S NIKKOR 70-200mm f/4G ED VR	14/20	34°20'-12°20'	22°50'-8°00'	IF	4.0	Normal/Active	–	9	32	1.0/3.28	0.27	850	78×178.5/3.1×7.0	67	
AF-S NIKKOR 80-400mm f/4.5-5.6G ED VR*10	12/20	30°10'-6°10'	20°-4°	IF	4.0	Normal/Active	√	9	32-40	1.75/5.74 (1.5/4.92)*5	0.17 (0.19)*5	1570 (1480)*11	95.5×203/3.8×8.0	77	
AF-S NIKKOR 200-500mm f/5.6E ED VR*10	12/19	12°20'-5°00'	8°-3°10'	IF	4.5	Normal/Sport	√	9	32	2.2/7.22	0.22	2300 (2090)*11	108×267.5/4.3×10.5	95	
AF-P DX NIKKOR 70-300mm f/4.5-6.3G ED VR	10/14	–	22°50'-5°20'	IF	4.0	Normal	√	7	22-32	1.1/3.7	0.22	415	72×125/2.8×4.9	58	
AF-S NIKKOR 180-400mm f/4E TC1.4 FL ED VR	19/27	13°40'-6°10' (9°50'-4°30')*12	9°-4° (6°20'-2°50')*12	IF	4.0	Normal/Sport	√	9	32 (45)*12	2.0/6.6	0.25 (at 400 mm), 0.36 (at 560 mm)*12	3500	128.0×362.5/5.0×14.3	40.5	
AF-S NIKKOR 20mm f/1.8G ED	11/13	90°	74°	RF	–	–	–	7	16	0.2/0.66	0.23	355	82.5×80.5/3.2×3.2	77	
AF-S NIKKOR 24mm f/1.4G ED	10/12	84°	61°	RF	–	–	–	9	16	0.25/0.82	0.18	620	83×88.5/3.3×3.5	77	
AF-S NIKKOR 24mm f/1.8G ED	9/12	84°	61°	RF	–	–	–	7	16	0.23/0.75	0.2	355	77.5×83/3.1×3.3	72	
AF-S NIKKOR 28mm f/1.4E ED	11/14	75°	53°	RF	–	–	–	9	16	0.28/0.92	0.17	645	83×100.5/3.3×4.0	77	
AF-S NIKKOR 28mm f/1.8G	9/11	75°	53°	RF	–	–	–	7	16	0.25/0.82	0.22	330	73×80.5/2.9×3.2	67	
AF-S NIKKOR 35mm f/1.4G	7/10	63°	44°	RF	–	–	–	9	16	0.3/0.98	0.2	600	83×89.5/3.3×3.5	67	
AF-S NIKKOR 35mm f/1.8G ED	8/11	63°	44°	RF	–	–	–	7	16	0.25/0.82	0.24	305	72×71.5/2.8×2.8	58	
AF-S DX NIKKOR 35mm f/1.8G	6/8	–	44°	RF	–	–	–	7	22	0.3/0.98	0.16	200	70×52.5/2.8×2.1	52	
AF-S NIKKOR 50mm f/1.4G	7/8	46°	31°30'	–	–	–	–	9	16	0.45/1.5	0.15	280	73.5×54/2.9×2.1	58	
AF-S NIKKOR 50mm f/1.8G	6/7	47°	31°30'	–	–	–	–	7	16	0.45/1.48	0.15	185	72×52.5/2.8×2.1	58	
AF-S NIKKOR 58mm f/1.4G	6/9	40°50'	27°20'	–	–	–	–	9	16	0.58/1.9	0.13	385	85×70/3.3×2.8	72	
AF-S NIKKOR 85mm f/1.4G	9/10	28°30'	18°50'	IF	–	–	–	9	16	0.85/2.79	0.12	595	86.5×84/3.4×3.3	77	
AF-S NIKKOR 85mm f/1.8G	9/9	28°30'	18°50'	IF	–	–	–	7	16	0.8/2.62	0.124	350	80×73/3.1×2.9	67	
AF-S NIKKOR 105mm f/1.4E ED	9/14	23°10'	15°20'	IF	–	–	–	9	16	1.0/3.3	0.13	985	94.5×106/3.7×4.2	82	
AF-S NIKKOR 300mm f/4E PF ED VR*10	10/16	8°10'	5°20'	IF	4.5	Normal/Sport	√	9	32	1.4/4.6	0.24	755	89×147.5/3.5×5.8	77	
AF-S NIKKOR 400mm f/2.8E FL ED VR*10	12/16	6°10'	4°	IF	4.0	Normal/Sport	√	9	22	2.6/8.5	0.17	3800	159.5×358/6.3×14.1	40.5	
AF-S NIKKOR 500mm f/4E FL ED VR*10	12/16	5°00'	3°10'	IF	4.0	Normal/Sport	√	9	22	3.6/11.9	0.15	3090	140×387/5.5×15.2	40.5	
AF-S NIKKOR 500mm f/5.6E PF ED VR	11/19	5°00'	3°10'	IF	4.0	Normal/Sport	√	9	32	3.0/9.8	0.18	1460	106×237/4.2×9.3	95	
AF-S NIKKOR 600mm f/4E FL ED VR*10	12/16	4°10'	2°40'	IF	4.0	Normal/Sport	√	9	22	4.4/14.4	0.14	3810	166×432/6.5×17.0	40.5	
AF-S NIKKOR 800mm f/5.6E FL ED VR*10	13/20	3°10'	2°	IF	4.5	Normal/Active	√	9	32	5.9/19.36 (5.8/19.03)*5	0.15 (0.15)*5	4590	160×461/6.3×18.1	52	
AF-S Fisheye NIKKOR 8-15mm f/3.5-4.5E ED	13/15	180°00'-175°00'	180°00'-110°00'	IF	–	–	–	7	22-29	0.16/0.5	0.34	485	77.5×83/3.1×3.3	–	
AF DX Fisheye-Nikkor 10.5mm f/2.8G ED*13	7/10	–	180°	–	–	–	–	7	22	0.14/0.46	0.20	305	63×62.5/2.5×2.5	Rear-attachment type 27 mm	
AF-S DX Micro NIKKOR 40mm f/2.8G*13	7/9	–	38°50'	–	–	–	–	7	22	0.163/0.53	1.0	235	68.5×64.5/2.7×2.5	52	
AF-S Micro NIKKOR 60mm f/2.8G ED	9/12	39°40'	26°30'	IF	–	–	–	9	32	0.185/0.6	1.0	425	73×89/2.9×3.5	62	
AF-S VR Micro-Nikkor 105mm f/2.8G IF-ED	12/14	23°20'	15°20'	IF	3.0	Normal	–	9	32	0.314/1	1.0	750	83×116/3.3×4.6	62	
PC NIKKOR 19mm f/4E ED	13/17	97°	73°	RF	–	–	–	9	32	0.25/0.9	0.18	885	89×124/3.5×4.9	–	

*1 With the IF (Internal Focusing) system, the shorter the shooting distance, the shorter the focal length becomes because of its optical characteristics.

*2 Based on CIPA Standard. This value is achieved when: DX-format lenses are attached to a DX-format camera, FX-format compatible lenses are attached to an FX-format camera, and zoom lenses are set at the maximum telephoto position.

*3 Minimum focus distance is the distance from a camera's focal plane mark to the subject.

*4 Distance from camera lens mount flange.

*5 Number in () is for MF.

*6 When in between 18-24 mm.

*7 When in between 20-28 mm.

*8 When in between 35-50 mm.

*9 When in 24, 28, 70 mm.

*10 Tripod mounting collar is provided.

*11 Number in () is the weight without tripod mounting collar.

*12 With built-in teleconverter.

*13 Close-Range Correction (CRC) system.



Specifications and equipment are subject to change without any notice or obligation on the part of the manufacturer. January 2022 © 2022 Nikon Corporation




WARNING


**TO ENSURE CORRECT USAGE, READ MANUALS CAREFULLY BEFORE USING YOUR EQUIPMENT.
SOME DOCUMENTS CAN BE DOWNLOADED FROM downloadcenter.nikonimglib.com.**



Nikon Singapore Pte. Ltd. 18 Tai Seng Street, #04-08, 18 Tai Seng, Singapore 539775 www.nikon.com.sg
Nikon Hong Kong Ltd. Unit 2001, Level 20, Tower II, Grand Century Place, 193 Prince Edward Road West, Mongkok, Kowloon, Hong Kong www.nikon.com.hk
Nikon Australia Pty Ltd. Suite 501, Level 5, 5 Rider Boulevard, Rhodes, NSW 2138, Australia www.nikon.com.au
Nikon India Private Limited Plot No. 71, Sector 32, Institutional Area, Gurgaon 122001, Haryana, India (CIN-U74999HR2007FTC036820) www.nikon.co.in
Nikon Sales (Thailand) Co., Ltd. 1 Empire Tower, 45th Floor, River Wing East, South Sathorn Rd, Yannawa, Sathorn, Bangkok 10120, Thailand www.nikon.co.th
Nikon Middle East FZE Level 14, Jafza Views 19, P.O. Box 261908, Dubai, UAE www.nikon-me.com
NIKON CORPORATION Shinagawa Intercity Tower C, 2-15-3, Konan, Minato-ku, Tokyo 108-6290, Japan www.nikon.com



 @nikonasia

 @nikonasia