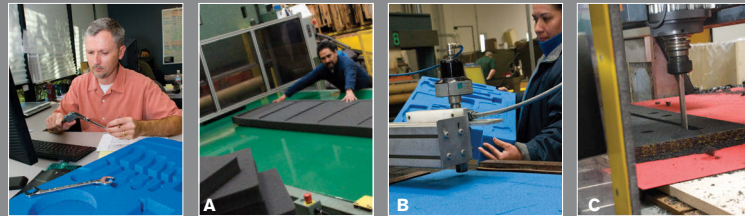


**> CUSTOM TOOL CONTROL**

Need to keep track of your tools? Foam tool organizers will make your life easier. Color contrast design tells you in a quick glance if any tools are missing. Eliminate FOD (Foreign Object Damage) caused by tools left in aircraft engines or other equipment. Available as single or multi-layer foam sets with compartments.



Engineers plan your foam layout for the perfect fit. Your layout is then transferred to your choice of foam to be cut using either (A) Die Cut Technology, (B) Water Jet Technology or (C) CNC Router Technology.

Call Pelican for information on custom solutions for the 0450 Mobile Tool Chest.

**> 0450 MOBILE TOOL CHEST SPECIFICATIONS**

INTERIOR DIMENSIONS (L X W X D)	EXTERIOR DIMENSIONS (L X W X D)
20.56" x 10.97" x 12.65" (52.2 x 27.9 x 32.1 cm)	23.95" x 14.75" x 17.95" (60.8 x 37.5 x 45.6 cm)
WEIGHT WITHOUT DRAWERS	WEIGHT WITH DRAWERS
33 lbs. (14.97 kg)	41.5 lbs. (18.82 kg)
COLOR	CERTIFICATES
■	· MIL-STD-810F

**PELICAN LIMITED LIFETIME GUARANTEE OF EXCELLENCE**

Pelican Products, Inc. guarantees its products for a lifetime against breakage or defects in workmanship. Pelican™ injection molded cases are guaranteed to be watertight to a depth of 3.3 feet (1 meter) for 30 minutes (IP 67) if properly closed with undamaged o-ring in place unless otherwise stated. To the extent permitted by law, Pelican's liability is limited to the case and not its contents or foam. All warranty claims of any nature are barred if the container has been altered, damaged or in any way physically changed, or subjected to abuse, misuse, negligence or accident. In Australia: See <http://www.pelican.com/warranty>. For complete warranty details, see <http://www.pelican.com/warranty>.

Lifetime Guarantee does not cover Roto Molded cases, AALG products or fabric portion of backpacks.

**U.S.A.**

**CALIFORNIA**

23215 Early Avenue  
Torrance, CA 90505  
Tel: 310.326.4700  
800.473.5422  
Fax: 310.326.3311  
[www.pelican.com](http://www.pelican.com)

**MASSACHUSETTS**

147 North Main Street  
South Deerfield, MA 01373  
Tel: 800.542.7344  
Fax: 413.665.8330  
[www.pelican.com](http://www.pelican.com)

**INTERNATIONAL**

**CANADA**

Pelican Products ULC  
10221-184th Street  
Edmonton, Alberta T5S 2J4  
Toll Free: 866-273-5422  
Tel: +780 481 6076  
Fax: +780 481 9586  
Email: [sales@pelican.ca](mailto:sales@pelican.ca)

**EUROPE, MIDDLE EAST & AFRICA**

Peli Products, S.L.U.  
c/ Provença, 388, Planta 7  
08025 · Barcelona, Spain  
Tel: +34 934 674 999  
Fax: +34 934 877 393  
Email: [info@peli.com](mailto:info@peli.com)

**JAPAN**

Pelican Products K.K.  
Nisso 22 Bldg 9F  
1-11-10 Azabu Dai  
Minato ward Tokyo  
106-0041  
Japan  
Tel: +81 33 585 9100  
Fax: +81 33 585 9109  
E-mail: [info@pelicanproducts.jp](mailto:info@pelicanproducts.jp)

**AUSTRALIA**

Pelican Products Australia  
Suite 2.33 West Wing, Platinum  
Building  
4 Ilya Av, Erina NSW 2250  
Tel: +612 4367 7022  
Fax: +612 4367 7066  
Email: [infoAustralia@pelican.com](mailto:infoAustralia@pelican.com)

**CHINA**

Pelican Products China  
Representative Office  
Pine City Building,  
Room 1026  
777 Zhaojiabang Road  
Shanghai, China 200032  
Toll Free: 800-820-3082  
Tel: +86 21 64189685  
Fax: +86 21 64189679  
E-mail: [jlj@pelican.com](mailto:jlj@pelican.com)

**LATIN AMERICA**

23215 Early Avenue  
Torrance, California 90505  
USA  
Tel: +1 310-326-4700 x 1462  
Fax: +1 310-325-5740  
Email: [latam@pelican.com](mailto:latam@pelican.com)

**KOREA**

Pelican Products Korea Ltd  
#2616 Hyundai 41 Tower,  
917-9, Mok-dong, Yangchon-gu,  
Seoul, Korea  
Tel: +82 2 6092 4700  
Fax: +82 2 6739 4700  
Email: [korea@pelican.com](mailto:korea@pelican.com)

**INDIA and SOUTH ASIA**

(Bangladesh, Bhutan, Maldives, Nepal, Sri Lanka)  
Pelican Products and Services India Pvt. Ltd  
Level "4", Augusta Point,  
Sector-53, Golf Course Road,  
Gurgaon 122002 Haryana, India  
Tel: +91 124 4354148  
Fax: +91 124 4354001  
Email: [india@pelican.com](mailto:india@pelican.com)

**SE ASIA and rest of ASIA**

(Hong Kong, Macau, Taiwan, Pakistan)  
Pelican Products Singapore Pte Ltd  
30 Merchant Road  
#02-08 Riverside Point  
Singapore 058282  
Tel: +65 64385418  
Email: [seasia@pelican.com](mailto:seasia@pelican.com)



**> THE 0450 MOBILE TOOL CHEST**



# > 0450 MOBILE TOOL CHEST

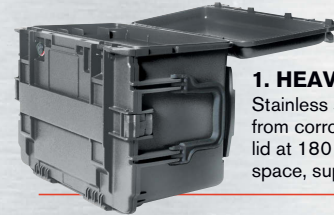
The U.S. Army tasked Pelican with building a mobile tool chest to house tools for its maintenance engineers. Rapid deployment to harsh environments is common; arriving with your tools intact and fully functional is mission critical.

Over a two year period of intensive design, research and

testing, Pelican Products built the world's toughest mobile tool chest for use by the U.S. Armed Services. Over 70 tests were required, including water submersion, extreme temperature tests and drop tests from five feet fully loaded. The 0450 passed all of them.

The 0450 Mobile Tool Chest: now ready for civilian use.

Every 0450 Mobile Tool Chest is backed by our **PELICAN LEGENDARY LIFETIME GUARANTEE OF EXCELLENCE.**



## 1. HEAVY DUTY BUTTRESS HINGES

Stainless steel hinge pins provide extra protection from corrosion. Raised ribs are designed to stop the lid at 180 degrees when opened to serve as a work space, supporting up to 50 lbs.

## 2. AUTO PRESSURE EQ VALVES

The 0450 has two built-in Automatic Pressure Equalization Valves: one for the top lid and the second for the main compartment. They make opening the case easier after altitude changes by balancing the interior pressure with the ambient pressure.



## 3. TWO WAY HANDLES

The 0450 case can be lifted from the tool chest position or the transport position.



## 4. STABLE, WIDE TRACK MOBILITY

The 0450 has 2" polyurethane wheels for optimum load distribution over soft terrain. By locating them on the back of the chest, they offer a wide, stable track. This also leaves the front of the chest clear of wheel obstructions, creating more usable drawer space.



## 5. REMOVABLE DRAWERS

The 0450 Mobile Tool Chest is available with removable shallow and deep drawers constructed of the same indestructible material as the case.



## 6. HYBRID DOUBLE THROW BUTTERFLY LATCHES

The 0450 incorporates the same robust design of Pelican's patented Double-Throw Latch but has been upgraded with a metal butterfly compression latch.



## 7. GRADUATED DEFLECTOR RIBS

Deflector ribs protect the hinges and latches from shipping damage by diverting the energy away from the case. They are rounded off to make rolling the 0450 onto its back easy when it's ready for transport.



## 8. SECURE STACK DESIGN

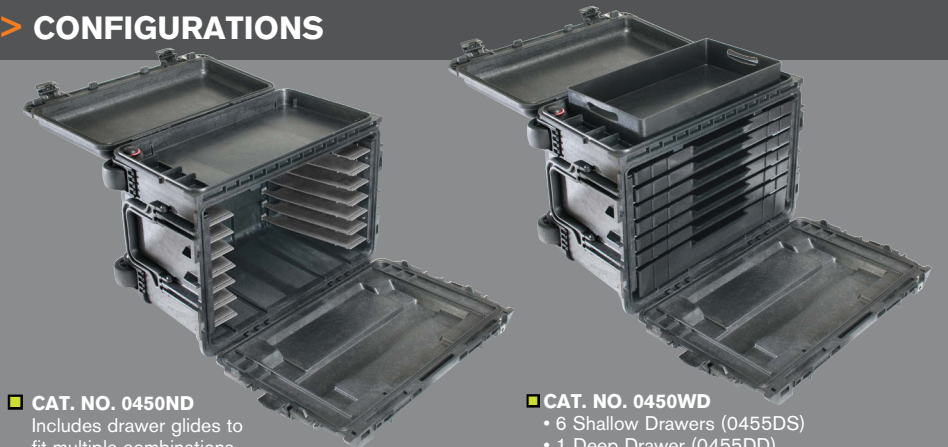
Extra deep pockets mate with the foot blocks on the bottom of the 0450 Mobile Tool Chest. This "Block-In-Pocket" design locks the cases together to prevent lateral movement.



## 9. FIELD REPLACEABLE WHEELS

Using simple fasteners, wheels can be replaced in the field. This also assures easy cleaning should debris become lodged within the parts.

## > CONFIGURATIONS



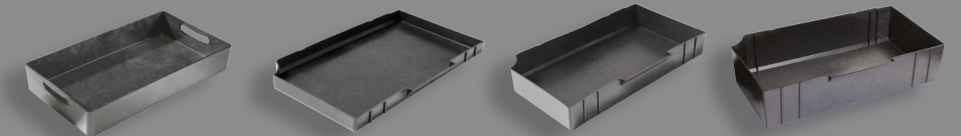
### ■ CAT. NO. 0450ND

Includes drawer glides to fit multiple combinations of deep and shallow drawers.

### ■ CAT. NO. 0450WD

- 6 Shallow Drawers (0455DS)
- 1 Deep Drawer (0455DD)
- 1 Top Tray (0455TT)

Drawers can also be purchased separately:



### ■ CAT. NO. 0455TT

Top Tray  
Size LxWxD:  
19.5" x 10" x 2.73"  
(49.5 x 25.4 x 6.9 cm)

### ■ CAT. NO. 0455DS

Shallow Drawer  
Size LxWxD:  
19.5" x 10" x 1.19"  
(49.5 x 25.4 x 3.0 cm)

### ■ CAT. NO. 0455DD

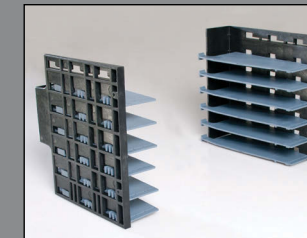
Deep Drawer  
Size LxWxD:  
19.5" x 10" x 2.78"  
(49.5 x 25.4 x 7.1 cm)

### ■ CAT. NO. 0455DE

4" Drawer  
Size LxWxD:  
19.5" x 10" x 4.37"  
(49.5 x 25.4 x 11.1 cm)

## > DRAWER ASSEMBLY: CUSTOMIZE YOUR 0450

The modular design of the 0450 Mobile Tool Chest allows you to adjust the number and position of glides to accommodate a multitude of drawer configurations.



Adjustable glides allow for multiple drawer configurations.



Choose shallow drawers, deep drawers or mix and match.

## > TOOL CONTROL: TOOL PALLET SOLUTION

Pelican's versatile nylon elastic strap system fits any tool and keeps it firmly in place during transport. Tool pallets are available in vertical or horizontal configurations.



■ CAT. NO. 0457  
Horizontal tool pallet



■ CAT. NO. 0456  
Vertical tool pallet

## CUSTOM FOAM SOLUTION

Secure and protect your valuables with a customized foam solution (see back panel for additional foam solutions).

